



Benham & Reeves

**Rathbone Street, Canning Town, E16**

£438 per week, £1,900 per month + fees

 1 Bedroom    1 Bathroom    Furnished

High specification one bedroom apartment with private patio situated in a significant and exciting development in Canning Town, an exciting place to call home in East London. The property is located moments from Canning Town Station which has direct trains to Canary Wharf (Jubilee Line). The property is ideally suited to professionals working in Canary Wharf & The City

Please [click here](#) for full detail

## Property features

**One Double Bedroom | One Bathroom | Open Planned Living Space | Furnished | Fitted Kitchen | EPC-B | Excellent Storage Space | Private Patio area | Ideal for professionals | Nearby Canning Town Station**

For more information about this property, please call our Canary Wharf branch on

**020 8036 3200**

Redress & Client Money Protection :

Benham and Reeves are members of The Property Ombudsman redress scheme and have Client Money protection with ARLA Propertymark. You can find more information on our website at <https://www.benhams.com/membership/>



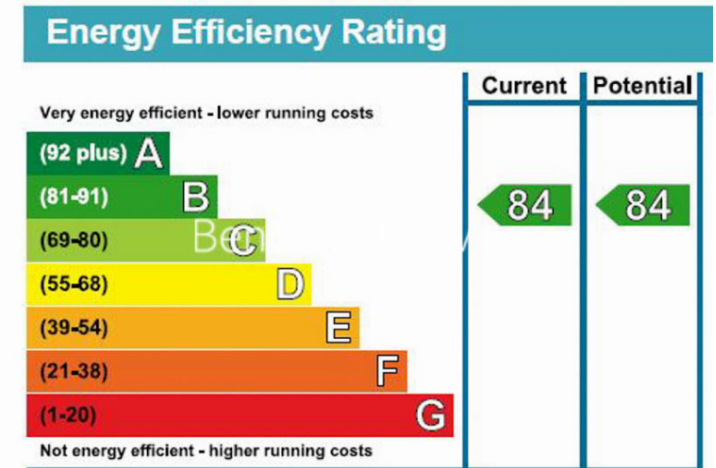
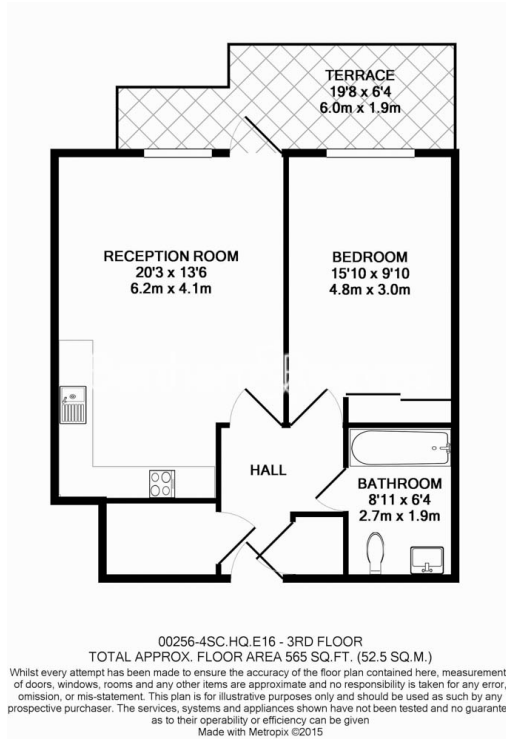
Benham & Reeves



# Rathbone Street, Canning Town, E16

£438 per week, £1,900 per month + fees

www.benhams.com



## London branches open six days a week Mon - Sat

Canary Wharf | City | Colindale | Dartmouth Park | Ealing | Fulham  
Hammersmith | Hampstead | Highgate | Hyde Park | Kensington | Kew  
Knightsbridge | Nine Elms | Shoreditch | Southall | Surrey Quays  
Wapping | Wembley | White City | Woolwich

## International offices

China | Hong Kong SAR | India | Indonesia | Qatar | Malaysia | Middle East | Pakistan  
Singapore | South Africa | Thailand | Turkey

