



Benham & Reeves

John Cabot House, Canary Wharf, E16

£508 per week, £2,201 per month + fees

 1 Bedroom  1 Bathroom  Furnished

A contemporary apartment located next Pontoon Dock DLR station, in a new riverside development. Conveniently located a short walk from Pontoon Dock DLR station.

Please [click here](#) for full detail

Property features

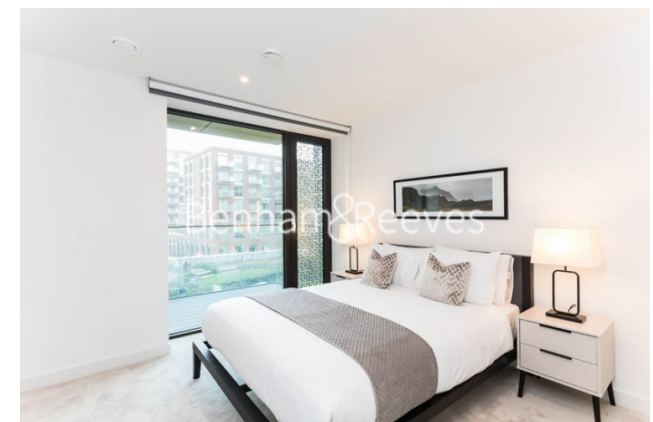
Double bedroom | Large open-plan reception | Modern furniture | Fitted Kitchen, including dishwasher | Family-size bathroom | EPC-B | Balcony | 24 Hour Concierge | Pontoon Dock DLR Station

For more information about this property, please call our Canary Wharf branch on

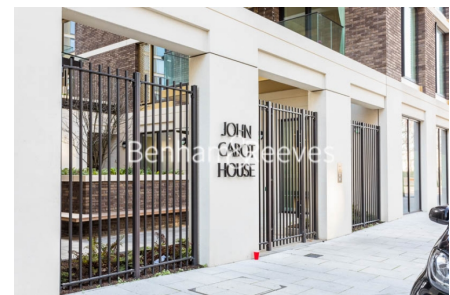
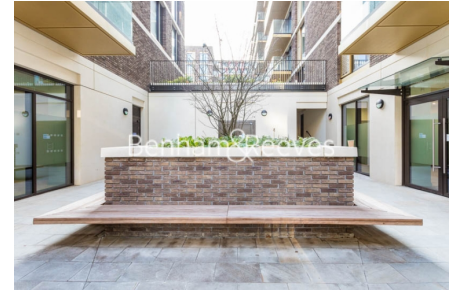
020 8036 3200

Redress & Client Money Protection :

Benham and Reeves are members of The Property Ombudsman redress scheme and have Client Money protection with ARLA Propertymark. You can find more information on our website at <https://www.benhams.com/membership/>



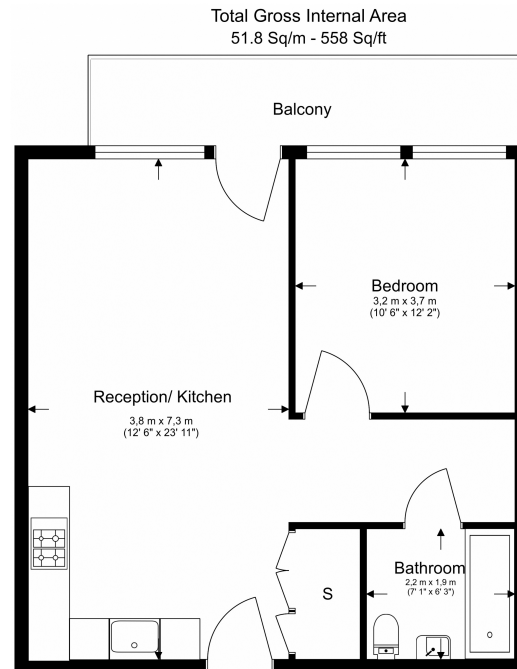
Benham & Reeves



John Cabot House, Canary Wharf, E16

£508 per week, £2,201 per month + fees

www.benhams.com



Floor Plan measurements are approximate and are for illustrative purposes only. While we do not doubt the floor plans accuracy we make no guarantee, warranty or representation as to the accuracy and completeness of the floor plan.

Energy Efficiency Rating		
	Current	Potential
<i>Very energy efficient - lower running costs</i>		
(92-100) A		
(81-91) B	82	82
(69-80) C		
(55-68) D		
(39-54) E		
(21-38) F		
(1-20) G		
<i>Not energy efficient - higher running costs</i>		
England & Wales	EU Directive 2002/91/EC	

London branches open six days a week Mon - Sat

Canary Wharf | City | Colindale | Dartmouth Park | Ealing | Fulham
Hammersmith | Hampstead | Highgate | Hyde Park | Kensington | Kew
Knightsbridge | Nine Elms | Shoreditch | Southall | Surrey Quays
Wapping | Wembley | White City | Woolwich

International offices

China | Hong Kong SAR | India | Indonesia | Qatar | Malaysia | Middle East | Pakistan
Singapore | South Africa | Thailand | Turkey

