



Benham & Reeves

3 Tidal Basin Road, Canary Wharf, E16

£577 per week, £2,500 per month + fees

 2 Bedrooms  2 Bathrooms  Furnished

A Modern 17th floor apartment situated within walking distance from Royal Victoria DLR station.

Please [click here](#) for full detail

Property features

Two Bedrooms | Two Bathrooms | Reception | Fitted Kitchen | Furnished | EPC-B | 24 Hour Concierge | Gym | Royal Victoria DLR

For more information about this property, please call our Canary Wharf branch on

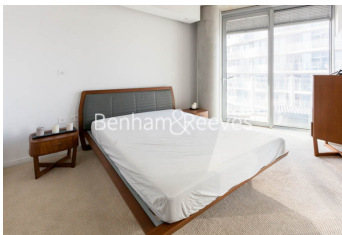
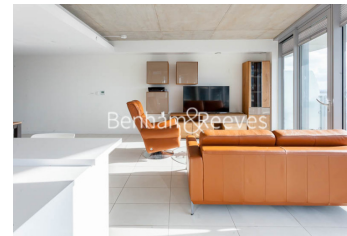
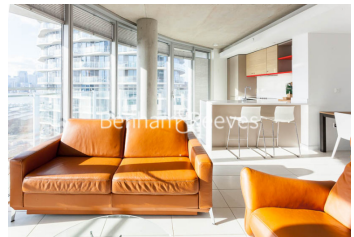
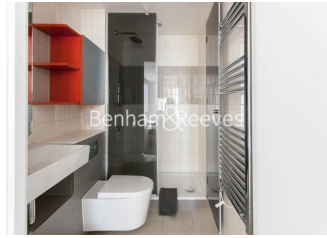
020 8036 3200



Redress & Client Money Protection :

Benham and Reeves are members of The Property Ombudsman redress scheme and have Client Money protection with ARLA Propertymark. You can find more information on our website at <https://www.benhamandreeves.com/membership/>

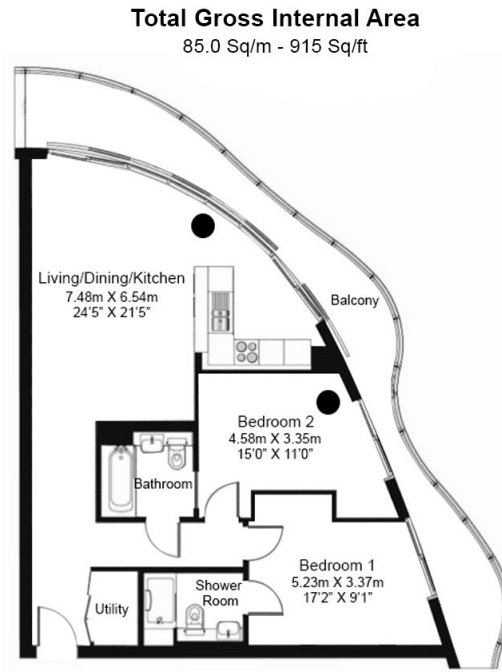
Benham & Reeves



3 Tidal Basin Road, Canary Wharf, E16

£577 per week, £2,500 per month + fees

www.benhams.com



Floor Plan measurements are approximate and are for illustrative purposes only. While we do not doubt the floor plans accuracy, we make no guarantee, warranty or representation as to the accuracy and completeness of the floor plan.

Energy Efficiency Rating		
	Current	Potential
<i>Very energy efficient - lower running costs</i>		
(92-100) A		
(81-91) B	82	82
(69-80) C		
(55-68) D		
(39-54) E		
(21-38) F		
(1-20) G		
<i>Not energy efficient - higher running costs</i>		
England & Wales	EU Directive 2002/91/EC	

London branches open six days a week Mon - Sat

Canary Wharf | City | Colindale | Dartmouth Park | Ealing | Fulham
Hammersmith | Hampstead | Highgate | Hyde Park | Kensington | Kew
Knightsbridge | Nine Elms | Shoreditch | Southall | Surrey Quays
Wapping | Wembley | White City | Woolwich



International offices

China | Hong Kong SAR | India | Indonesia | Israel | Malaysia | Middle East | Pakistan
Qatar | Singapore | South Africa | Thailand | Turkey

Benham & Reeves