



Benham & Reeves

Newell Street, Canary Wharf, E14

£508 per week, £2,200 per month + fees

 2 Bedrooms  1 Bathroom  Furnished

Duplex apartment that offers beautiful period characteristics and a great location in Limehouse, with allocated parking.

Please [click here](#) for full detail

Property features

Brightly Lit Reception w/ Double Bedroom | High ceilings, Wood Flooring | Fully Fitted Separate Kitchen | Close to Limehouse DLR | Beautiful Marble Fireplace | EPC- E | Approx Floor Area 544 SQ FT | Family Bathroom | Nearby DLR at Westferry

For more information about this property,
please call our Canary Wharf branch on

020 8036 3200



Redress & Client Money Protection :
Benham and Reeves are members of The Property Ombudsman redress scheme and have Client Money protection with ARLA Propertymark.
You can find more information on our website at <https://www.benhams.com/membership/>

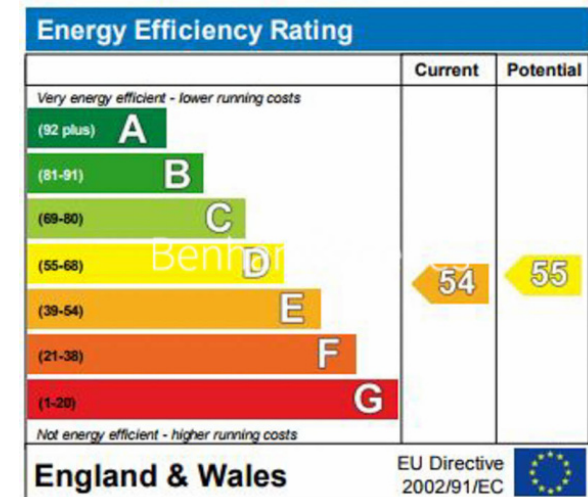
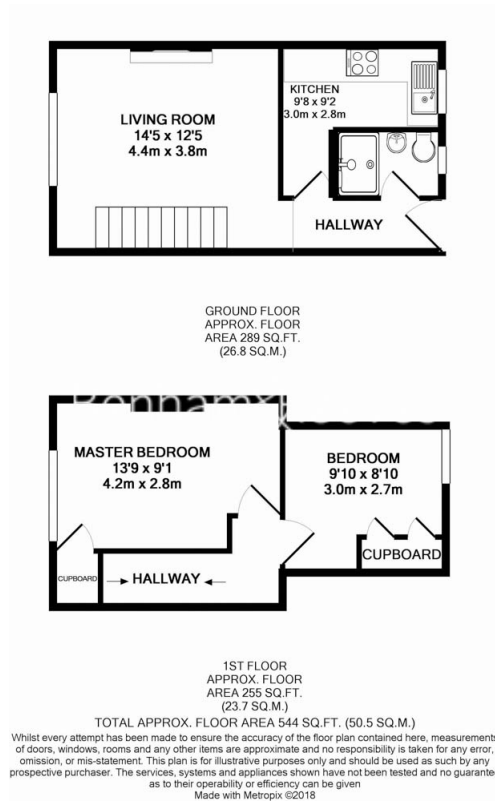
Benham & Reeves



Newell Street, Canary Wharf, E14

£508 per week, £2,200 per month + fees

www.benhams.com



London branches open six days a week Mon - Sat

Canary Wharf | City | Colindale | Dartmouth Park | Ealing | Fulham
Hammersmith | Hampstead | Highgate | Hyde Park | Kensington | Kew
Knightsbridge | Nine Elms | Shoreditch | Southall | Surrey Quays
Wapping | Wembley | White City | Woolwich

International offices

China | Hong Kong SAR | India | Indonesia | Qatar | Malaysia | Middle East | Pakistan
Singapore | South Africa | Thailand | Turkey



Benham & Reeves