



Benham & Reeves

Harcourt Tower, Canary Wharf, E14

£762 per week, £3,302 per month + fees

 2 Bedrooms  2 Bathrooms  Furnished

Modern brand-new apartment situated within a prestigious development in the heart of Canary Wharf residential area two minutes on foot from South Quay DLR Rail station.

Please [click here](#) for full detail

Property features

Two Double Bedroom | One Bathroom | Open Planned Living | Furnished | Fitted Kitchen | EPC-B | Benefits from 24 hour Concierge and Residents Gym | 24 Hour Concierge Service, Swimming Pool and Cinema | Moments from Canary Wharf | Nearby South Quay DLR Station

For more information about this property, please call our Canary Wharf branch on

020 8036 3200

Redress & Client Money Protection :

Benham and Reeves are members of The Property Ombudsman redress scheme and have Client Money protection with ARLA Propertymark. You can find more information on our website at <https://www.benhams.com/membership/>



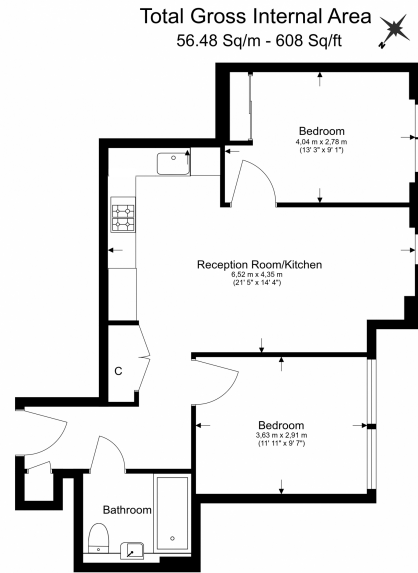
Benham & Reeves



Harcourt Tower, Canary Wharf, E14

£762 per week, £3,302 per month + fees

www.benhams.com



Benham & Reeves

Floor Plan measurements are approximate and are for illustrative purposes only. While we do not doubt the floor plans accuracy, we make no guarantee, warranty or representation as to the accuracy and completeness of the floor plan.

Score	Energy rating	Current	Potential
92+	A		
81-91	B	84 B	84 B
69-80	C		
55-68	D		
39-54	E		
21-38	F		
1-20	G		

London branches open six days a week Mon - Sat

Canary Wharf | City | Colindale | Dartmouth Park | Ealing | Fulham
Hammersmith | Hampstead | Highgate | Hyde Park | Kensington | Kew
Knightsbridge | Nine Elms | Shoreditch | Southall | Surrey Quays
Wapping | Wembley | White City | Woolwich

International offices

China | Hong Kong SAR | India | Indonesia | Israel | Malaysia | Middle East | Pakistan
Qatar | Singapore | South Africa | Thailand | Turkey



Benham & Reeves