



Benham & Reeves

## Dollar Bay, Canary Wharf, E14

£773 per week, £3,350 per month + fees

 2 Bedrooms    2 Bathrooms    Furnished

Contemporary apartment with direct River views and Winter Garden situated in a vibrant development with good onsite amenities. Within walking distance from Canary Wharf and South Quay DLR Station which has direct trains to Bank Station.

Please [click here](#) for full detail

## Property features

**Two Double Bedrooms | Two Bathrooms | Spacious Living Room | Fitted Kitchen, Including Dishwasher | Gym | EPC-B | 24-hour Concierge | Offered on a Furnished Basis | Floor-To-Ceiling Windows | Nearby Canary Wharf Underground Station and South Quay DLR**

For more information about this property, please call our Canary Wharf branch on

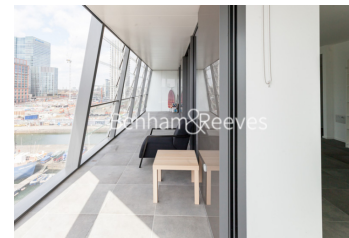
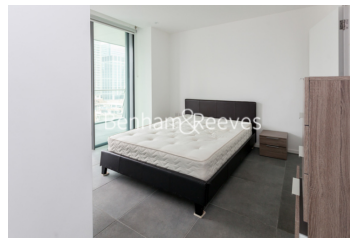
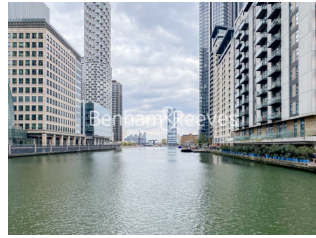
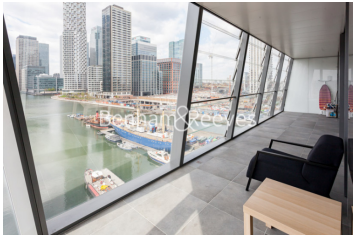
**020 8036 3200**

Redress & Client Money Protection :

Benham and Reeves are members of The Property Ombudsman redress scheme and have Client Money protection with ARLA Propertymark. You can find more information on our website at <https://www.benhams.com/membership/>



**Benham & Reeves**





# Dollar Bay, Canary Wharf, E14

£773 per week, £3,350 per month + fees

www.benhams.com

Score	Energy rating	Current	Potential
92+	A		
81-91	B	82 B	82 B
69-80	C		
55-68	D		
39-54	E		
21-38	F		
1-20	G		

## London branches open six days a week Mon - Sat

Canary Wharf | City | Colindale | Dartmouth Park | Ealing | Fulham  
 Hammersmith | Hampstead | Highgate | Hyde Park | Kensington | Kew  
 Knightsbridge | Nine Elms | Shoreditch | Southall | Surrey Quays  
 Wapping | Wembley | White City | Woolwich

## International offices

China | Hong Kong SAR | India | Indonesia | Qatar | Malaysia | Middle East | Pakistan  
 Singapore | South Africa | Thailand | Turkey

