



Benham & Reeves

**Lyell Street, Canary Wharf, E14**

£450 per week, £1,950 per month + fees

🛏️ 2 Bedrooms    🚿 2 Bathrooms    🚗 Furnished

A modern, spacious apartment with panoramic views and heated swimming pool, situated in a highly anticipated development in Canning Town, E14. Located within walking distance of Canning Town Underground and DLR station (Jubilee Line).

Please [click here](#) for full detail

## Property features

**Modern Apartment | Bespoke Bathroom | Brightly Lit Reception | Open Plan Kitchen | Balcony With Superb Views | EPC-B | Large Bedroom With Fitted Wardrobe | Wood Floors, Floor To Ceiling Windows & Underfloor Heating | 24 Hr Concierge, Residents Gym, Lounge And Swimming Pool | Walk Away From Canning Town Dlr And The Jubilee Services**

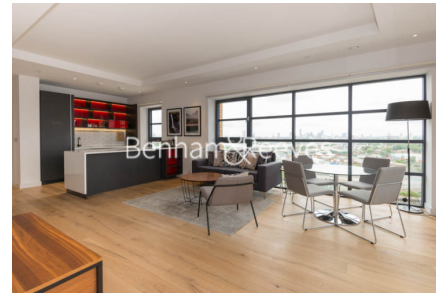
For more information about this property, please call our Canary Wharf branch on

**020 8036 3200**

Redress & Client Money Protection :  
Benham and Reeves are members of The Property Ombudsman redress scheme and have Client Money protection with ARLA Propertymark.  
You can find more information on our website at <https://www.benhams.com/membership/>



Benham & Reeves



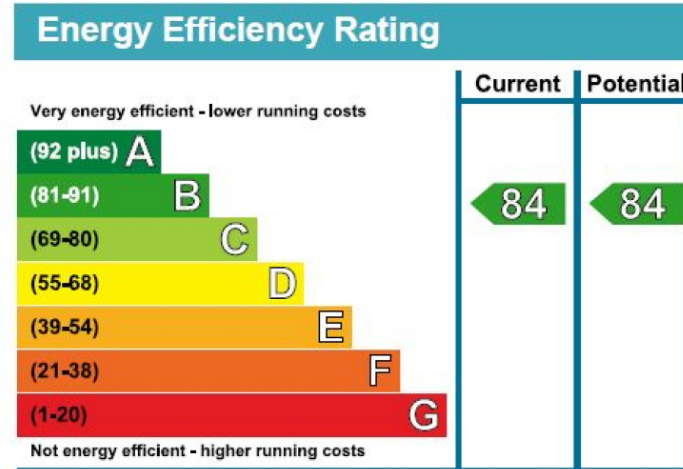
# Lyell Street, Canary Wharf, E14

£450 per week, £1,950 per month + fees

www.benhams.com



Floor Plan measurements are approximate and are for illustrative purposes only. While we do not doubt the floor plans accuracy, we make no guarantee, warranty or representation as to the accuracy and completeness of the floor plan.



## London branches open six days a week Mon - Sat

Canary Wharf | City | Colindale | Dartmouth Park | Ealing | Fulham  
Hammersmith | Hampstead | Highgate | Hyde Park | Kensington | Kew  
Knightsbridge | Nine Elms | Shoreditch | Southall | Surrey Quays  
Wapping | Wembley | White City | Woolwich

## International offices

China | Hong Kong SAR | India | Indonesia | Israel | Malaysia | Middle East | Pakistan  
Qatar | Singapore | South Africa | Thailand | Turkey

