



Benham & Reeves

**Williamsburg Plaza ,Canary Wharf, E14**

£612 per week, £2,652 per month + fees

 2 Bedrooms     2 Bathrooms     Furnished

A smart modern apartment with concierge and resident gym facilities perfectly located for sharers working in Canary Wharf or The City of London with DLR links a short walk away.

Please [click here](#) for full detail

## Property features

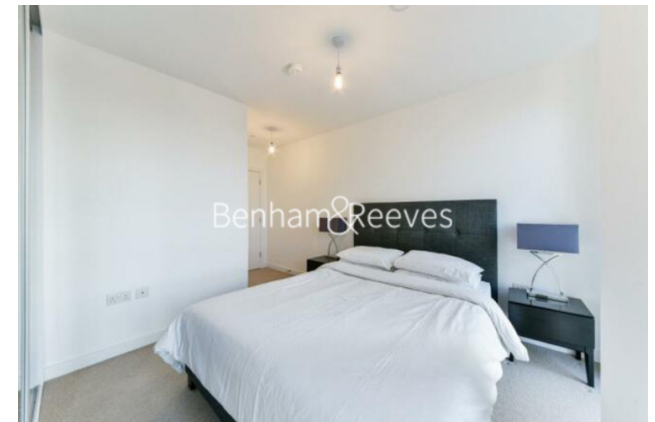
**Two spacious bedrooms two bathroom apartment within walking | Concierge and resident-only gym facilities plus communal | Modern well-equipped Kitchen with appliances including dishw | Bath with overhead Shower + shower room | Two modern bathrooms, one of which is ensuite to the princip | EPC-B | Furnished with a neutral contemporary furnishing pack | DLR station is Blackwall DLR a short walk away**

For more information about this property, please call our Canary Wharf branch on

**020 8036 3200**

Redress & Client Money Protection :

Benham and Reeves are members of The Property Ombudsman redress scheme and have Client Money protection with ARLA Propertymark. You can find more information on our website at <https://www.benhams.com/membership/>



Benham & Reeves





# Williamsburg Plaza ,Canary Wharf, E14

£612 per week, £2,652 per month + fees

www.benhams.com

Energy Efficiency Rating		Environmental Impact Rating		
	Current	Potential		
<p>Very energy efficient - lower running costs</p> <p>(92-100) <b>A</b></p> <p>(81-91) <b>B</b></p> <p>(69-80) <b>C</b></p> <p>(55-68) <b>D</b></p> <p>(39-54) <b>E</b></p> <p>(21-38) <b>F</b></p> <p>(1-20) <b>G</b></p> <p>Not energy efficient - higher running costs</p>	<b>83</b>	<b>83</b>	<p>Very environmentally friendly - lower CO<sub>2</sub> emissions</p> <p>(92-100) <b>A</b></p> <p>(81-91) <b>B</b></p> <p>(69-80) <b>C</b></p> <p>(55-68) <b>D</b></p> <p>(39-54) <b>E</b></p> <p>(21-38) <b>F</b></p> <p>(1-20) <b>G</b></p> <p>Not environmentally friendly - higher CO<sub>2</sub> emissions</p>	<b>89</b>
<b>England &amp; Wales</b>	EU Directive 2002/91/EC		<b>England &amp; Wales</b>	EU Directive 2002/91/EC

## London branches open six days a week Mon - Sat

Canary Wharf | City | Colindale | Dartmouth Park | Ealing | Fulham  
 Hammersmith | Hampstead | Highgate | Hyde Park | Kensington | Kew  
 Knightsbridge | Nine Elms | Shoreditch | Southall | Surrey Quays  
 Wapping | Wembley | White City | Woolwich

## International offices

China | Hong Kong SAR | India | Indonesia | Qatar | Malaysia | Middle East | Pakistan  
 Singapore | South Africa | Thailand | Turkey

