



Benham & Reeves

Williamsburg Plaza, Canary Wharf, E14

£497 per week, £2,154 per month + fees

 1 Bedroom  1 Bathroom  Furnished

MODERN and stylish apartment one bedroom apartment, with rooftop garden, residents' gym and, situated in a highly sought after Manhattan Plaza development in Poplar, E14. Conveniently located within walking distance from Blackwall DLR station.

Please [click here](#) for full detail

Property features

One Bedroom | Brightly Lit Reception With Spectacular Views | 24-Hr Concierge | Fully Fitted Kitchen | Large Double Bedroom | EPC-B | Residents Gym | Private Balcony | Roof top garden | Moments from Blackwall DLR Station

For more information about this property, please call our Canary Wharf branch on

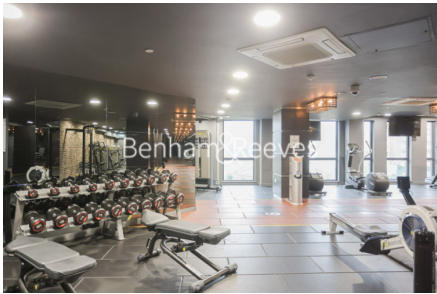
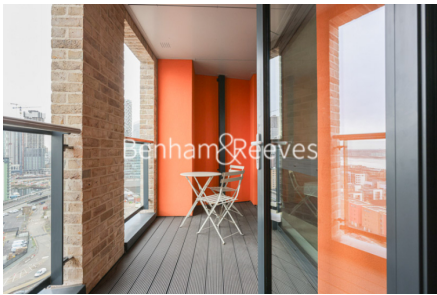
020 8036 3200

Redress & Client Money Protection :

Benham and Reeves are members of The Property Ombudsman redress scheme and have Client Money protection with ARLA Propertymark. You can find more information on our website at <https://www.benhams.com/membership/>



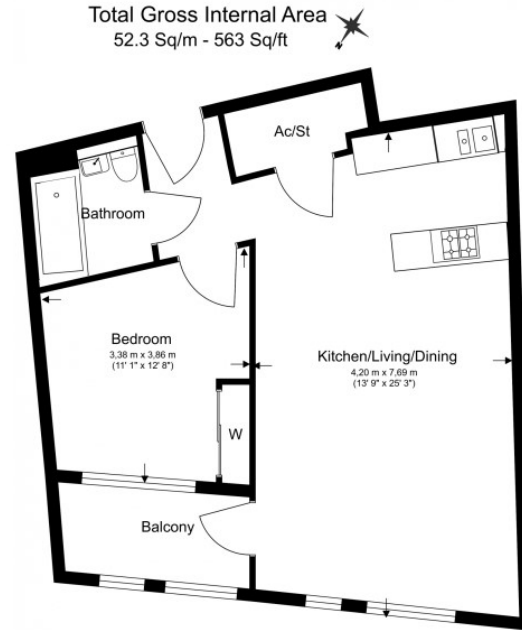
Benham & Reeves



Williamsburg Plaza, Canary Wharf, E14

£497 per week, £2,154 per month + fees

www.benhams.com



Floor Plan measurements are approximate and are for illustrative purposes only. While we do not doubt the floor plans accuracy, we make no guarantee, warranty or representation as to the accuracy and completeness of the floor plan.

Score	Energy rating	Current	Potential
92+	A		
81-91	B	84 B	84 B
69-80	C		
55-68	D		
39-54	E		
21-38	F		
1-20	G		

London branches open six days a week Mon - Sat

Canary Wharf | City | Colindale | Dartmouth Park | Ealing | Fulham
Hammersmith | Hampstead | Highgate | Hyde Park | Kensington | Kew
Knightsbridge | Nine Elms | Shoreditch | Southall | Surrey Quays
Wapping | Wembley | White City | Woolwich

International offices

China | Hong Kong SAR | India | Indonesia | Qatar | Malaysia | Middle East | Pakistan
Singapore | South Africa | Thailand | Turkey

