



Benham & Reeves

London City Island, Botanic Square, E14

£692 per week, £2,999 per month + fees

 2 Bedrooms  2 Bathrooms  Furnished

A Modern apartment situated in the Grantham House at the highly desirable London City Island development in Canning Town, E14, conveniently located within walking distance from Canning Town Underground and DLR station.

Please [click here](#) for full detail

Property features

One Double Bedrooms | Family size bathroom | One Reception | Fitted Kitchen | Insert Furnished | EPC-B | 24 Hour Concierge | Gym and Outdoor Heated Swimming Pool | Nearby Canning Town Underground and DLR

For more information about this property, please call our Canary Wharf branch on

020 8036 3200

Redress & Client Money Protection :

Benham and Reeves are members of The Property Ombudsman redress scheme and have Client Money protection with ARLA Propertymark. You can find more information on our website at <https://www.benham.com/membership/>



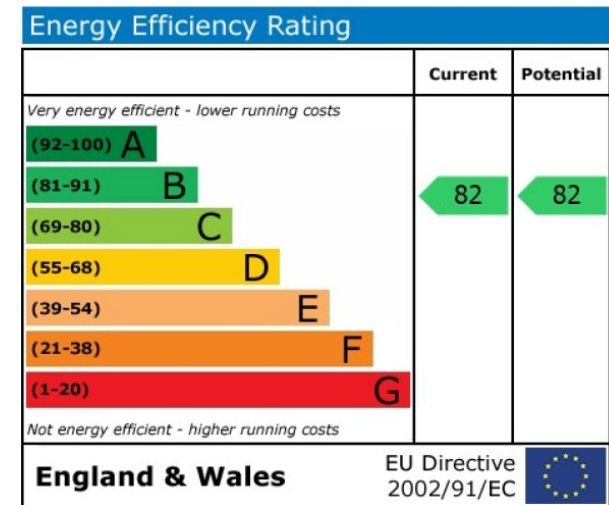
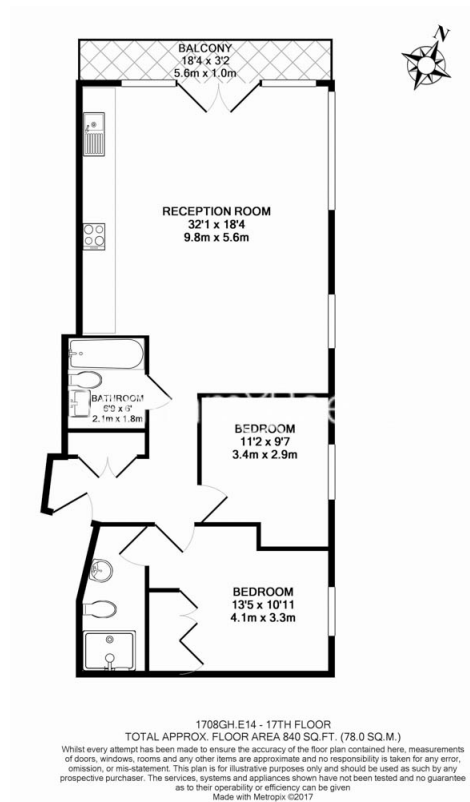
Benham & Reeves



London City Island, Botanic Square, E14

£692 per week, £2,999 per month + fees

www.benhams.com



London branches open six days a week Mon - Sat

Canary Wharf | City | Colindale | Dartmouth Park | Ealing | Fulham
Hammersmith | Hampstead | Highgate | Hyde Park | Kensington | Kew
Knightsbridge | Nine Elms | Shoreditch | Southall | Surrey Quays
Wapping | Wembley | White City | Woolwich

International offices

China | Hong Kong SAR | India | Indonesia | Qatar | Malaysia | Middle East | Pakistan
Singapore | South Africa | Thailand | Turkey

