



Benham & Reeves

Proton Tower, Blackwall Way, E14

£439 per week, £1,902 per month + fees

🛏 1 Bedroom 🚿 1 Bathroom 🚗 Furnished

A bright modern apartment set in a popular Riverside development close to the amenities of Canary Wharf. Perfectly located a short walk from both Blackwell and East India DLR station, which provides convenient services into Canary Wharf and the City.

Please [click here](#) for full detail

Property features

One double bedroom | Modern Bathroom | Open Planned Living | Fitted Kitchen | Furnished | EPC-B | Balcony | Ideal for Canary Wharf and the City | East India DLR nearby

For more information about this property, please call our Canary Wharf branch on

020 8036 3200



Redress & Client Money Protection :
Benham and Reeves are members of The Property Ombudsman redress scheme and have Client Money protection with ARLA Propertymark.
You can find more information on our website at <https://www.benhams.com/membership/>

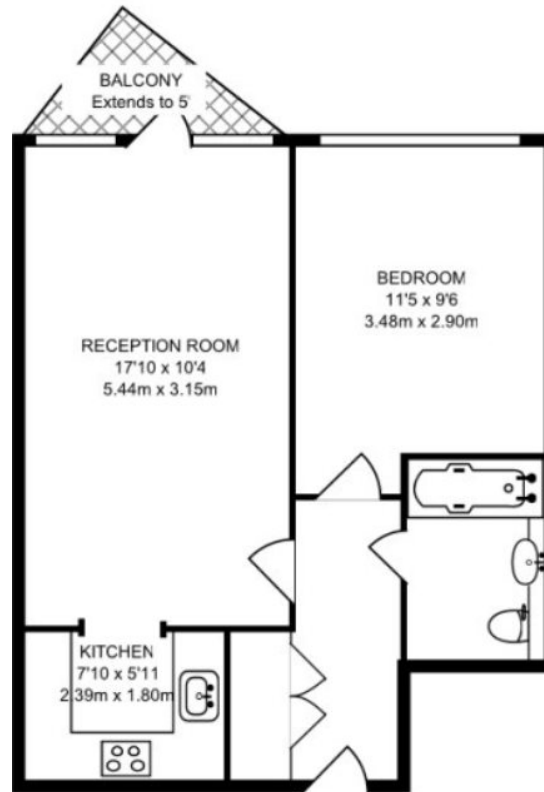
Benham & Reeves



Proton Tower, Blackwall Way, E14

£439 per week, £1,902 per month + fees

www.benhams.com



Energy Efficiency Rating		
	Current	Potential
<i>Very energy efficient - lower running costs</i>		
(92-100) A		
(81-91) B	86	87
(69-80) C		
(55-68) D		
(39-54) E		
(21-38) F		
(1-20) G		
<i>Not energy efficient - higher running costs</i>		
England & Wales	EU Directive 2002/91/EC	

London branches open six days a week Mon - Sat

Canary Wharf | City | Colindale | Dartmouth Park | Ealing | Fulham
 Hammersmith | Hampstead | Highgate | Hyde Park | Kensington | Kew
 Knightsbridge | Nine Elms | Shoreditch | Southall | Surrey Quays
 Wapping | Wembley | White City | Woolwich

International offices

China | Hong Kong SAR | India | Indonesia | Qatar | Malaysia | Middle East | Pakistan
 Singapore | South Africa | Thailand | Turkey

