



Benham & Reeves

## **Larkwood Avenue, Blackheath Hill, SE10**

£496 per week, £2,150 per month + fees

 2 Bedrooms    2 Bathrooms    Furnished

Contemporary furnished 2 bed 2 bath flat located on the second floor situated in Centenary Heights

Please [click here](#) for full detail

## Property features

**Two bedroom | 2 Bathroom furnished flat located on the 2nd floor | Open plan kitchen with well known kitchen appliances | Wooden flooring in the reception plus kitchen and carpets in | Private balcony | EPC- B | Concierge service | Close to amenities | Lift access | 10 mins walk to Lewisham train station**

For more information about this property,  
please call our Woolwich branch on

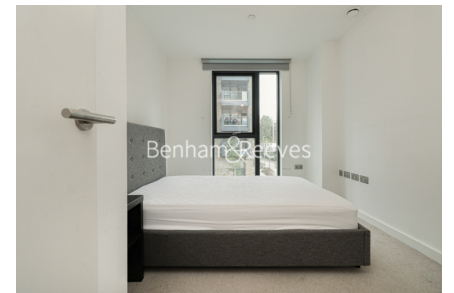
**020 8051 0700**

Redress & Client Money Protection :

Benham and Reeves are members of The Property Ombudsman redress scheme and have Client Money protection with ARLA Propertymark. You can find more information on our website at <https://www.benhams.com/membership/>



**Benham & Reeves**



# Larkwood Avenue, Blackheath Hill, SE10

£496 per week, £2,150 per month + fees

[www.benhams.com](http://www.benhams.com)

Score	Energy rating	Current	Potential
92+	A		
81-91	B	84 B	84 B
69-80	C		
55-68	D		
39-54	E		
21-38	F		
1-20	G		

## London branches open six days a week Mon - Sat

Canary Wharf | City | Colindale | Dartmouth Park | Ealing | Fulham  
Hammersmith | Hampstead | Highgate | Hyde Park | Kensington | Kew  
Knightsbridge | Nine Elms | Shoreditch | Southall | Surrey Quays  
Wapping | Wembley | White City | Woolwich

## International offices

China | Hong Kong SAR | India | Indonesia | Qatar | Malaysia | Middle East | Pakistan  
Singapore | South Africa | Thailand | Turkey

