



Benham & Reeves

**Downside Crescent, Belsize Park, NW3**

£1,200 per week, £5,200 per month + fees

 3 Bedrooms    3 Bathrooms     
Furnished/UnFurnished

An immaculately presented apartment, with full home automation and off-street parking, arranged over two floors and situated in a renovated red brick period building close to the amenities of Belsize Park. Conveniently located moments from Belsize Park underground Station (Northern Line) offering direct services to the West End and the City in less than 15 minutes.

Please [click here](#) for full detail

## Property features

**3 Bedrooms | 3 Bathrooms | Double Reception | Furn/Unfurn | Open Plan Kitchen | EPC-C | Air Conditioned | Media Centre | Nearby Belsize Park underground station**

For more information about this property,  
please call our Hampstead branch on

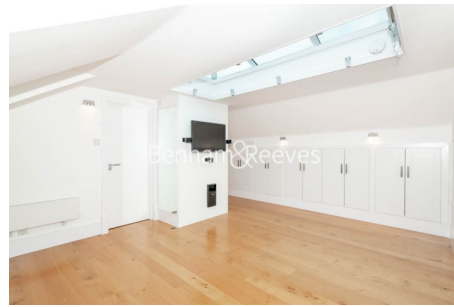
**020 7435 9681**

Redress & Client Money Protection :

Benham and Reeves are members of The Property Ombudsman redress scheme and have Client Money protection with ARLA Propertymark. You can find more information on our website at <https://www.benhams.com/membership/>



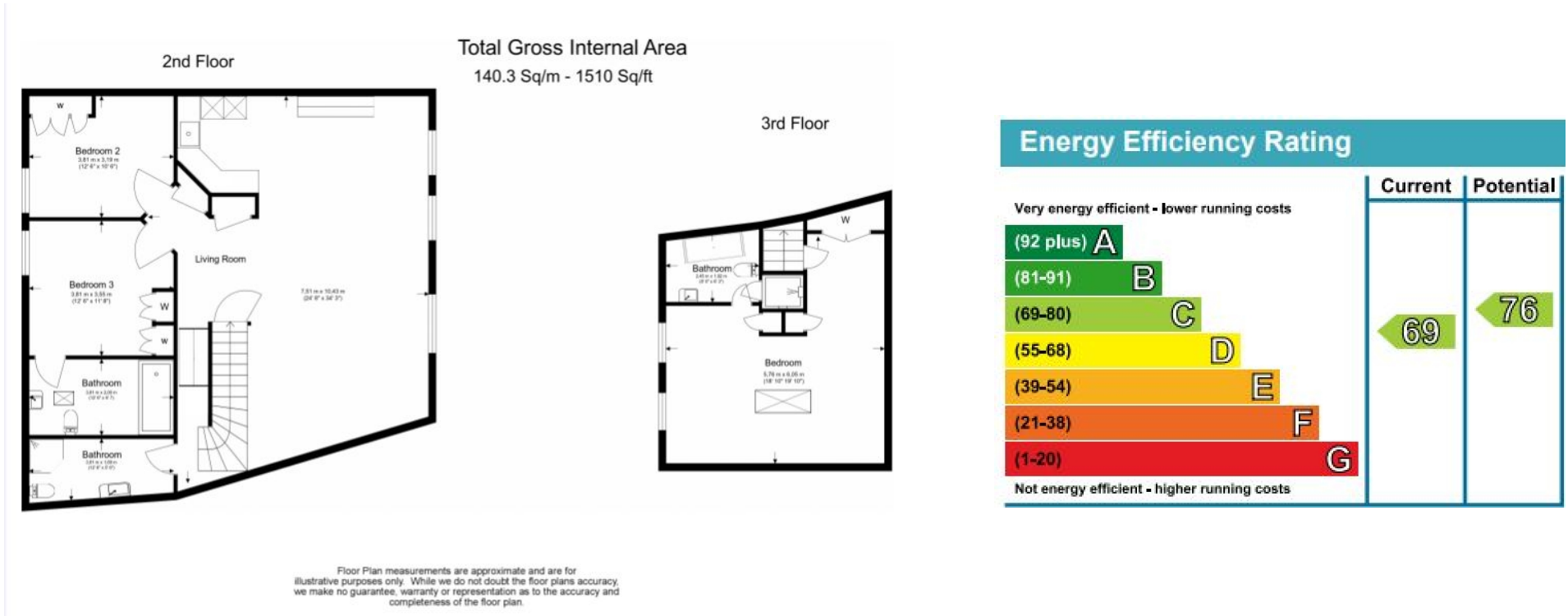
Benham & Reeves



# Downside Crescent, Belsize Park, NW3

£1,200 per week, £5,200 per month + fees

www.benhams.com



## London branches open six days a week Mon - Sat

Canary Wharf | City | Colindale | Dartmouth Park | Ealing | Fulham  
 Hammersmith | Hampstead | Highgate | Hyde Park | Kensington | Kew  
 Knightsbridge | Nine Elms | Shoreditch | Southall | Surrey Quays  
 Wapping | Wembley | White City | Woolwich

## International offices

China | Hong Kong SAR | India | Indonesia | Qatar | Malaysia | Middle East | Pakistan  
 Singapore | South Africa | Thailand | Turkey

