



Benham & Reeves

**Sovereign Court, Beadon Road, W6**

£831 per week, £3,600 per month + fees

 2 Bedrooms    2 Bathrooms    Unfurnished

Spacious luxury, 2nd floor air conditioned apartment is situated within a prestigious development in the heart of Hammersmith. Located within walking distance from Hammersmith tube station

Please [click here](#) for full detail

## Property features

**2 Double Bedroom Apartment with Built-in Wardrobe | Fully Fitted Kitchen Integrated with Well-Known Appliances | Double Reception Room with Dining Area | LED Spotlights / Sizable Private Balcony | Luxurious 2 x Bathrooms | EPC-B | Air Ventilation / Underfloor Heating / Air Conditioning | Offered Unfurnished | Abundance of Storage | Nearby Hammersmith Stations**

For more information about this property, please call our Hammersmith branch on

**020 8600 0960**

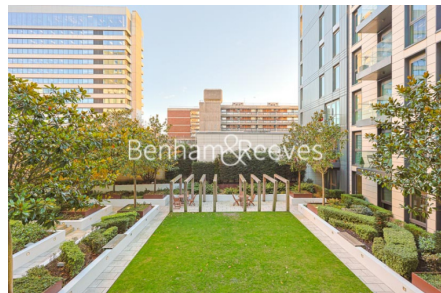
Redress & Client Money Protection :

Benham and Reeves are members of The Property Ombudsman redress scheme and have Client Money protection with ARLA Propertymark. You can find more information on our website at <https://www.benhams.com/membership/>



Benham & Reeves

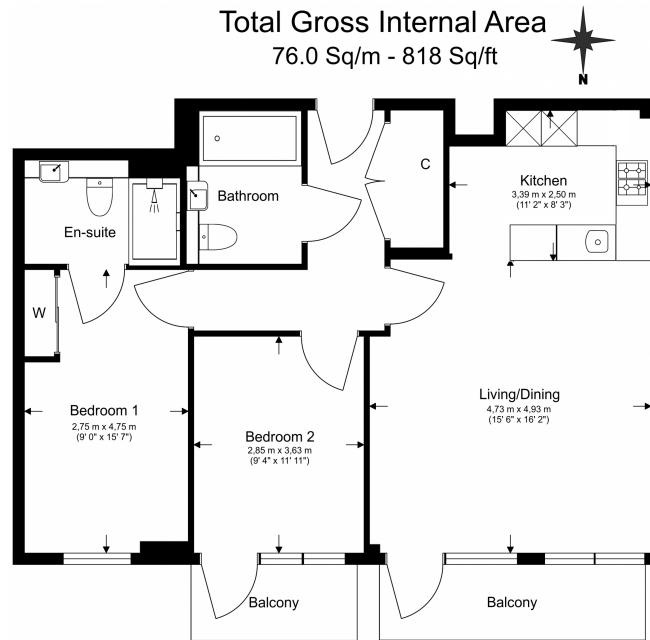




# Sovereign Court, Beadon Road, W6

£831 per week, £3,600 per month + fees

[www.benhams.com](http://www.benhams.com)



Benham & Reeves

Floor Plan measurements are approximate and are for illustrative purposes only. While we do not doubt the floor plans accuracy, we make no guarantee, warranty or representation as to the accuracy and completeness of the floor plan.

## London branches open six days a week Mon - Sat

Canary Wharf | City | Colindale | Dartmouth Park | Ealing | Fulham  
Hammersmith | Hampstead | Highgate | Hyde Park | Kensington | Kew  
Knightsbridge | Nine Elms | Shoreditch | Southall | Surrey Quays  
Wapping | Wembley | White City | Woolwich

## International offices

China | Hong Kong SAR | India | Indonesia | Qatar | Malaysia | Middle East | Pakistan  
Singapore | South Africa | Thailand | Turkey



Benham & Reeves