



Benham & Reeves

Sesame Apartments, Battersea, SW11

£485 per week, £2,100 per month + fees

🛏 1 Bedroom 🚿 1 Bathroom 🛋 Furnished

A contemporary apartment located in a modern building near the River Thames. Ideally located a 15-minute walk from Clapham Junction Station.

Please [click here](#) for full detail

Property features

1 Bedroom | 1 Bathroom | Reception | Furnished | Fitted Kitchen | EPC-B | Lifts to all floors | 24 Hour concierge | Nearby Clapham Junction and Battersea Park

For more information about this property,
please call our Fulham branch on

020 7348 7620



Redress & Client Money Protection :
Benham and Reeves are members of The Property Ombudsman redress scheme and have Client Money protection with ARLA Propertymark.
You can find more information on our website at <https://www.benhams.com/membership/>

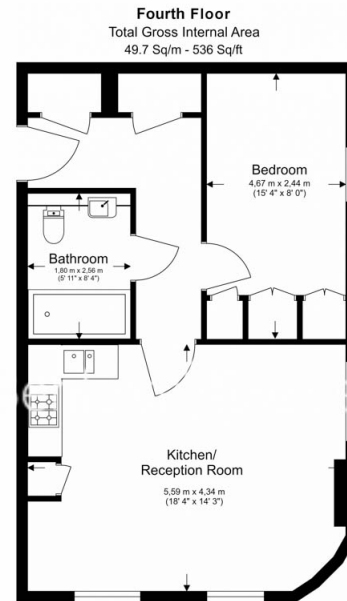
Benham & Reeves



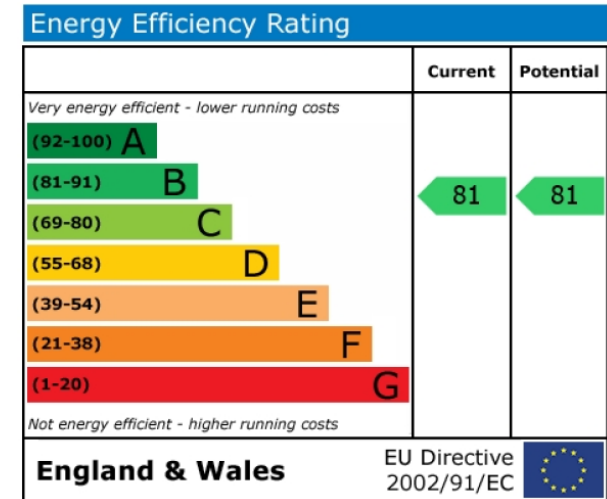
Sesame Apartments, Battersea, SW11

£485 per week, £2,100 per month + fees

www.benhams.com



Floor Plan measurements are approximate and are for illustrative purposes only. While we do not doubt the floor plans accuracy, we make no guarantee, warranty or representation as to the accuracy and completeness of the floor plan.



London branches open six days a week Mon - Sat

Canary Wharf | City | Colindale | Dartmouth Park | Ealing | Fulham
Hammersmith | Hampstead | Highgate | Hyde Park | Kensington | Kew
Knightsbridge | Nine Elms | Shoreditch | Southall | Surrey Quays
Wapping | Wembley | White City | Woolwich

International offices

China | Hong Kong SAR | India | Indonesia | Qatar | Malaysia | Middle East | Pakistan
Singapore | South Africa | Thailand | Turkey



Benham & Reeves