



Benham & Reeves

Electric Boulevard, Battersea Power Station, SW11

£635 per week, £2,752 per month + fees

 1 Bedroom  1 Bathroom  Furnished

A bright Manhattan studio apartment situated within a highly popular development a short walk from the Battersea Power Station Tube (Northern Line), and the Riverboat services.

Please [click here](#) for full detail

Property features

Manhattan Studio | Separate sleeping area | Air cooling | Winter garden | Furnished | EPC-B | 24 hour concierge | Residence gym | Residence sky lounge | Battersea Power Station Tube

For more information about this property, please call our Nine Elms branch on

020 3282 3700

Redress & Client Money Protection :

Benham and Reeves are members of The Property Ombudsman redress scheme and have Client Money protection with ARLA Propertymark. You can find more information on our website at <https://www.benhams.com/membership/>



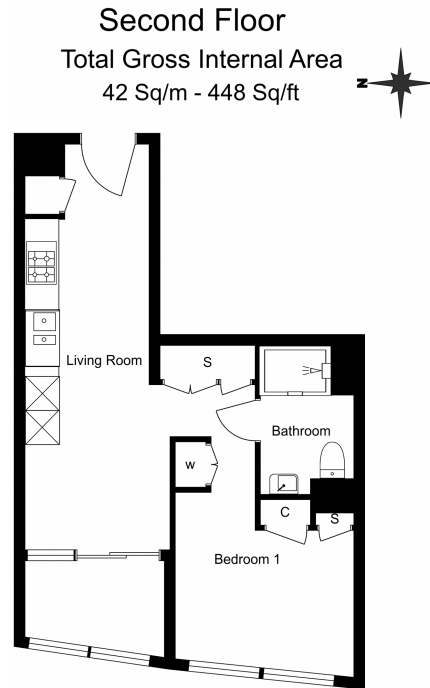
Benham & Reeves



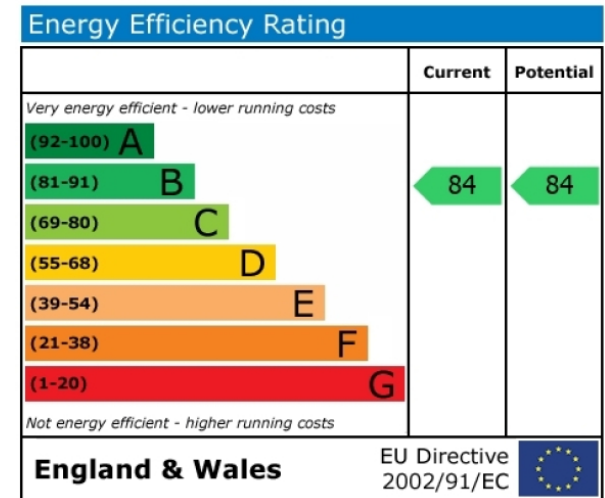
Electric Boulevard, Battersea Power Station, SW11

www.benhams.com

£635 per week, £2,752 per month + fees



Floor Plan measurements are approximate and are for illustrative purposes only. While we do not doubt the floor plans accuracy, we make no guarantee, warranty or representation as to the accuracy and completeness of the floor plan.



London branches open six days a week Mon - Sat

Canary Wharf | City | Colindale | Dartmouth Park | Ealing | Fulham
Hammersmith | Hampstead | Highgate | Hyde Park | Kensington | Kew
Knightsbridge | Nine Elms | Shoreditch | Southall | Surrey Quays
Wapping | Wembley | White City | Woolwich

International offices

China | Hong Kong SAR | India | Indonesia | Qatar | Malaysia | Middle East | Pakistan
Singapore | South Africa | Thailand | Turkey



Benham & Reeves