



Benham & Reeves

Harrods Village, Barnes, SW13

£669 per week, £2,900 per month + fees

 2 Bedrooms  2 Bathrooms  Furnished

Premium size, luxury second floor apartment situated in a highly sought-after gated development in Barnes. Allocated parking space included. The closest station is Hammersmith.

Please [click here](#) for full detail

Property features

2 Bedroom Furnished Flat Located On The 2nd Floor | Fitted Kitchen Appliances | Wood Flooring Throughout | 24 Hours CCTV Secure Development | Large Master Bedroom With En Suites Bathroom | EPC-C | Close To Amenities | Gymnasium And Swimming Pool Onsite | Allocated Parking Space Included | Hammersmith Underground Station

For more information about this property, please call our Hammersmith branch on

020 8600 0960

Redress & Client Money Protection :

Benham and Reeves are members of The Property Ombudsman redress scheme and have Client Money protection with ARLA Propertymark. You can find more information on our website at <https://www.benhams.com/membership/>



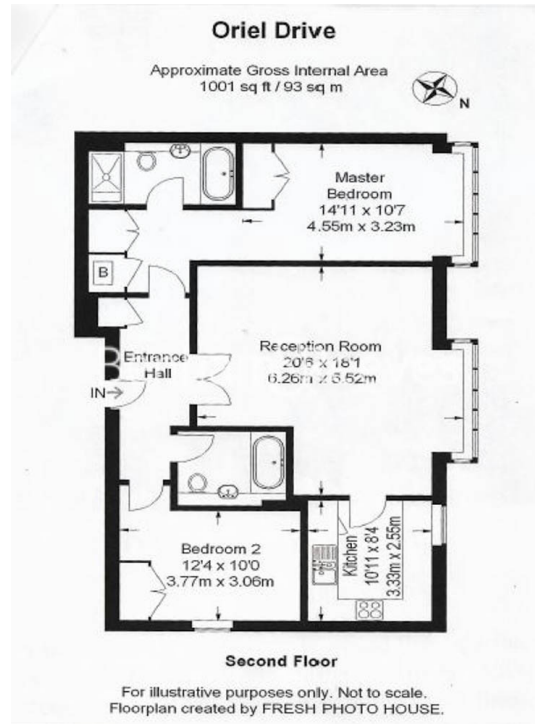
Benham & Reeves



Harrods Village, Barnes, SW13

£669 per week, £2,900 per month + fees

www.benhams.com



Score	Energy rating	Current	Potential
92+	A		
81-91	B		
69-80	C	73 c	74 c
55-68	D		
39-54	E		
21-38	F		
1-20	G		

London branches open six days a week Mon - Sat

Canary Wharf | City | Colindale | Dartmouth Park | Ealing | Fulham
 Hammersmith | Hampstead | Highgate | Hyde Park | Kensington | Kew
 Knightsbridge | Nine Elms | Shoreditch | Southall | Surrey Quays
 Wapping | Wembley | White City | Woolwich

International offices

China | Hong Kong SAR | India | Indonesia | Qatar | Malaysia | Middle East | Pakistan
 Singapore | South Africa | Thailand | Turkey

