



Benham & Reeves

Bromyard Avenue, Acton, W3

£404 per week, £1,751 per month + fees

 1 Bedroom  1 Bathroom  Furnished

An incredibly impressive modern 4th floor apartment situated in a sought-after private development with 24hr concierge close to the amenities of Acton. Located a short journey from Acton Central Overground Station.

Please [click here](#) for full detail

Property features

Bedroom | Bathroom | Reception | Fitted kitchen | Furnished | EPC-C | 24hr Concierge | Balcony | Nearby East Acton Station

For more information about this property, please call our Ealing branch on

020 8280 0140

Redress & Client Money Protection :

Benham and Reeves are members of The Property Ombudsman redress scheme and have Client Money protection with ARLA Propertymark. You can find more information on our website at <https://www.benhams.com/membership/>



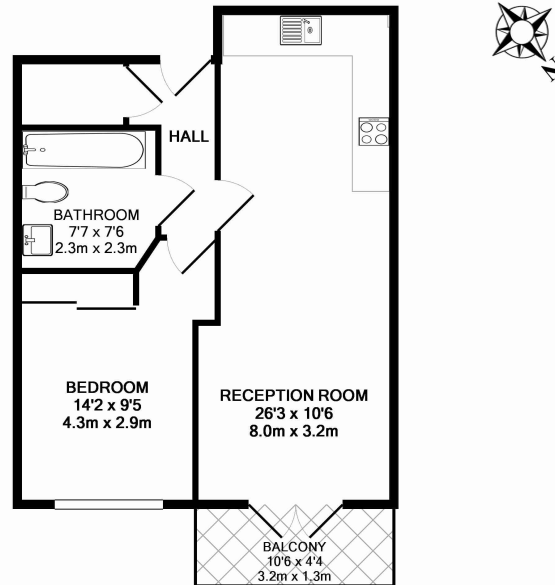
Benham & Reeves



Bromyard Avenue, Acton, W3

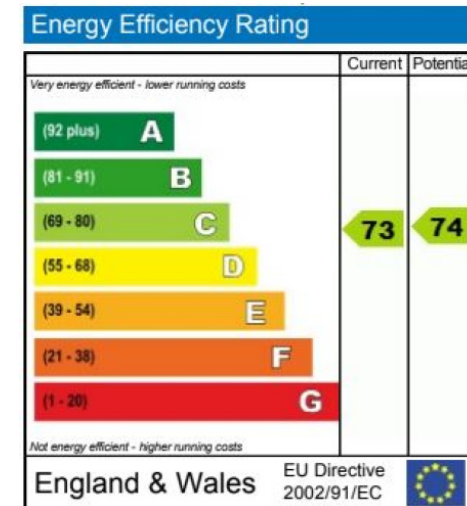
£404 per week, £1,751 per month + fees

www.benhams.com



00530-63NH.W3 - 4TH FLOOR
TOTAL APPROX. FLOOR AREA 497 SQ.FT. (46.1 SQ.M.)

Whilst every attempt has been made to ensure the accuracy of the floor plan contained here, measurements of doors, windows, rooms and any other items are approximate and no responsibility is taken for any error, omission, or mis-statement. This plan is for illustrative purposes only and should be used as such by any prospective purchaser. The services, systems and appliances shown have not been tested and no guarantee as to their operability or efficiency can be given.
Made with Metropix ©2015



London branches open six days a week Mon - Sat

Canary Wharf | City | Colindale | Dartmouth Park | Ealing | Fulham
Hammersmith | Hampstead | Highgate | Hyde Park | Kensington | Kew
Knightsbridge | Nine Elms | Shoreditch | Southall | Surrey Quays
Wapping | Wembley | White City | Woolwich

International offices

China | Hong Kong SAR | India | Indonesia | Qatar | Malaysia | Middle East | Pakistan
Singapore | South Africa | Thailand | Turkey



Benham & Reeves