



Benham & Reeves

## **Heartwood Boulevard, Acton, W3**

£450 per week, £1,950 per month + fees

 Studio  1 Bathroom  Furnished

This studio apartment is situated on the 9th floor, offering plenty of natural light. Acton Mainline Station is just a short walk away and is a strategic stop on the new super-fast Elizabeth Line.

Please [click here](#) for full detail

## Property features

**Studio apartment | Concierge | Balcony | Wood floors | Furnished | EPC-B | 431 sq ft | Beautiful and modern bathroom | Nearby Acton Mainline Station**

For more information about this property,  
please call our Ealing branch on

**020 8280 0140**

Redress & Client Money Protection :

Benham and Reeves are members of The Property Ombudsman redress scheme and have Client Money protection with ARLA Propertymark. You can find more information on our website at <https://www.benhams.com/membership/>



Benham&Reeves





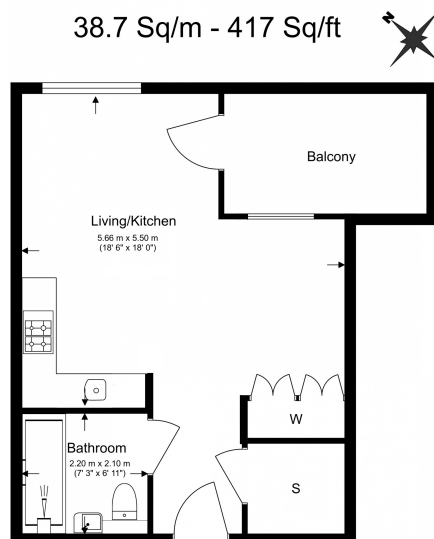
# Heartwood Boulevard, Acton, W3

£450 per week, £1,950 per month + fees

[www.benhams.com](http://www.benhams.com)

Total Gross Internal Area

38.7 Sq/m - 417 Sq/ft



Floor Plan measurements are approximate and are for illustrative purposes only. While we do not doubt the floor plans accuracy, we make no guarantee, warranty or representation as to the accuracy and completeness of the floor plan.

Score	Energy rating	Current	Potential
92+	A		
81-91	B	82 B	82 B
69-80	C		
55-68	D		
39-54	E		
21-38	F		
1-20	G		

## London branches open six days a week Mon - Sat

Canary Wharf | City | Colindale | Dartmouth Park | Ealing | Fulham  
Hammersmith | Hampstead | Highgate | Hyde Park | Kensington | Kew  
Knightsbridge | Nine Elms | Shoreditch | Southall | Surrey Quays  
Wapping | Wembley | White City | Woolwich

## International offices

China | Hong Kong SAR | India | Indonesia | Qatar | Malaysia | Middle East | Pakistan  
Singapore | South Africa | Thailand | Turkey



Benham&Reeves