



Benham & Reeves

## **East Acton Lane, Acton, W3**

£554 per week, £2,401 per month + fees

 2 Bedrooms    2 Bathrooms    Furnished

A stunning 13th floor apartment situated within an exciting development in Acton, close to East Acton Station (Central Line) providing services to Central London in under 20 minutes.

Please [click here](#) for full detail

## Property features

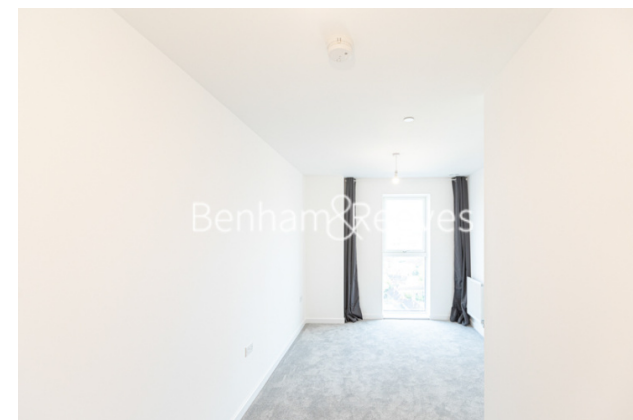
**Brand New | Balcony | Furnished/part furnished | Large Open Plan Reception | Wood Floor | EPC-B | Large Windows | Fully Fitted Modern Kitchen | Close To Fast Transport Connections | Nearby East Acton Station**

For more information about this property,  
please call our Ealing branch on

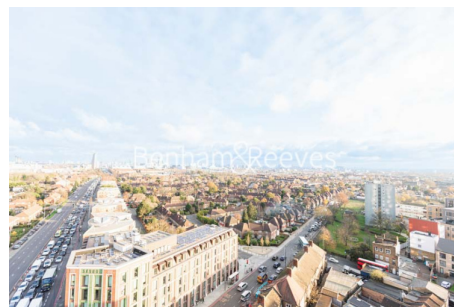
**020 8280 0140**

Redress & Client Money Protection :

Benham and Reeves are members of The Property Ombudsman redress scheme and have Client Money protection with ARLA Propertymark. You can find more information on our website at <https://www.benhams.com/membership/>



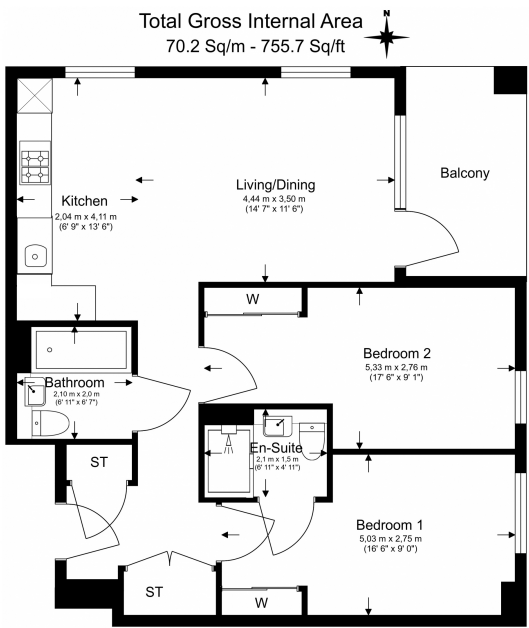
**Benham & Reeves**



# East Acton Lane, Acton, W3

£554 per week, £2,401 per month + fees

www.benhams.com



Floor Plan measurements are approximate and are for illustrative purposes only. While we do not doubt the floor plans accuracy, we make no guarantee, warranty or representation as to the accuracy and completeness of the floor plan.

Score	Energy rating	Current	Potential
92+	A		
81-91	B	85   B	85   B
69-80	C		
55-68	D		
39-54	E		
21-38	F		
1-20	G		

## London branches open six days a week Mon - Sat

Canary Wharf | City | Colindale | Dartmouth Park | Ealing | Fulham  
Hammersmith | Hampstead | Highgate | Hyde Park | Kensington | Kew  
Knightsbridge | Nine Elms | Shoreditch | Southall | Surrey Quays  
Wapping | Wembley | White City | Woolwich



## International offices

China | Hong Kong SAR | India | Indonesia | Qatar | Malaysia | Middle East | Pakistan  
Singapore | South Africa | Thailand | Turkey