



Benham & Reeves

Tilston Bright Square, Abbey Wood, SE2

£439 per week, £1,902 per month + fees

 2 Bedrooms  2 Bathrooms  Furnished

A well-proportioned 5th floor apartment with allocated car parking situated in a popular development located near Abbey Wood National Rail Station.

Please [click here](#) for full detail

Property features

2 Bedrooms | 2 Bathrooms | Open plan reception | Furnished | Open plan fitted kitchen | EPC-B | Balcony | On site Sainsbury's store | Nearby Abbey Wood railway station

For more information about this property, please call our Woolwich branch on

020 8051 0700



Redress & Client Money Protection :
Benham and Reeves are members of The Property Ombudsman redress scheme and have Client Money protection with ARLA Propertymark.
You can find more information on our website at <https://www.benhams.com/membership/>

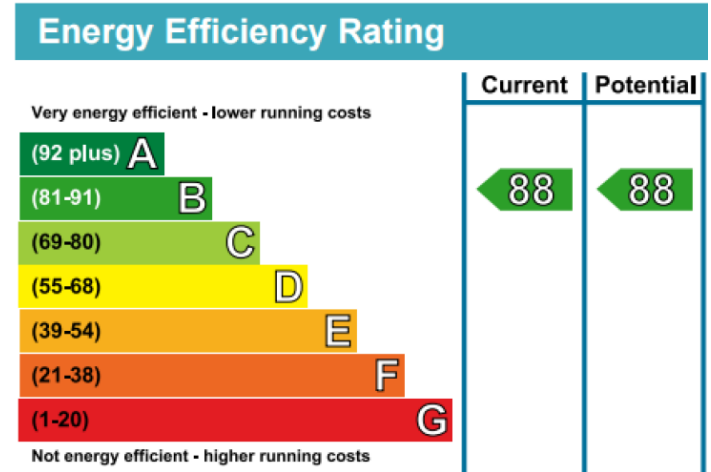
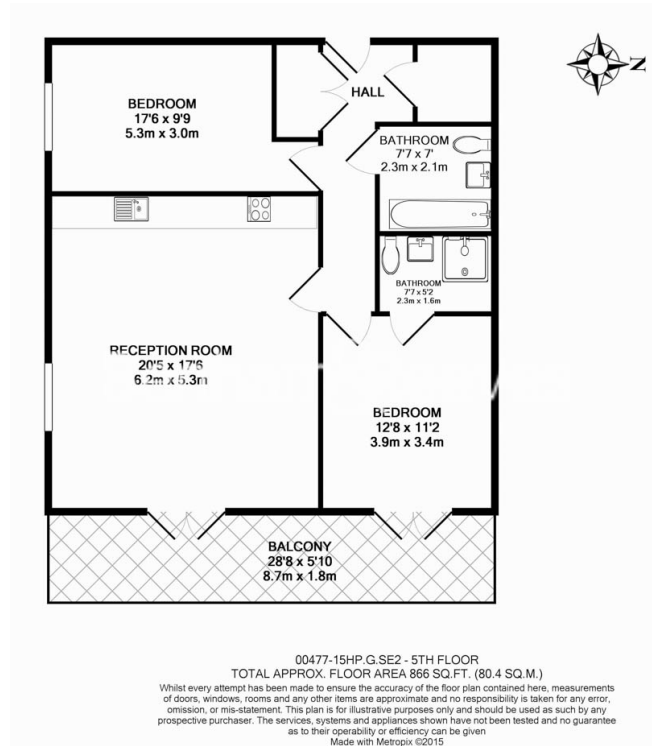
Benham & Reeves



Tilston Bright Square, Abbey Wood, SE2

£439 per week, £1,902 per month + fees

www.benhams.com



London branches open six days a week Mon - Sat

Canary Wharf | City | Colindale | Dartmouth Park | Ealing | Fulham
Hammersmith | Hampstead | Highgate | Hyde Park | Kensington | Kew
Knightsbridge | Nine Elms | Shoreditch | Southall | Surrey Quays
Wapping | Wembley | White City | Woolwich

International offices

China | Hong Kong SAR | India | Indonesia | Qatar | Malaysia | Middle East | Pakistan
Singapore | South Africa | Thailand | Turkey

