



Benham & Reeves

Neo Bankside, 70 Holland Street, SE1

£700 per week, £3,033 per month + fees

 1 Bedroom  1 Bathroom  Furnished

A stylish apartment situated within an iconic development located on the Southbank within a short walk of the City and London Bridge.

Please [click here](#) for full detail

Property features

Spacious 1 Bedroom Apartment | Bespoke bathroom - both walk in shower and bathtub | Open Plan Living Space | Integrated kitchen | Furnished | EPC-B | Dedicated 24-hour Concierge, Gym | Exceptional Views | Excellent Transport links Nearby | Southwark, Blackfriars & London Bridge Underground Station

For more information about this property,
please call our City branch on

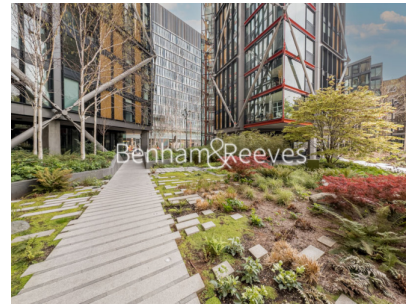
020 7213 9700

Redress & Client Money Protection :

Benham and Reeves are members of The Property Ombudsman redress scheme and have Client Money protection with ARLA Propertymark. You can find more information on our website at <https://www.benhams.com/membership/>



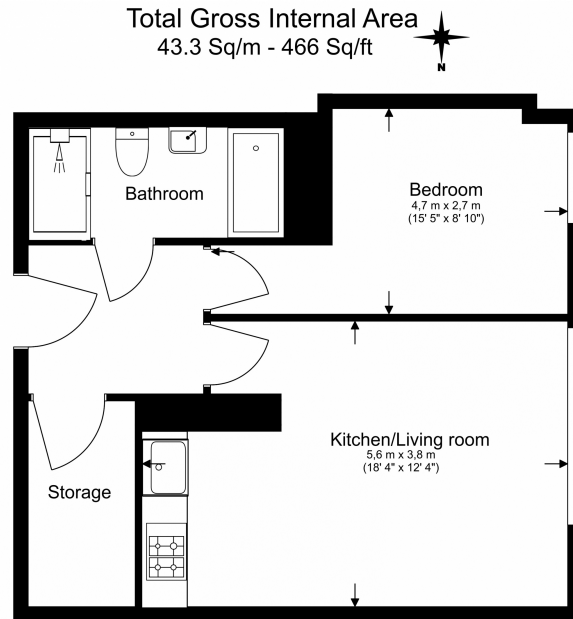
Benham & Reeves



Neo Bankside, 70 Holland Street, SE1

£700 per week, £3,033 per month + fees

www.benhams.com



Floor Plan measurements are approximate and are for illustrative purposes only. While we do not doubt the floor plans accuracy, we make no guarantee, warranty or representation as to the accuracy and completeness of the floor plan.

Score	Energy rating	Current	Potential
92+	A		
81-91	B	82 B	82 B
69-80	C		
55-68	D		
39-54	E		
21-38	F		
1-20	G		

London branches open six days a week Mon - Sat

Canary Wharf | City | Colindale | Dartmouth Park | Ealing | Fulham
Hammersmith | Hampstead | Highgate | Hyde Park | Kensington | Kew
Knightsbridge | Nine Elms | Shoreditch | Southall | Surrey Quays
Wapping | Wembley | White City | Woolwich

International offices

China | Hong Kong SAR | India | Indonesia | Qatar | Malaysia | Middle East | Pakistan
Singapore | South Africa | Thailand | Turkey

