



Benham & Reeves

The Heron, 5 Moor Lane, EC2Y

£625 per week, £2,708 per month + fees

🏠 Studio 🚿 1 Bathroom 🛋️ Furnished

Luxury air-conditioned 15th floor island Studio suite situated in a prestigious residential building development, with luxury facilities, located a stone's throw from Moorgate underground and Overground stations.

Please [click here](#) for full detail

Property features

Studio Apartment | Family Size Bathroom | Open Plan Living Space | Fitted Kitchen | Furnished | EPC-C | 24-Hour Concierge | Residents Only Gym, Club & Roof Terrace | Private Balcony | Moorgate Station Nearby

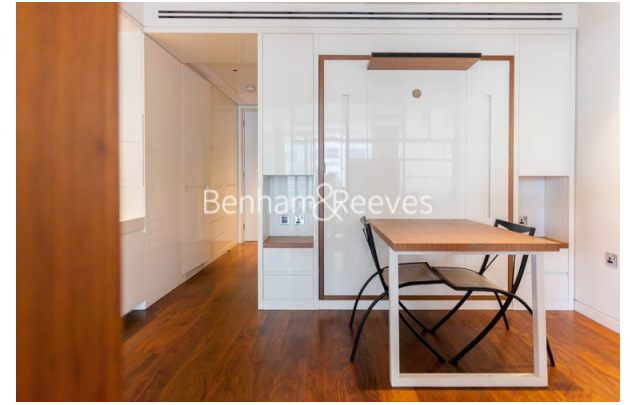
For more information about this property,
please call our City branch on

020 7213 9700



Redress & Client Money Protection :
Benham and Reeves are members of The Property Ombudsman redress scheme and have Client Money protection with ARLA Propertymark.
You can find more information on our website at <https://www.benhams.com/membership/>

Benham & Reeves



The Heron, 5 Moor Lane, EC2Y

£625 per week, £2,708 per month + fees

www.benhams.com



London branches open six days a week Mon - Sat

Canary Wharf | City | Colindale | Dartmouth Park | Ealing | Fulham
Hammersmith | Hampstead | Highgate | Hyde Park | Kensington | Kew
Knightsbridge | Nine Elms | Shoreditch | Southall | Surrey Quays
Wapping | Wembley | White City | Woolwich

International offices

China | Hong Kong SAR | India | Indonesia | Qatar | Malaysia | Middle East | Pakistan
Singapore | South Africa | Thailand | Turkey

