



Benham & Reeves

Kings House, 396 Kings Road, Chelsea SW3

£875 per week, £3,792 per month + fees

 2 Bedrooms  2 Bathrooms  Furnished

A beautifully-appointed & stylish 915 sq ft TWO-BEDROOM luxury apartment in KINGS HOUSE and situated in prime CHELSEA on The King's Road within minutes of fashionable shops, bars & restaurants.

Please [click here](#) for full detail

Property features

Two Bedrooms | Two Bathrooms | Double Length Reception | Eat-In Kitchen | Prime Chelsea Location | EPC-TBC | Recently-Renovated | Furnished | 915 Sq Ft | Sloane Square Station

For more information about this property, please call our Knightsbridge branch on

020 7581 2112

Redress & Client Money Protection :

Benham and Reeves are members of The Property Ombudsman redress scheme and have Client Money protection with ARLA Propertymark. You can find more information on our website at <https://www.benhams.com/membership/>



Benham & Reeves

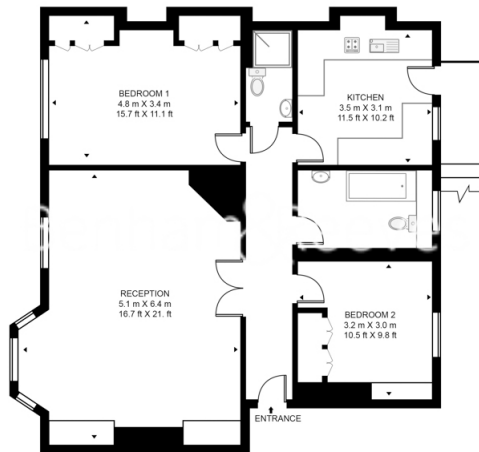


Kings House, 396 Kings Road, Chelsea SW3

£875 per week, £3,792 per month + fees

www.benhams.com

KINGS HOUSE, 396 KINGS ROAD
APPROXIMATE GROSS INTERNAL FLOOR AREA 915 SQ.FT (85 SQ.M)



THIRD FLOOR

This floor plan has been defined by the RICS Code of Measurement. This floor plan and all others are for approximate representative purposes only and upon usage is agreed to as such by the client.
WWW: hdnvart.com | TEL: 0203 974 1567 | EMAIL: info@hdnvart.com

London branches open six days a week Mon - Sat

Canary Wharf | City | Colindale | Dartmouth Park | Ealing | Fulham
Hammersmith | Hampstead | Highgate | Hyde Park | Kensington | Kew
Knightsbridge | Nine Elms | Shoreditch | Southall | Surrey Quays
Wapping | Wembley | White City | Woolwich

International offices

China | Hong Kong SAR | India | Indonesia | Israel | Malaysia | Middle East | Pakistan
Qatar | Singapore | South Africa | Thailand | Turkey



Benham & Reeves