



Benham & Reeves

Lincoln Square, 18 Portugal Street, WC2A

£1,200 per week, £5,200 per month + fees

 1 Bedroom  1 Bathroom  Furnished

A stunning apartment situated within a luxurious development surrounded by a calm and quiet sanctuary, and with easy access to the cultural hub of Covent Garden, Lincoln Inn Fields, Holborn Tube Station, Trafalgar Square and Leicester Square.

Please [click here](#) for full detail

Property features

1 Bedroom Apartment | Bespoke Family Bathroom with both Shower and Bathtub | Open Plan Living Space | Fully Fitted Kitchen | Unfurnished | EPC-B | 24Hour Concierge, Swimming pool, sauna, steam, vitality pool | Walk in Wardrobe | Excellent Transport Links nearby | Holborn Tube Station

For more information about this property,
please call our City branch on

020 7213 9700

Redress & Client Money Protection :

Benham and Reeves are members of The Property Ombudsman redress scheme and have Client Money protection with ARLA Propertymark. You can find more information on our website at <https://www.benhams.com/membership/>



Benham & Reeves

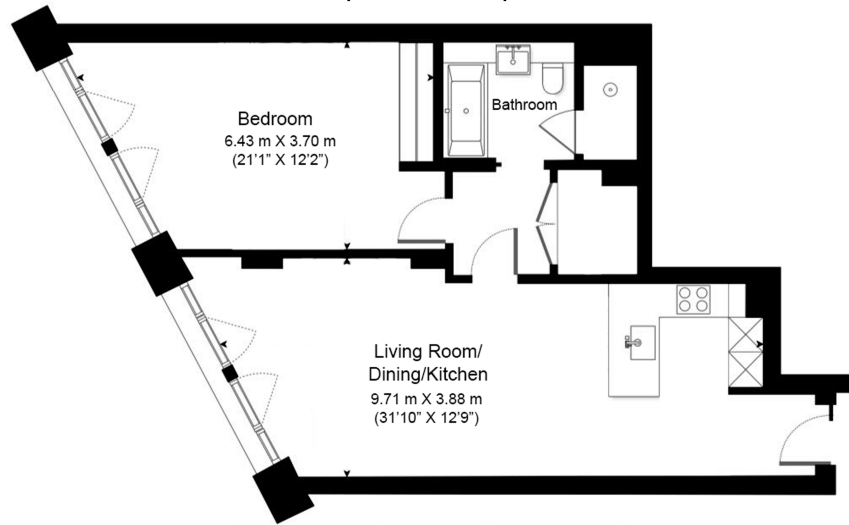


Lincoln Square, 18 Portugal Street, WC2A

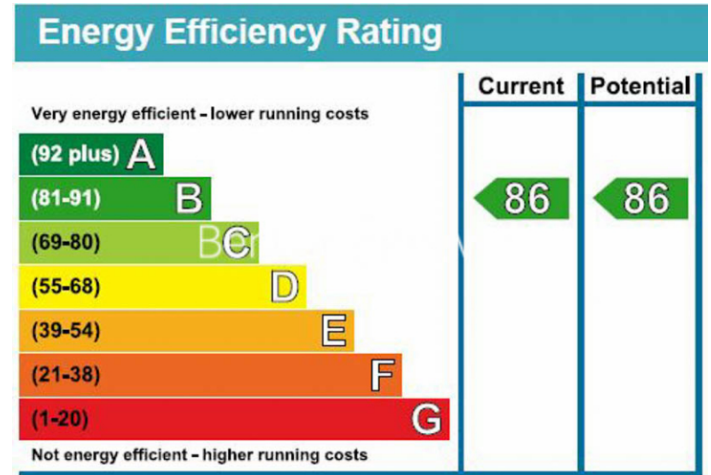
£1,200 per week, £5,200 per month + fees

www.benhams.com

Total Gross Internal Area
73 Sq/m - 782 Sq/ft



Floor Plan measurements are approximate and are for illustrative purposes only. While we do not doubt the floor plans accuracy, we make no guarantee, warranty or representation as to the accuracy and completeness of the floor plan.



London branches open six days a week Mon - Sat

Canary Wharf | City | Colindale | Dartmouth Park | Ealing | Fulham
Hammersmith | Hampstead | Highgate | Hyde Park | Kensington | Kew
Knightsbridge | Nine Elms | Shoreditch | Southall | Surrey Quays
Wapping | Wembley | White City | Woolwich

International offices

China | Hong Kong SAR | India | Indonesia | Israel | Malaysia | Middle East | Pakistan
Qatar | Singapore | South Africa | Thailand | Turkey

