



Benham & Reeves

The Tower, 1 St George Wharf, SW8

£1,500 per week, £6,500 per month + fees

 2 Bedrooms  2 Bathrooms  Furnished

A spacious, technically rich 37th floor apartment with direct River views of Central London and stunning amenities. Centrally located on the Southwest Banks of the Thames and close to Vauxhall Underground Station (Victoria Line).

Please [click here](#) for full detail

Property features

37th floor | Two bedrooms | Two bathrooms | Air cooling | River views | EPC-B | 24 hour concierge | Swimming pool | Gym | Vauxhall and Nine Elms tube station

For more information about this property, please call our Nine Elms branch on

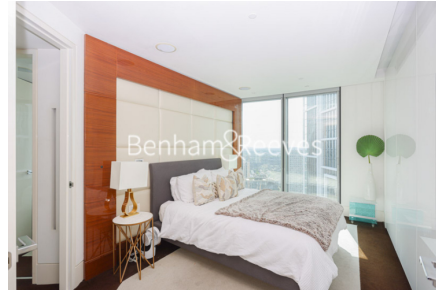
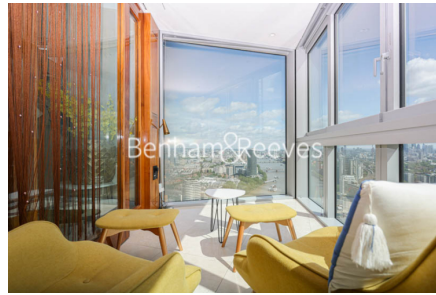
020 3282 3700

Redress & Client Money Protection :

Benham and Reeves are members of The Property Ombudsman redress scheme and have Client Money protection with ARLA Propertymark. You can find more information on our website at <https://www.benhams.com/membership/>



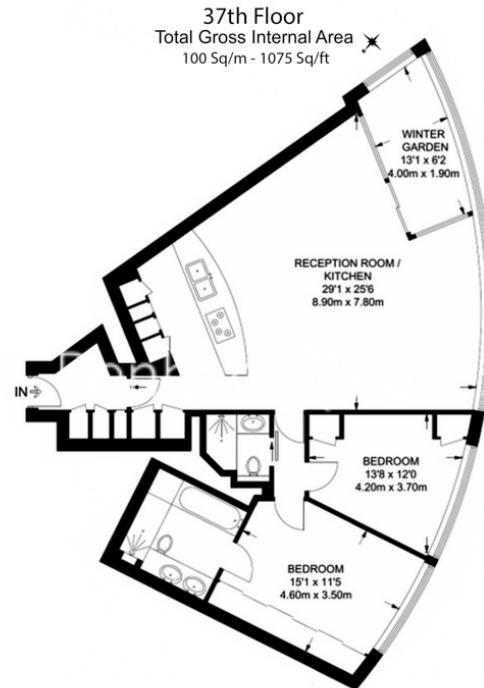
Benham & Reeves



The Tower, 1 St George Wharf, SW8

£1,500 per week, £6,500 per month + fees

www.benhams.com



Floor Plan measurements are approximate and are for illustrative purposes only. While we do not doubt the floor plans accuracy, we make no guarantee, warranty or representation as to the accuracy and completeness of the floor plan.

London branches open six days a week Mon - Sat

Canary Wharf | City | Colindale | Dartmouth Park | Ealing | Fulham
Hammersmith | Hampstead | Highgate | Hyde Park | Kensington | Kew
Knightsbridge | Nine Elms | Shoreditch | Southall | Surrey Quays
Wapping | Wembley | White City | Woolwich

International offices

China | Hong Kong SAR | India | Indonesia | Israel | Malaysia | Middle East | Pakistan
Qatar | Singapore | South Africa | Thailand | Turkey



Benham & Reeves