



Benham & Reeves

St. George's Court Brompton Road SW3

£875 per week, £3,792 per month + fees

 2 Bedrooms  2 Bathrooms  Furnished

A superb 637 sq ft TWO-BEDROOM apartment in the popular ST. GEORGE'S COURT. This newly-refurbished property is situated in fashionable Brompton Cross - just a short walk from SOUTH KENSINGTON STATION and designer boutiques, trendy restaurants & bars. HOT WATER & HEATING included.

Please [click here](#) for full detail

Property features

2 Bedrooms | 2 Bathrooms | Daytime Porter | Hot Water & Heating Incl. | 637 sq ft | EPC-C | Furnished | Prime South Kensington Location | Close to Walton Street and Harrods | Nearby South Kensington & Sloane Square Tube Stations

For more information about this property, please call our Knightsbridge branch on

020 7581 2112

Redress & Client Money Protection :

Benham and Reeves are members of The Property Ombudsman redress scheme and have Client Money protection with ARLA Propertymark. You can find more information on our website at <https://www.benhams.com/membership/>



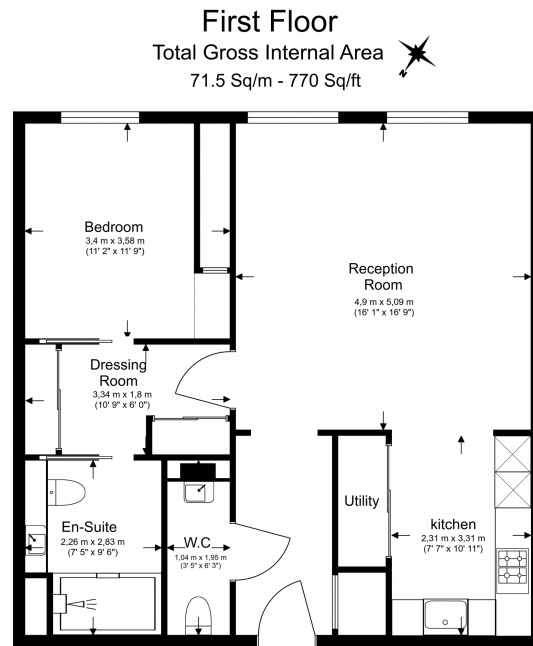
Benham & Reeves



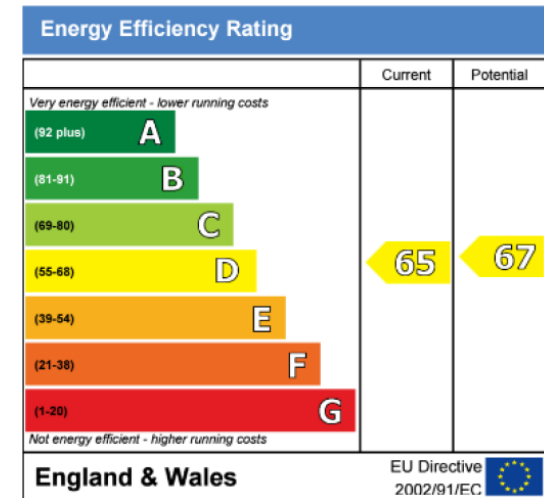
St. George's Court Brompton Road SW3

£875 per week, £3,792 per month + fees

www.benhams.com



Floor Plan measurements are approximate and are for illustrative purposes only. While we do not doubt the floor plans accuracy, we make no guarantee, warranty or representation as to the accuracy and completeness of the floor plan.



London branches open six days a week Mon - Sat

Canary Wharf | City | Colindale | Dartmouth Park | Ealing | Fulham
Hammersmith | Hampstead | Highgate | Hyde Park | Kensington | Kew
Knightsbridge | Nine Elms | Shoreditch | Southall | Surrey Quays
Wapping | Wembley | White City | Woolwich



International offices

China | Hong Kong SAR | India | Indonesia | Qatar | Malaysia | Middle East | Pakistan
Singapore | South Africa | Thailand | Turkey

Benham & Reeves