



# Greenleaf Walk, Southall, UB1

Asking Price: £320,000

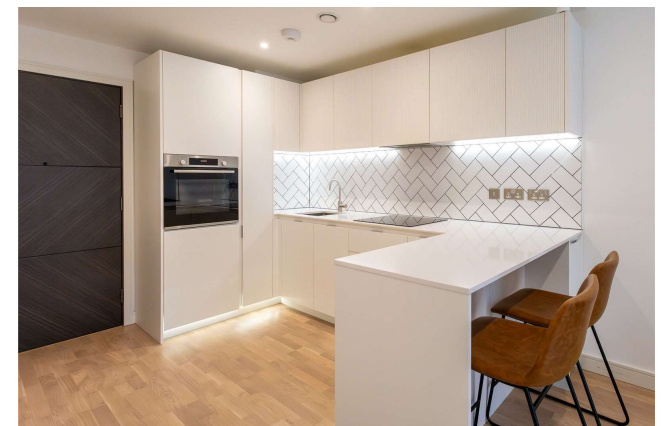
Benham  
& Reeves

# Greenleaf Walk, Southall, UB1

 Studio  1 Bathroom (s)  Leasehold

**\*\*Right To Park Included\*\*** An elegant studio apartment in the prestigious The Green Quarter development, built by the esteemed Berkeley Group. Approximately 425 square feet, the well-kept apartment has an open-concept living area with direct access to a private balcony with views of the beautifully landscaped gardens, and a custom-designed kitchen with integrated appliances. The tastefully designed three-piece bathroom, fitted wardrobes, and carpeting are all features of the well-organized bedroom. A video entry system, resident-only gardens, and a utility cupboard with plenty of storage are additional features of the property.

The Green Quarter in West London is one of the most ambitious biodiverse residential projects in the UK – a transformed landscape with wetlands, parks, community areas, and acres of green open spaces. Residents at this sustainable, unique and nature-rich place can enjoy beautiful gardens and community areas. Exclusive on-site facilities include a fully equipped gym, private cinema, meeting room, lounge, playground, padel court, bike hire scheme, 24-hour concierge, community shops - and much more to come, including a swimming pool. Situated conveniently in zone 4, adjacent to the Southall Crossrail station on the Elizabeth line, providing fast and easy access to Central London and to Heathrow Airport.

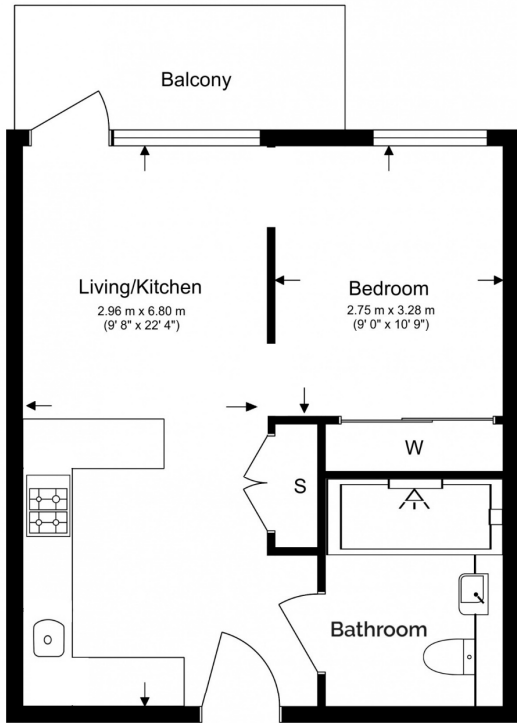




## Property Features:

- Stylish Studio Apartment
- Second Floor
- 425 Square Feet (Approx.)
- Private Balcony
- Concierge Desk
- Resident Only Gym, Screening Room & Co-Working Space
- Southall Station (Elizabeth Line)
- Right To Park Included

Total Gross Internal Area  
39.5 Sq/m - 425 Sq/ft



Energy Efficiency Rating		
	Current	Potential
<i>Very energy efficient - lower running costs</i>		
(92+) <b>A</b>		
(81-91) <b>B</b>	<b>84</b>	<b>84</b>
(69-80) <b>C</b>		
(55-68) <b>D</b>		
(39-54) <b>E</b>		
(21-38) <b>F</b>		
(1-20) <b>G</b>		
<i>Not energy efficient - higher running costs</i>		
<b>England, Scotland &amp; Wales</b>	EU Directive 2002/91/EC	

Floor Plan measurements are approximate and are for illustrative purposes only. While we do not doubt the floor plans accuracy, we make no guarantee, warranty or representation as to the accuracy and completeness of the floor plan.

## Terms & Conditions:

These particulars are for guidance purposes only and do not form part of an offer or contract.

Asking Price:	£320,000
Tenure:	Leasehold Expires 31/12/3018 Approximately 994 Years Remaining
Ground Rent:	£150.00 (per annum) for the year 2024
Service Charge:	£1,014.00 (per annum) for the year 2024
Anticipated Rent:	£1,450.00 pcm Approx. 5.4% Yield

## Viewings:

All viewings are by appointment only through our Ealing Office.

Our reference: BEA240168

T: 020 8280 0140

E: [ealing.sales@benhams.com](mailto:ealing.sales@benhams.com)

W: [www.benhams.com](http://www.benhams.com)

Disclaimer: These particulars are for guidance purposes only and do not form part of an offer or contract. Whilst care has been taken in their preparation, Benham and Reeves or the vendor shall not be held responsible for any inaccuracies. You should not rely on statements by Benham and Reeves Ltd in the particulars or by word of mouth or in writing as being factually accurate about the property, its condition or its value. Any areas, measurements or distances are approximate. The text, photographs and plans are for guidance only. The photographs appearing in these particulars show only certain parts of the property at the time when the photographs were taken. It should not be assumed that the property has all or any of the necessary planning permission, building regulation consent approval or other required consents for its previous, present or future intended usage. Any intending purchasers must satisfy themselves by inspection or by taking appropriate professional advice. Benham and Reeves Ltd has not rested any of the equipment, fittings or facilities.

London | Canary Wharf | City | Colindale | Dartmouth Park | Ealing | Fulham | Hampstead  
Hammersmith | Highgate | Hyde Park | Kensington | Kew | Knightsbridge | Nine Elms  
Surrey Quays | Shoreditch | Wembley | Wapping | White City | Woolwich

International | China | Hong Kong | India | Israel | Malaysia | Middle East | Pakistan  
Singapore | South Africa | Turkey

