



# Building 45, Hopton Road, Royal Arsenal, SE18

Asking Price: £675,000



# Hopton Road, Royal Arsenal, SE18

 3 Bedroom (s)  2 Bathroom (s)  Leasehold

A spacious three bedroom, two bathroom duplex penthouse apartment is located in Building 45, Royal Arsenal Riverside. The flat is situated on the 4th and 5th floors of this contemporary building and spans an approximate 1357 square feet. This fabulous apartment comprises an open-plan living room with a fitted kitchen with integrated appliances and a generous roof terrace. The main bedroom has an en-suite shower room and there are two additional well-proportioned double bedrooms and a modern 3-piece family bathroom. Additional benefits include wooden flooring in the living room.

Residents of Royal Arsenal Riverside are serviced by a host of amenities including residents' gym and concierge as well as being positioned within walking distance of the River Thames.

Marks and Spencer's occupies the commercial unit below the development and there is large Tesco supermarket a short walk away. A bustling high street with chain and independent shops, restaurants, health facilities including a pharmacy and GP are also close by.



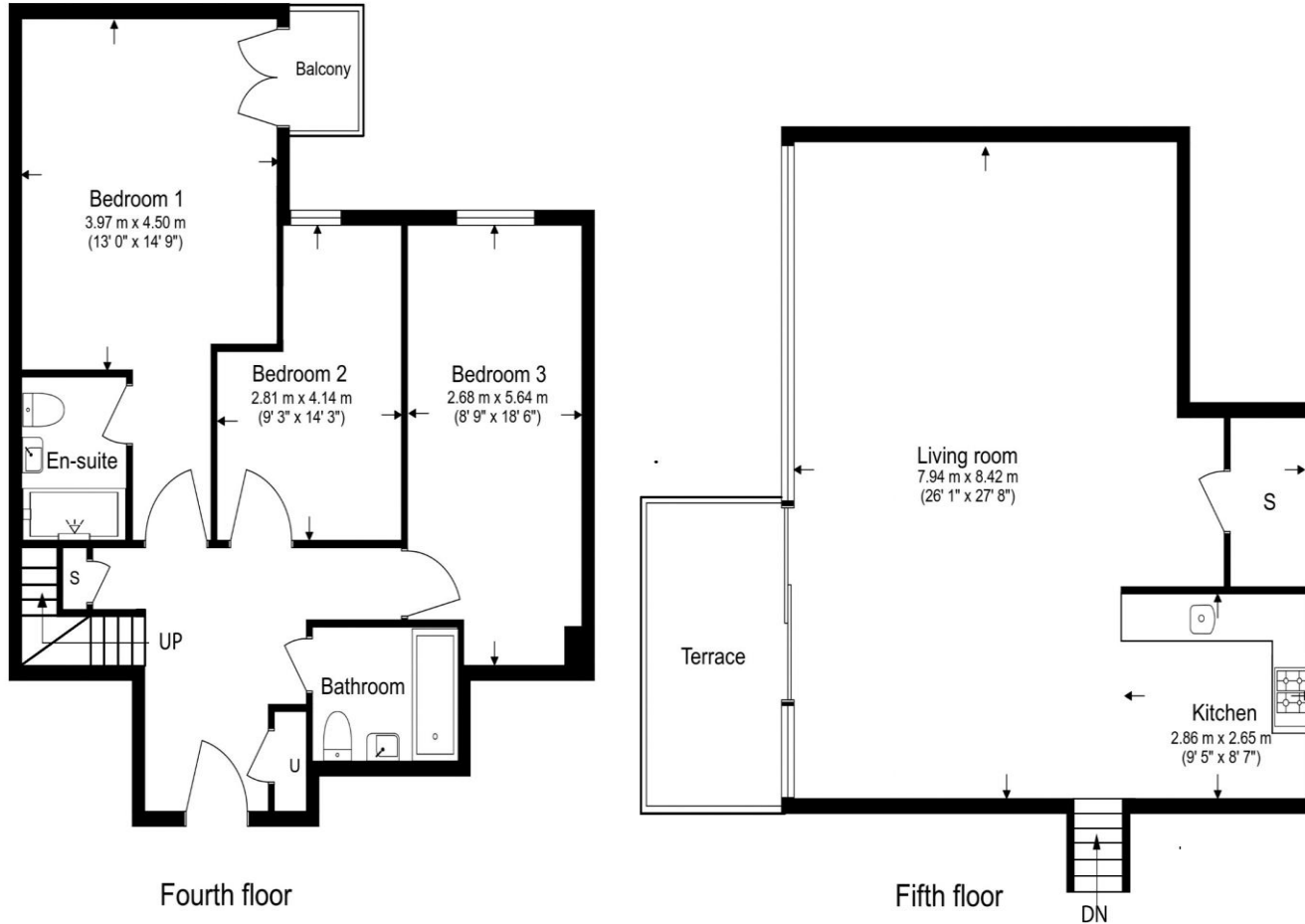


## Property Features:

- Chain Free
- Three Double Bedrooms
- Two Bathrooms
- 4th and 5th floor
- 1357 Square Feet (Approx.)
- Open Plan Kitchen
- Allocated Parking
- Residents' Gym and 24-Hour Concierge
- On-Site Crossrail Station
- Woolwich Overground and DLR Station



Total Gross Internal Area  
126.1 Sq/m - 1,357 Sq/ft



Energy Efficiency Rating		
	Current	Potential
Very energy efficient - lower running costs		
(92+) <b>A</b>		
(81-91) <b>B</b>		
(69-80) <b>C</b>	<b>80</b>	<b>80</b>
(55-68) <b>D</b>		
(39-54) <b>E</b>		
(21-38) <b>F</b>		
(1-20) <b>G</b>		
Not energy efficient - higher running costs		
<b>England, Scotland &amp; Wales</b>	EU Directive 2002/91/EC	

## Terms & Conditions:

These particulars are for guidance purposes only and do not form part of an offer or contract.

Asking Price:	£675,000
Tenure:	Leasehold Expires 22/01/3000 Approximately 975 Years Remaining
Ground Rent:	£250.00 (per annum) for the year 2024
Service Charge:	£6,000.00 (per annum) for the year 2024
Anticipated Rent:	£2,800.00 pcm Approx. 5 % Yield

## Viewings:

All viewings are by appointment only through our Woolwich Office.

Our reference: WOO240108

T: 020 8051 0700

E: [woolwich.sales@benhams.com](mailto:woolwich.sales@benhams.com)

W: [www.benhams.com](http://www.benhams.com)

Disclaimer: These particulars are for guidance purposes only and do not form part of an offer or contract. Whilst care has been taken in their preparation, Benham and Reeves or the vendor shall not be held responsible for any inaccuracies. You should not rely on statements by Benham and Reeves Ltd in the particulars or by word of mouth or in writing as being factually accurate about the property, its condition or its value. Any areas, measurements or distances are approximate. The text, photographs and plans are for guidance only. The photographs appearing in these particulars show only certain parts of the property at the time when the photographs were taken. It should not be assumed that the property has all or any of the necessary planning permission, building regulation consent approval or other required consents for its previous, present or future intended usage. Any intending purchasers must satisfy themselves by inspection or by taking appropriate professional advice. Benham and Reeves Ltd has not rested any of the equipment, fittings or facilities.

London | Canary Wharf | City | Colindale | Dartmouth Park | Ealing | Fulham | Hampstead  
Hammersmith | Highgate | Hyde Park | Kensington | Kew | Knightsbridge | Nine Elms  
Surrey Quays | Shoreditch | Wembley | Wapping | White City | Woolwich

International | China | Hong Kong | India | Israel | Malaysia | Middle East | Pakistan  
Singapore | South Africa | Turkey

