



Duke of Wellington Avenue, Woolwich, SE18

Asking Price: £585,000



Duke of Wellington Avenue, Woolwich, SE18

 2 Bedroom (s)  1 Bathroom (s)  Leasehold

A spacious two bedroom apartment located in Judde House, Royal Arsenal Riverside. Situated on the 11th floor and spanning an approximate 674 square feet, this fabulous apartment comprises an open plan living room with a modern kitchen with integrated appliances. Two well-proportioned double bedrooms and a modern 3-piece family bathroom. Additional benefits include wooden flooring in the living room. The flat also benefits from additional storage.

Residents of Royal Arsenal Riverside are serviced by a host of amenities including residents' gym, swimming pool, cinema and concierge as well as being positioned within walking distance of the River Thames. Marks and Spencer's occupies the commercial unit below the development and there is large Tesco supermarket a short walk away.

A bustling high street with chain and independent shops, restaurants, health facilities including a pharmacy and GP are also close by.

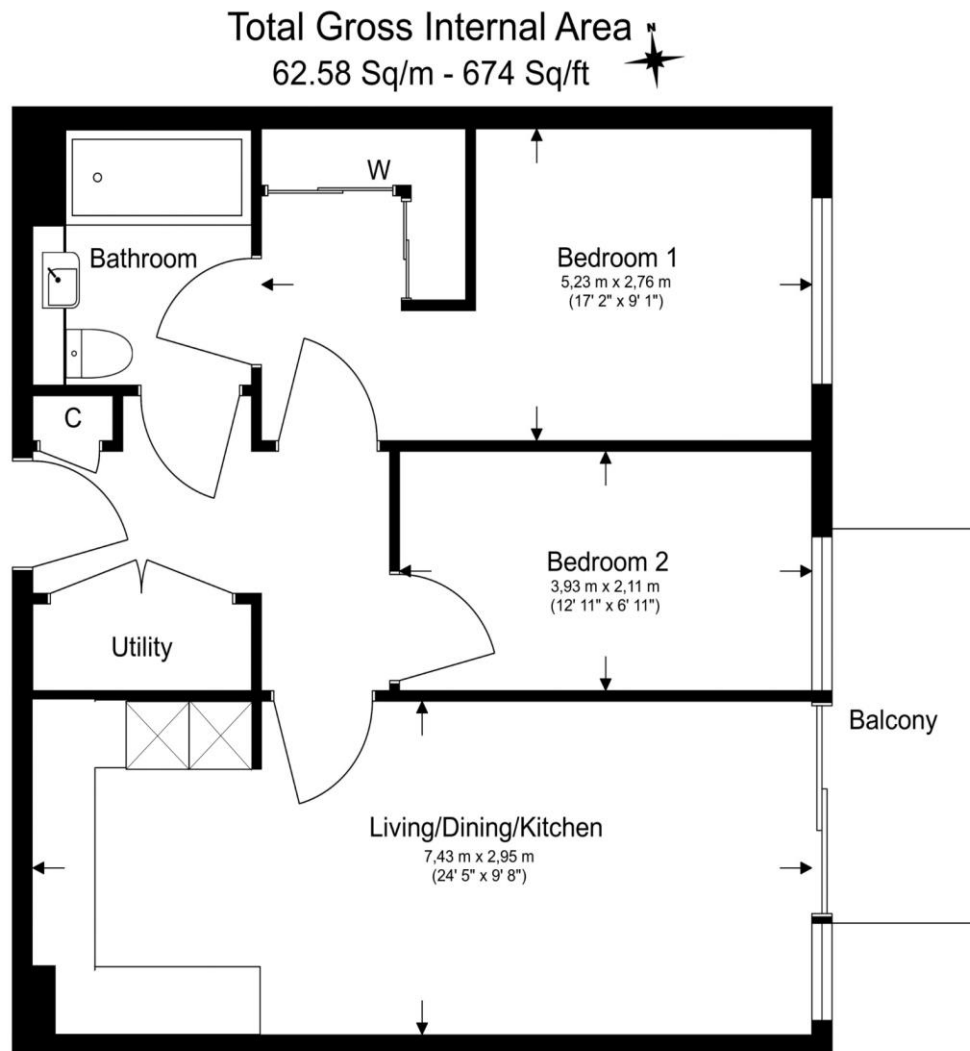




Property Features:

- Two Double Bedrooms
- One Bathroom
- 11th Floor
- 674 Square Feet (Approx.)
- Open Plan Kitchen
- Balcony with River View
- Cinema and Swimming Pool
- Residents' Gym and 24 Hour Concierge
- On Site Crossrail Station
- Woolwich Overground and DLR Station





Floor Plan measurements are approximate and are for illustrative purposes only. While we do not doubt the floor plans accuracy, we make no guarantee, warranty or representation as to the accuracy and completeness of the floor plan.

Energy Efficiency Rating		
	Current	Potential
<i>Very energy efficient - lower running costs</i>		
(92+) A		
(81-91) B	84	84
(69-80) C		
(55-68) D		
(39-54) E		
(21-38) F		
(1-20) G		
<i>Not energy efficient - higher running costs</i>		
England, Scotland & Wales	EU Directive 2002/91/EC	

Terms & Conditions:

These particulars are for guidance purposes only and do not form part of an offer or contract.

Asking Price: £585,000

Tenure: Leasehold
Expires 01/01/3018
Approximately 994 Years Remaining

Ground Rent: £425 (per annum approx.) for the year 2023

Service Charge: £2809 (per annum approx.) for the year 2023

Viewings:

All viewings are by appointment only through our Woolwich Office.

Our reference: SUR230034

T: 020 7740 3050

E: woolwich.sales@benhams.com

W: www.benhams.com

Disclaimer: These particulars are for guidance purposes only and do not form part of an offer or contract. Whilst care has been taken in their preparation, Benham and Reeves or the vendor shall not be held responsible for any inaccuracies. You should not rely on statements by Benham and Reeves Ltd in the particulars or by word of mouth or in writing as being factually accurate about the property, its condition or its value. Any areas, measurements or distances are approximate. The text, photographs and plans are for guidance only. The photographs appearing in these particulars show only certain parts of the property at the time when the photographs were taken. It should not be assumed that the property has all or any of the necessary planning permission, building regulation consent approval or other required consents for its previous, present or future intended usage. Any intending purchasers must satisfy themselves by inspection or by taking appropriate professional advice. Benham and Reeves Ltd has not rested any of the equipment, fittings or facilities.

London

Canary Wharf
City
Colindale
Dartmouth Park
Ealing
Fulham
Hammersmith

Hampstead
Highgate
Hyde Park
Kensington
Kew
Knightsbridge
Nine Elms

Shoreditch
Surrey Quays
Wapping
White City
Woolwich

International

China
Hong Kong
India
Malaysia
Middle East
Singapore
South Africa

