



Garford Street, Westferry, E14

Price Reduced to: £425,000

 Benham
& Reeves

Garford Street, Westferry, E14

 2 Bedroom (s)  1 Bathroom (s)  Leasehold

A well-proportioned two bedroom apartment situated on the first floor of Kelly Court, Premier Place. Spanning approximately 788 square feet this apartment consists of a principal double bedroom with fitted wardrobes, a second double bedroom, a separate fully fitted kitchen, a family bathroom, storage cupboard to the hallway and a spacious reception room with a Juliette balcony.

The apartment has wooden flooring throughout and includes an allocated parking space. The development also has a lift, concierge and also comes with a long lease making it perfect for someone looking to live in or invest.

Premier Place is located within close proximity to Westferry DLR, the River Thames, West India Quay, Narrow Street and Canary Wharf which all offer an array of restaurants, bars and shopping facilities.

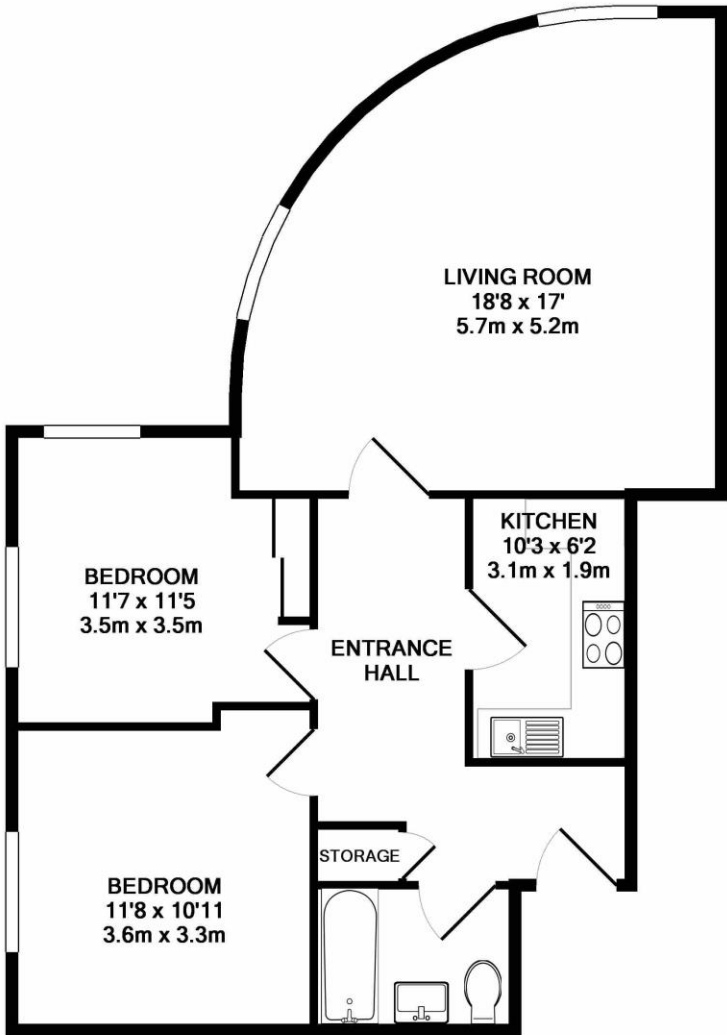




Property Features:

- 2 bedrooms
- 1 bathroom
- 1st Floor
- Spacious Living Room
- Superb location
- Lift
- Parking
- Concierge
- Long lease
- Westferry DLR Zone 2





Energy Efficiency Rating		
	Current	Potential
<i>Very energy efficient - lower running costs</i>		
(92+) A		
(81-91) B		
(69-80) C	69	75
(55-68) D		
(39-54) E		
(21-38) F		
(1-20) G		
<i>Not energy efficient - higher running costs</i>		
England, Scotland & Wales	EU Directive 2002/91/EC	

TOTAL APPROX. FLOOR AREA 788 SQ.FT. (73.2 SQ.M.)

Whilst every attempt has been made to ensure the accuracy of the floor plan contained here, measurements of doors, windows, rooms and any other items are approximate and no responsibility is taken for any error, omission, or mis-statement. This plan is for illustrative purposes only and should be used as such by any prospective purchaser. The services, systems and appliances shown have not been tested and no guarantee as to their operability or efficiency can be given

Made with Metropix ©2017

Terms & Conditions:

These particulars are for guidance purposes only and do not form part of an offer or contract.

Price Reduced £425,000

to:

Tenure: Leasehold
Expires 17/06/2995
Approximately 971 Years Remaining

Ground Rent: Peppercorn

Service Charge: £4,386 approx. (per annum)
2024

Anticipated Rent: £1,775.00 pcm
Approx. 5.0% Yield

Viewings:

All viewings are by appointment only through our Canary Wharf Office.

Our reference: KEN220100

T: 020 8036 3200

E: canarywharf.sales@benhams.com

W: www.benhams.com

Disclaimer: These particulars are for guidance purposes only and do not form part of an offer or contract. Whilst care has been taken in their preparation, Benham and Reeves or the vendor shall not be held responsible for any inaccuracies. You should not rely on statements by Benham and Reeves Ltd in the particulars or by word of mouth or in writing as being factually accurate about the property, its condition or its value. Any areas, measurements or distances are approximate. The text, photographs and plans are for guidance only. The photographs appearing in these particulars show only certain parts of the property at the time when the photographs were taken. It should not be assumed that the property has all or any of the necessary planning permission, building regulation consent approval or other required consents for its previous, present or future intended usage. Any intending purchasers must satisfy themselves by inspection or by taking appropriate professional advice. Benham and Reeves Ltd has not rested any of the equipment, fittings or facilities.

London | Canary Wharf | City | Colindale | Dartmouth Park | Ealing | Fulham | Hampstead
Hammersmith | Highgate | Hyde Park | Kensington | Kew | Knightsbridge | Nine Elms
Surrey Quays | Shoreditch | Wembley | Wapping | White City | Woolwich

International | China | Hong Kong | India | Israel | Malaysia | Middle East | Pakistan
Singapore | South Africa | Turkey

