



Merino Gardens, Wapping, E1W

Price Reduced to: £1,150,000

Benham
& Reeves

Merino Gardens, Wapping, E1W

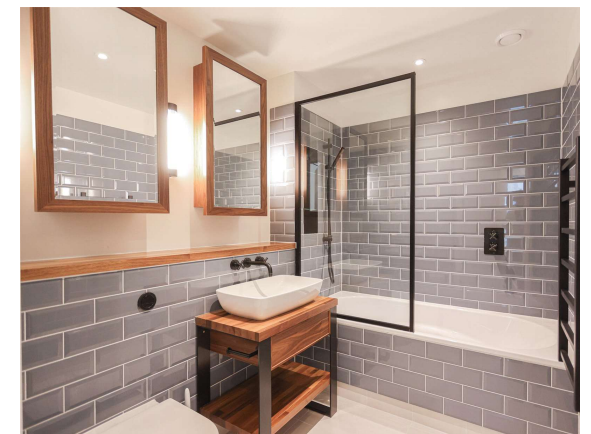
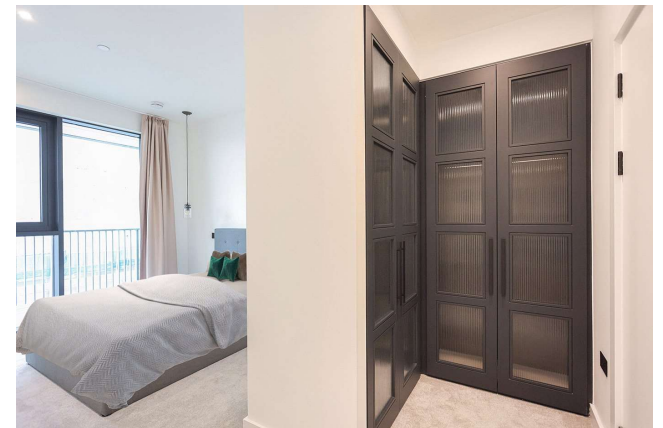
 2 Bedroom (s)  2 Bathroom (s)  Leasehold

Nestled in a striking new apartment building near Tower Bridge, at the heart of Wapping, this stunning 2 bedrooms flat on the 13th floor is impeccably presented, showcasing open-plan living with floor to ceiling living room windows that flood the space with natural light and provide breathtaking city views at night.

The apartment boasts an open-plan reception room with access to a west facing balcony, complemented by wooden floors, plush carpets, comfort cooling and a modern fully equipped kitchen featuring Bosch appliances. Two generously sized double bedrooms, with the principal en-suite bedroom offering built-in storage, a contemporary bathroom and additional built-in storage within the utility cupboard, complete the sophisticated layout.

Conveniently located adjacent to Wapping Overground station, this property is perfectly positioned for seamless travel to Bank, Liverpool Street, and London Bridge, facilitating swift and easy access to Central London.

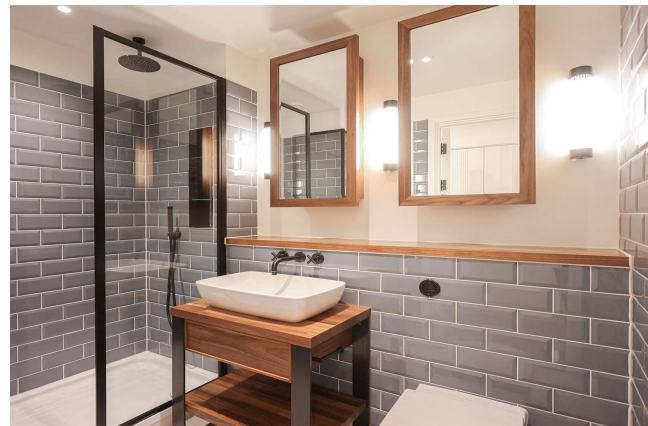
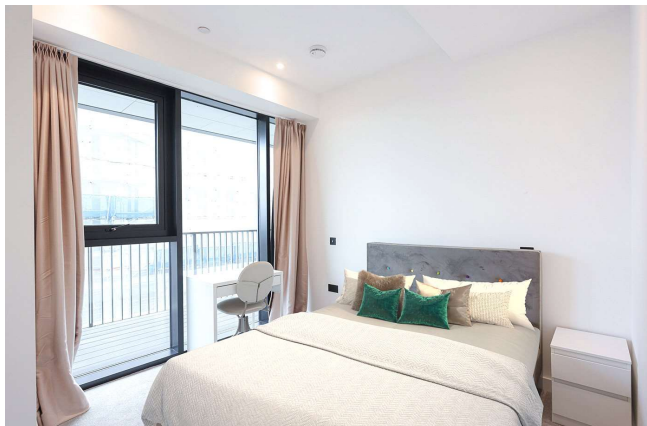
Please note that this property is currently rented, photographs were taken prior to the current tenancy

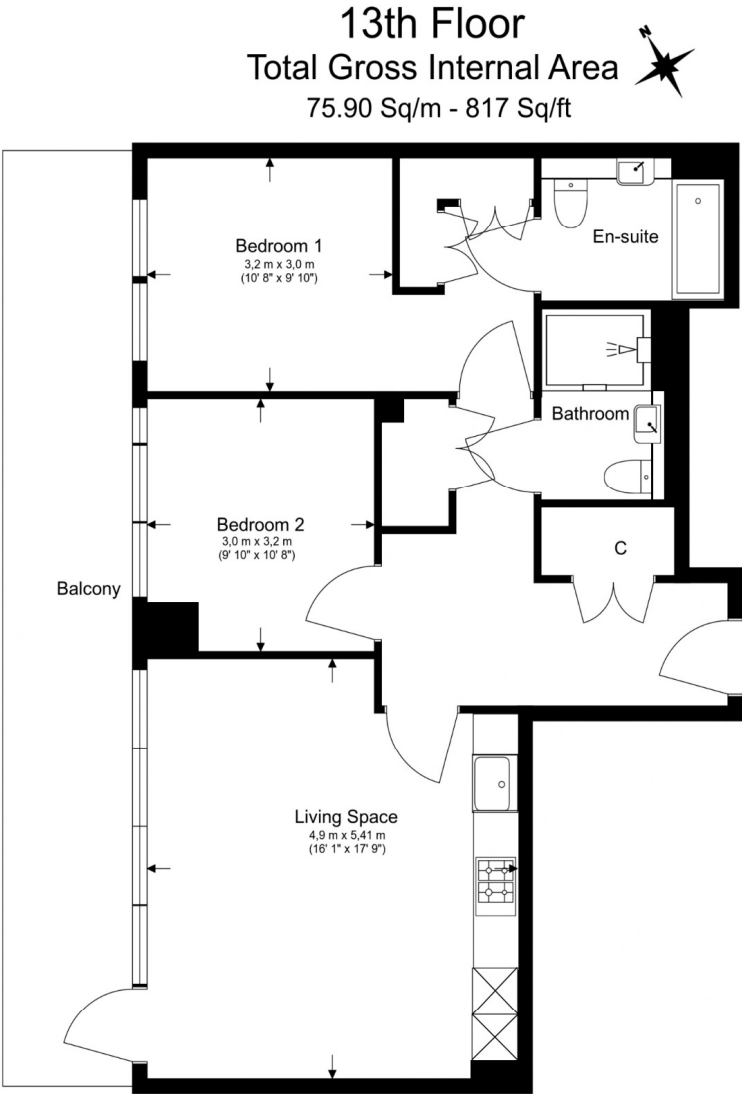




Property Features:

- Two bedrooms
- Two bathrooms
- 817 square feet
- 13th floor
- Open-plan living area
- West facing Balcony
- Residents' lounge
- 24 hours Concierge
- Squash Court
- Virtual Golf Course
- SPA
- Gym
- Screening Room





Energy Efficiency Rating		
	Current	Potential
<i>Very energy efficient - lower running costs</i>		
(92+) A		
(81-91) B	84	84
(69-80) C		
(55-68) D		
(39-54) E		
(21-38) F		
(1-20) G		
<i>Not energy efficient - higher running costs</i>		
England, Scotland & Wales	EU Directive 2002/91/EC	

Floor Plan measurements are approximate and are for illustrative purposes only. While we do not doubt the floor plans accuracy, we make no guarantee, warranty or representation as to the accuracy and completeness of the floor plan.

Terms & Conditions:

These particulars are for guidance purposes only and do not form part of an offer or contract.

Price Reduced £1,150,000
to:

Tenure: Leasehold
Expires 24/06/2988
Approximately 963 Years Remaining

Ground Rent: £552.00 (per annum)
Review date: every 21st anniversary of that date.

Service Charge: £5,022.00 (per annum)
Oct 2023 - Sept 2024

Anticipated Rent: £4,000.00 pcm
Approx. 4.2% Yield

Viewings:

All viewings are by appointment only through our City Office.

Our reference: CWH230367

T: 020 7213 9700

E: city.sales@benhams.com

W: www.benhams.com

Disclaimer: These particulars are for guidance purposes only and do not form part of an offer or contract. Whilst care has been taken in their preparation, Benham and Reeves or the vendor shall not be held responsible for any inaccuracies. You should not rely on statements by Benham and Reeves Ltd in the particulars or by word of mouth or in writing as being factually accurate about the property, its condition or its value. Any areas, measurements or distances are approximate. The text, photographs and plans are for guidance only. The photographs appearing in these particulars show only certain parts of the property at the time when the photographs were taken. It should not be assumed that the property has all or any of the necessary planning permission, building regulation consent approval or other required consents for its previous, present or future intended usage. Any intending purchasers must satisfy themselves by inspection or by taking appropriate professional advice. Benham and Reeves Ltd has not rested any of the equipment, fittings or facilities.

London | Canary Wharf | City | Colindale | Dartmouth Park | Ealing | Fulham | Hampstead
Hammersmith | Highgate | Hyde Park | Kensington | Kew | Knightsbridge | Nine Elms
Surrey Quays | Shoreditch | Wembley | Wapping | White City | Woolwich

International | China | Hong Kong | India | Israel | Malaysia | Middle East | Pakistan
Singapore | South Africa | Turkey

