



# Radnor Terrace, Kensington, W14

Asking Price: £1,595,000

Benham  
& Reeves



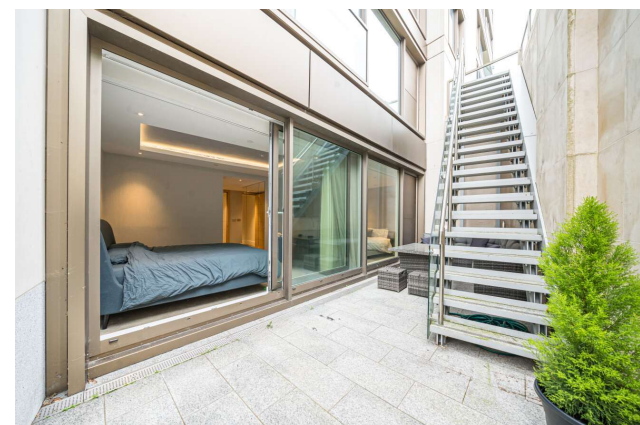
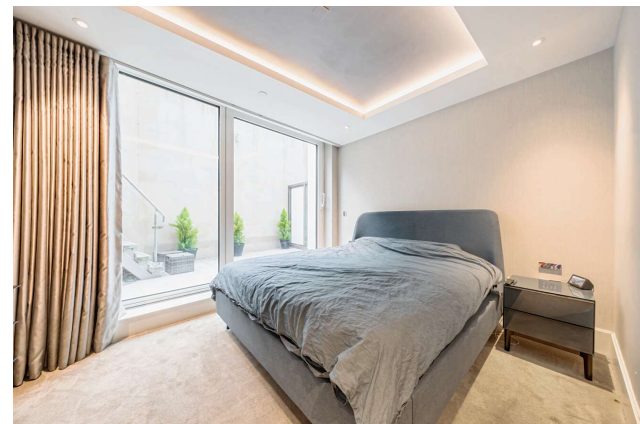
# Radnor Terrace, Kensington, W14

 2 Bedroom (s)  2 Bathroom (s)  Leasehold

This contemporary two bedroom, two bathroom apartment offers a sophisticated living experience spread across the ground and lower ground floors of a modern development. Boasting a generous 1296 square feet (approx.) of living space, the property features a spacious open-plan living room with floor-to-ceiling windows, seamlessly integrated with a kitchen equipped with top-of-the-range Miele appliances. The bedrooms are situated on the lower ground floor, each with an en-suite bathroom and access to a private terrace. Additionally, there is a separate guest WC accessible from the hallway on the ground floor, along with ample storage options including a utility cupboard complete with a washer/dryer. This duplex layout epitomizes the sought-after London city lifestyle.

Finished to impeccable standards, the apartment showcases elegant wooden flooring, underfloor heating, and comfort cooling throughout. Residents enjoy exclusive access to a range of luxurious amenities, including a swimming pool, gym, sauna, steam room, and cinema.

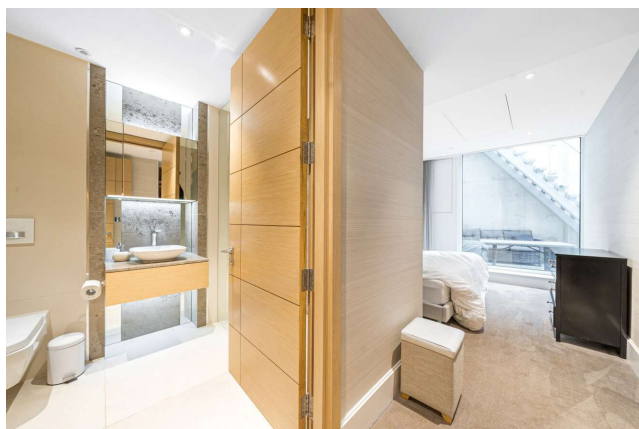
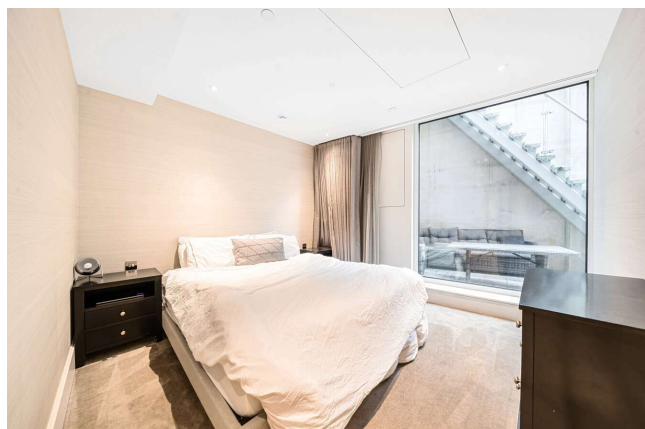
Benefiting from a 24-hour concierge and security service, residents also have access to exclusive leisure and spa facilities, enhancing the premium living experience. Situated in close proximity to Holland Park and within easy reach of local shops and restaurants, this property epitomizes luxury living in London. Excellent public transport links, including nearby Kensington High Street underground station (Circle and District lines – Zone 1) and Kensington (Olympia) Overground station (Zone 2), as well as convenient access to the A4/M4, ensure seamless connectivity to Heathrow Airport and beyond.





## Property Features:

- Two Bedrooms
- Two En-Suites
- Guest Cloakroom
- Private Terrace
- 1296 Square Feet (Approx.)
- Gym, Swimming Pool, Cinema Room, Communal Gardens & 24-Hour Porter
- Kensington Olympia Underground Station (District and Overground Line – 0.2 miles)

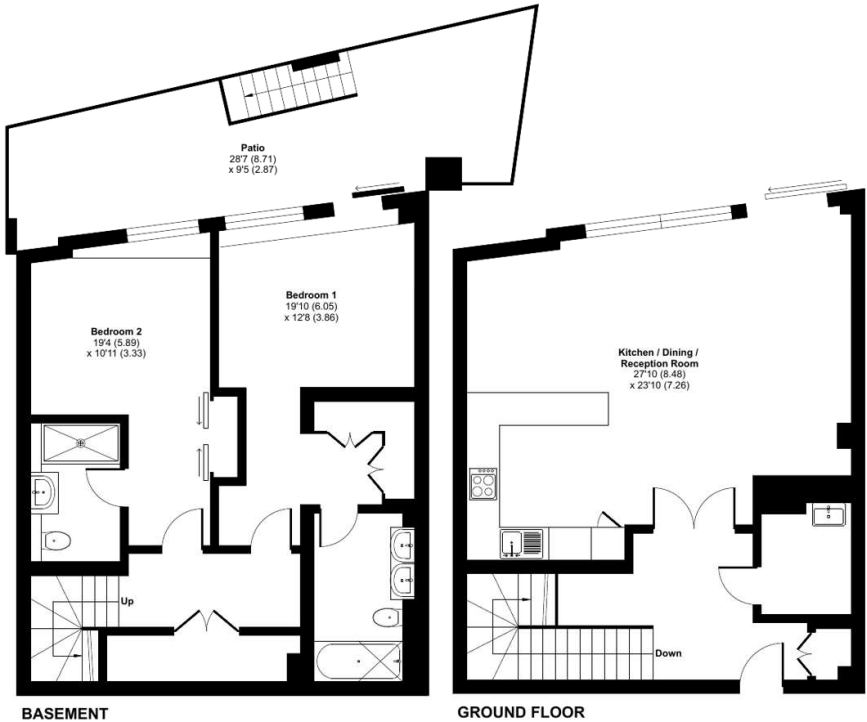


# Radnor Terrace, Kensington, W14



## Radnor Terrace, London, W14

Approximate Area = 1296 sq ft / 120.4 sq m  
 For identification only - Not to scale



Energy Efficiency Rating		
	Current	Potential
<i>Very energy efficient - lower running costs</i>		
(92+) <b>A</b>		
(81-91) <b>B</b>		
(69-80) <b>C</b>	<b>80</b>	<b>80</b>
(55-68) <b>D</b>		
(39-54) <b>E</b>		
(21-38) <b>F</b>		
(1-20) <b>G</b>		
<i>Not energy efficient - higher running costs</i>		
<b>England, Scotland &amp; Wales</b>	EU Directive 2002/91/EC	



Floor plan produced in accordance with RICS Property Measurement Standards incorporating International Property Measurement Standards (IPMS2 Residential). © nchecom 2024. Produced for Benham & Reeves. REF: 1095969

## Terms & Conditions:

These particulars are for guidance purposes only and do not form part of an offer or contract.

Asking Price: £1,595,000

Tenure: Leasehold  
Expires 28/02/3010  
Approximately 985 Years Remaining

Ground Rent: £970.02 (per annum)  
Review period: 10 years  
Increased by : RPI for the relevant year

Service Charge: £6,970.00 (per annum)  
for the year 2024

## Viewings:

All viewings are by appointment only through our Kensington Office.

Our reference: KEN240045

T: 020 7938 3522

E: [kensington.sales@benhams.com](mailto:kensington.sales@benhams.com)

W: [www.benhams.com](http://www.benhams.com)

Disclaimer: These particulars are for guidance purposes only and do not form part of an offer or contract. Whilst care has been taken in their preparation, Benham and Reeves or the vendor shall not be held responsible for any inaccuracies. You should not rely on statements by Benham and Reeves Ltd in the particulars or by word of mouth or in writing as being factually accurate about the property, its condition or its value. Any areas, measurements or distances are approximate. The text, photographs and plans are for guidance only. The photographs appearing in these particulars show only certain parts of the property at the time when the photographs were taken. It should not be assumed that the property has all or any of the necessary planning permission, building regulation consent approval or other required consents for its previous, present or future intended usage. Any intending purchasers must satisfy themselves by inspection or by taking appropriate professional advice. Benham and Reeves Ltd has not rested any of the equipment, fittings or facilities.

London | Canary Wharf | City | Colindale | Dartmouth Park | Ealing | Fulham | Hampstead  
Hammersmith | Highgate | Hyde Park | Kensington | Kew | Knightsbridge | Nine Elms  
Surrey Quays | Shoreditch | Wembley | Wapping | White City | Woolwich

International | China | Hong Kong | India | Israel | Malaysia | Middle East | Pakistan  
Singapore | South Africa | Turkey

