



Chelsea Vista, The Boulevard, Imperial Wharf, SW6

Asking Price: £700,000



Chelsea Vista, The Boulevard, Imperial Wharf, SW6

 2 Bedroom (s)  2 Bathroom (s)  Leasehold

This stylish apartment, arranged over the 7th floor of this popular development comprises two double bedrooms, a reception room with dining area and floor to ceiling windows leading to a private balcony. There is a separate fully fitted kitchen with integrated appliances. The main bedroom benefits from a walk-in wardrobe, an additional built-in wardrobe and an en-suite shower room. The apartment further benefits from a second bedroom, a family bathroom, a spacious storage cupboard and comfort cooling/warm air heating throughout.

Located on the north bank of the River Thames in SW6 adjacent to Chelsea Harbour, Imperial Wharf is a luxury riverside complex by developers St George with on-site amenities including 24-hour concierge, a residents' gymnasium, Tesco, landscaped gardens and a range of cafes and restaurants. A real local community and all the amenities you could wish for, all set within walking distance of the fabulous King's Road, which provides a variety of cuisines, cafes, bars and boutiques.

The Imperial Wharf rail station is 0.1 miles away and provides quick links to Clapham Junction, Shepherd's Bush (for the Central line and Westfield shopping centre) and Fulham Broadway (District line).





Property Features:

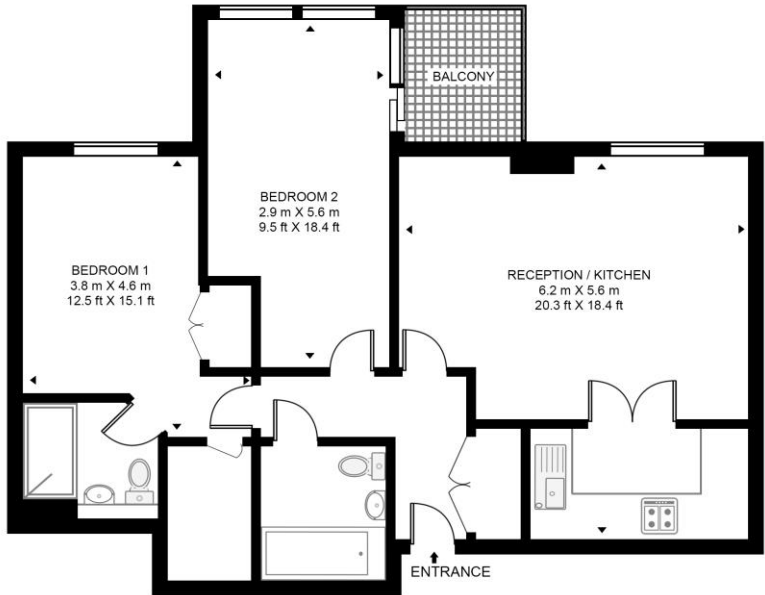
- Two Bedrooms
- Two Bathrooms
- Seventh Floor
- 883 Square Feet (Approx.)
- Private Balcony
- 24 Hour Concierge Service, Residents' Gym
- Communal Garden
- Imperial Wharf Overground Station




Chelsea Vista, The Boulevard, Imperial Wharf, SW6



CHELSEA VISTA, IMPERIAL WHARF
 APPROXIMATE GROSS INTERNAL FLOOR AREA 867 SQ.FT (80.6 SQ.M)



SEVENTH FLOOR

Energy Efficiency Rating		
	Current	Potential
<i>Very energy efficient - lower running costs</i>		
(92+) A		
(81-91) B	81	83
(69-80) C		
(55-68) D		
(39-54) E		
(21-38) F		
(1-20) G		
<i>Not energy efficient - higher running costs</i>		
England, Scotland & Wales	EU Directive 2002/91/EC 	

This floor plan has been defined by the RICS Code of Measurement. This floor plan and all others are for approximate representative purposes only and upon usage is agreed to as such by the client.

Terms & Conditions:

These particulars are for guidance purposes only and do not form part of an offer or contract.

Asking Price:	£700,000
Tenure:	Leasehold Expires 15/12/2998 Approximately 974 Years Remaining
Ground Rent:	£250.00 (per annum) for the year 2024
Service Charge:	£12,500.00 (per annum) for the year 2024
Anticipated Rent:	£3,000.00 pcm Approx. 5.1 % Yield

Viewings:

All viewings are by appointment only through our Imperial Wharf Office.

Our reference: NIN240195

T: 020 3282 3700

E: imperialwharf.sales@benhams.com

W: www.benhams.com

Disclaimer: These particulars are for guidance purposes only and do not form part of an offer or contract. Whilst care has been taken in their preparation, Benham and Reeves or the vendor shall not be held responsible for any inaccuracies. You should not rely on statements by Benham and Reeves Ltd in the particulars or by word of mouth or in writing as being factually accurate about the property, its condition or its value. Any areas, measurements or distances are approximate. The text, photographs and plans are for guidance only. The photographs appearing in these particulars show only certain parts of the property at the time when the photographs were taken. It should not be assumed that the property has all or any of the necessary planning permission, building regulation consent approval or other required consents for its previous, present or future intended usage. Any intending purchasers must satisfy themselves by inspection or by taking appropriate professional advice. Benham and Reeves Ltd has not rested any of the equipment, fittings or facilities.

London | Canary Wharf | City | Colindale | Dartmouth Park | Ealing | Fulham | Hampstead
Hammersmith | Highgate | Hyde Park | Kensington | Kew | Knightsbridge | Nine Elms
Surrey Quays | Shoreditch | Wembley | Wapping | White City | Woolwich

International | China | Hong Kong | India | Israel | Malaysia | Middle East | Pakistan
Singapore | South Africa | Turkey

