



Harbour Reach, The Boulevard, Fulham, SW6

Asking Price: £800,000

 Benham
& Reeves

Harbour Reach, The Boulevard, Fulham, SW6

 2 Bedroom (s)  2 Bathroom (s)  Leasehold

A stylish two bedroom, two bathroom flat set in the award-winning riverside development, Imperial Wharf. Spanning a spacious 965 square feet (approximately), the apartment comprises a reception room with dining area and floor-to-ceiling windows leading to a private balcony facing the river. There is a separate kitchen with built-in appliances which also includes a separate utility room. Both double bedrooms have been fitted with built-in wardrobes and floor-to-ceiling windows, an en-suite shower room to the principal bedroom and an additional family bathroom. The apartment further benefits from comfort cooling/warm air heating, wooden flooring throughout and a right to park space in the underground car park.

Located on the north bank of the River Thames in SW6 adjacent to Chelsea Harbour, Imperial Wharf is a luxury riverside complex by developers St George with on-site amenities including 24-hour concierge, a residents' gym, Tesco, landscaped gardens and a range of cafes and restaurants. A real local community and all the amenities you could wish for, set within walking distance to the fabulous King's Road, which provides a various choice of cuisines, cafes, bars and boutiques.

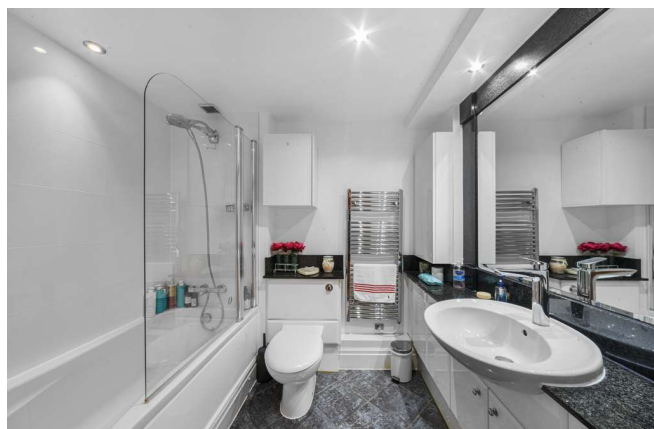
Imperial Wharf rail station is 0.1 miles away and provides quick links to Clapham Junction, Shepherd's Bush (for the Central line and Westfield shopping centre) and Fulham Broadway (District line).





Property Features:

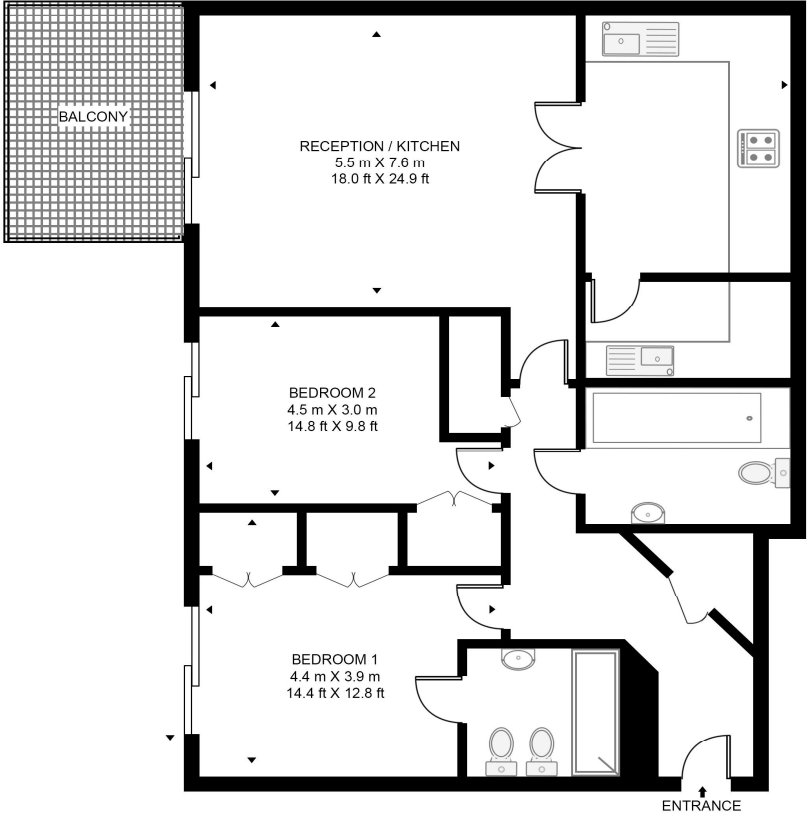
- 2 Bedrooms
- 2 Bathrooms
- 8th Floor
- 965 Square Feet (Approx.)
- Private Balcony
- 24 Hour Concierge Service
- Residential Gym
- Communal Gardens
- Imperial Wharf Station (London Overground Line. Zone 2)



Harbour Reach, The Boulevard, Fulham, SW6



HARBOUR REACH, THE BOULEVARD
 APPROXIMATE GROSS INTERNAL FLOOR AREA 965 SQ.FT (89.7 SQ.M)



EIGHTH FLOOR

Energy Efficiency Rating		
	Current	Potential
<i>Very energy efficient - lower running costs</i>		
(92+) A		
(81-91) B	82	83
(69-80) C		
(55-68) D		
(39-54) E		
(21-38) F		
(1-20) G		
<i>Not energy efficient - higher running costs</i>		
England, Scotland & Wales	EU Directive 2002/91/EC	

This floor plan has been defined by the RICS Code of Measurement. This floor plan and all others are for approximate representative purposes only and upon usage is agreed to as such by the client.

Terms & Conditions:

These particulars are for guidance purposes only and do not form part of an offer or contract.

Asking Price: £800,000

Tenure: Leasehold
Expires 24/12/2998
Approximately 973 Years Remaining

Ground Rent: £250.00 (per annum)
Review Period: 20 years
Next: 2039
Increase: Double

Service Charge: £9,885.41 (per annum) for the year 2025

Anticipated Rent: £3,250.00 pcm
Approx. 4.9% Yield

Viewings:

All viewings are by appointment only through our Nine Elms Office.

Our reference: NIN250065

T: 020 3282 3700

E: nineelms.sales@benhams.com

W: www.benhams.com

Disclaimer: These particulars are for guidance purposes only and do not form part of an offer or contract. Whilst care has been taken in their preparation, Benham and Reeves or the vendor shall not be held responsible for any inaccuracies. You should not rely on statements by Benham and Reeves Ltd in the particulars or by word of mouth or in writing as being factually accurate about the property, its condition or its value. Any areas, measurements or distances are approximate. The text, photographs and plans are for guidance only. The photographs appearing in these particulars show only certain parts of the property at the time when the photographs were taken. It should not be assumed that the property has all or any of the necessary planning permission, building regulation consent approval or other required consents for its previous, present or future intended usage. Any intending purchasers must satisfy themselves by inspection or by taking appropriate professional advice. Benham and Reeves Ltd has not rested any of the equipment, fittings or facilities.

London | Canary Wharf | City | Colindale | Dartmouth Park | Ealing | Fulham | Hampstead
Hammersmith | Highgate | Hyde Park | Kensington | Kew | Knightsbridge | Nine Elms
Surrey Quays | Shoreditch | Wembley | Wapping | White City | Woolwich

International | China | Hong Kong | India | Israel | Malaysia | Middle East | Pakistan
Singapore | South Africa | Turkey

