



Beaufort Square, Beaufort Park, Colindale, NW9

Price Reduced to: £570,000

 Benham
& Reeves

Beaufort Square, Beaufort Park, Colindale, NW9

 2 Bedroom (s)  2 Bathroom (s)  Leasehold

Ref# BEA220736

Spanning across 773 square feet (approx.) of luxurious living space is this two bedroom, two bathroom apartment set on the fifth floor of Fairbank House. The property boasts a custom deigned kitchen with integrated appliances, a well-lit reception room with direct access to a large private terrace perfect for those summer evenings! Both double bedrooms are carpeted with bedroom one having the added benefit of fitted wardrobes and a slick ensuite shower room. Further advantages include a three piece family bathroom, utility room with storage and no onward selling chain.

North West London's most exciting new destination, created by St George. Set amongst beautifully landscaped gardens and courtyards, the residences at Beaufort Park offer a new kind of London living. As part of this established community, residents benefit from exclusive use of a range of facilities including a stylish gym, swimming pool and spa, a variety of shops, leisure and, restaurants. A true new destination for North West London, with the added benefit of being within walking distance to Colindale Underground Station (Northern Line), which offers direct services to the West End and the City in less than 30 minutes and offers night tube.

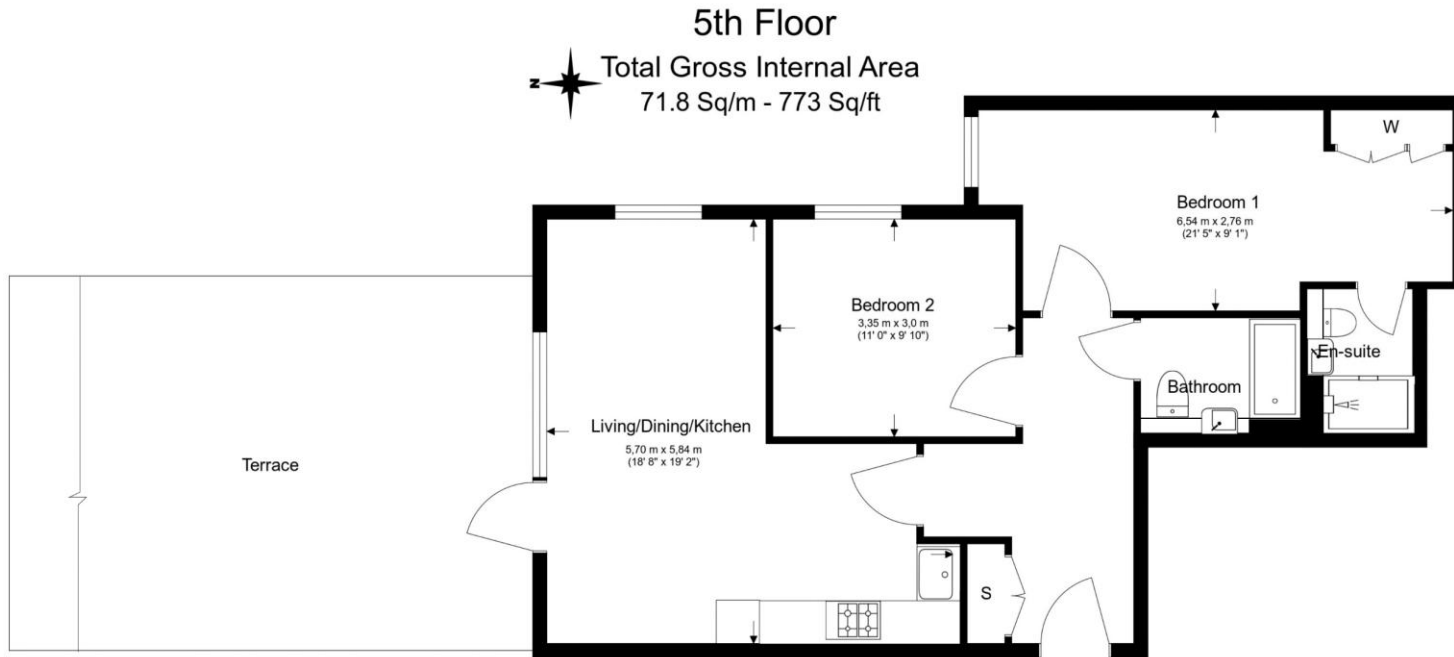


Beaufort Square, Beaufort Park, Colindale, NW9



Property Features:

- Stylishly Two Bedroom Apartment
- Two Bathrooms
- Fifth Floor
- 773 Square Feet (Approx)
- Large Private Terrace
- North & Eastern Aspect
- Residents Only Gym, Swimming Pool & Spa
- Colindale Tube Station (Northern Line)



Energy Efficiency Rating		
	Current	Potential
Very energy efficient - lower running costs		
(92+) A		
(81-91) B		
(69-80) C	77	77
(55-68) D		
(39-54) E		
(21-38) F		
(1-20) G		
Not energy efficient - higher running costs		
England, Scotland & Wales	EU Directive 2002/91/EC	

Floor Plan measurements are approximate and are for illustrative purposes only. While we do not doubt the floor plans accuracy, we make no guarantee, warranty or representation as to the accuracy and completeness of the floor plan.

Beaufort Square, Beaufort Park, Colindale, NW9

Terms & Conditions:

These particulars are for guidance purposes only and do not form part of an offer or contract.

Price Reduced £570,000

to:

Tenure: Leasehold
Expires 24/12/3004
Approximately 979 Years Remaining

Ground Rent: £375.00 (per annum)
For the year of 2025
Next Review: 2041
Next Increase: By RPI for the relevant year

Service Charge: £3,030.82 approx. (per annum)
For the year of 2025

Anticipated Rent: £2,200.00 pcm
Approx. 4.6% Yield

Disclaimer: These particulars are for guidance purposes only and do not form part of an offer or contract. Whilst care has been taken in their preparation, Benham and Reeves or the vendor shall not be held responsible for any inaccuracies. You should not rely on statements by Benham and Reeves Ltd in the particulars or by word of mouth or in writing as being factually accurate about the property, its condition or its value. Any areas, measurements or distances are approximate. The text, photographs and plans are for guidance only. The photographs appearing in these particulars show only certain parts of the property at the time when the photographs were taken. It should not be assumed that the property has all or any of the necessary planning permission, building regulation consent approval or other required consents for its previous, present or future intended usage. Any intending purchasers must satisfy themselves by inspection or by taking appropriate professional advice. Benham and Reeves Ltd has not rested any of the equipment, fittings or facilities.

Viewings:

All viewings are by appointment only through our Beaufort Park Office.

Our reference: BEA220736

T: 020 8732 7980

E: beaufortpark.sales@benhams.com

W: www.benhams.com

London | Canary Wharf | City | Colindale | Dartmouth Park | Ealing | Fulham | Hampstead
Hammersmith | Highgate | Hyde Park | Kensington | Kew | Knightsbridge | Nine Elms
Surrey Quays | Shoreditch | Wembley | Wapping | White City | Woolwich

International | China | Hong Kong | India | Israel | Malaysia | Middle East | Pakistan
Singapore | South Africa | Turkey

