



Cornell Square, Battersea, SW8

Asking Price: £650,000

 Benham
& Reeves

Cornell Square, Battersea, SW8

 2 Bedroom (s)  2 Bathroom (s)  Leasehold

Situated on the seventh floor of a contemporary gated development, this exceptional two bedroom apartment boasts stunning views and a thoughtfully designed layout. The property features a spacious entrance hall with ample storage, a stylish family bathroom and two generous double bedrooms. The principal bedroom benefits from built-in storage and a modern, well-sized en-suite. The open-plan kitchen and living area provide a sleek and functional space, complete with high-end appliances and access to a private balcony showcasing breathtaking city views.

This popular development is situated on Wandsworth Road which is in close proximity to the brilliant neighbourhoods and local amenities of Vauxhall, Clapham, Stockwell and Battersea. The development is a short walk away from a large Sainsbury's supermarket but also benefits from a smaller Tesco which is located on-site in addition to an on-site gym and concierge.

The development has superb transport links, located by several major underground and overground stations: Stockwell, Vauxhall, Wandsworth Road and Nine Elms station offering excellent transportation across Central London and beyond.





Property Features:

- Two Bedrooms
- Two Bathrooms
- Seventh Floor
- 722 Square Feet (Approx.)
- South-East facing balcony with city views
- Concierge
- Gym
- Nine Elms Station - 0.4 Miles (Northern)
- Wandsworth Road Rail Station - 0.4 Miles (Windrush)

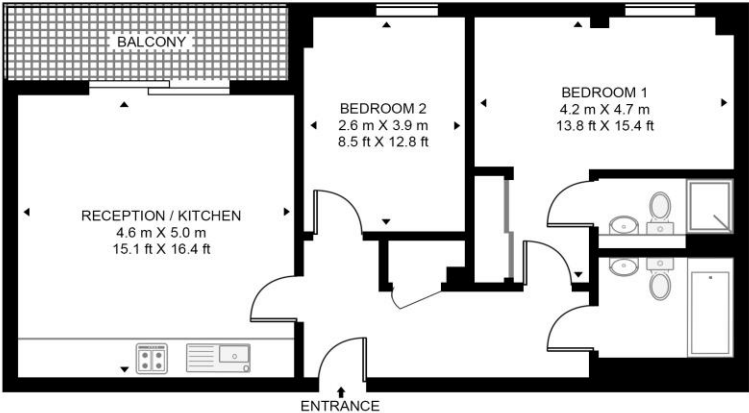


Cornell Square, Battersea, SW8



CORNELL SQUARE

APPROXIMATE GROSS INTERNAL FLOOR AREA 722 SQ.FT (67.1 SQ.M)



SEVENTH FLOOR

Energy Efficiency Rating		
	Current	Potential
<i>Very energy efficient - lower running costs</i>		
(92+) A		
(81-91) B		
(69-80) C	73	75
(55-68) D		
(39-54) E		
(21-38) F		
(1-20) G		
<i>Not energy efficient - higher running costs</i>		
England, Scotland & Wales	EU Directive 2002/91/EC	

This floor plan has been defined by the RICS Code of Measurement. This floor plan and all others are for approximate representative purposes only and upon usage is agreed to as such by the client.
 WWW: hdvirtualart.com | TEL: 0203.974.1567 | EMAIL: info@hdvirtualart.com

Terms & Conditions:

These particulars are for guidance purposes only and do not form part of an offer or contract.

Asking Price:	£650,000
Tenure:	Leasehold Expires 31/12/2133 Approximately 108 Years Remaining
Ground Rent:	£400.00 (per annum) For the year 2025
Service Charge:	£3,980.00 (per annum) For the year 2025
Anticipated Rent:	£2,500.00 pcm Approx. 4.6 % Yield

Viewings:

All viewings are by appointment only through our Nine Elms Office.

Our reference: NIN240224

T: 020 3282 3700

E: nineelms.sales@benhams.com

W: www.benhams.com

Disclaimer: These particulars are for guidance purposes only and do not form part of an offer or contract. Whilst care has been taken in their preparation, Benham and Reeves or the vendor shall not be held responsible for any inaccuracies. You should not rely on statements by Benham and Reeves Ltd in the particulars or by word of mouth or in writing as being factually accurate about the property, its condition or its value. Any areas, measurements or distances are approximate. The text, photographs and plans are for guidance only. The photographs appearing in these particulars show only certain parts of the property at the time when the photographs were taken. It should not be assumed that the property has all or any of the necessary planning permission, building regulation consent approval or other required consents for it previous, present or future intended usage. Any intending purchasers must satisfy themselves by inspection or by taking appropriate professional advice. Benham and Reeves Ltd has not rested any of the equipment, fittings or facilities.

London | Canary Wharf | City | Colindale | Dartmouth Park | Ealing | Fulham | Hampstead
Hammersmith | Highgate | Hyde Park | Kensington | Kew | Knightsbridge | Nine Elms
Surrey Quays | Shoreditch | Wembley | Wapping | White City | Woolwich

International | China | Hong Kong | India | Israel | Malaysia | Middle East | Pakistan
Singapore | South Africa | Turkey

