



Westmont, Wood Lane, White City, W12

Asking Price: £765,000



Westmont, Wood Lane, White City, W12

 1 Bedroom (s)  1 Bathroom (s)  Leasehold

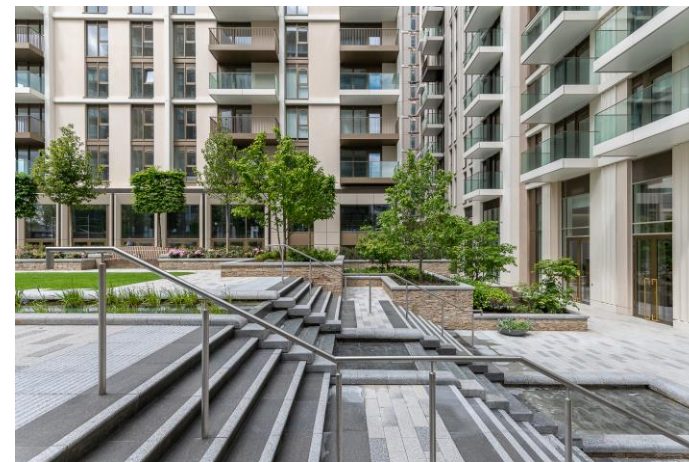
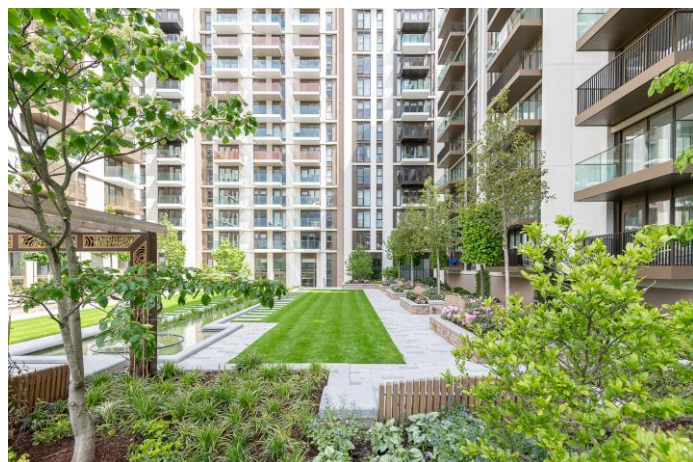
A remarkable opportunity to acquire an off-plan one bedroom apartment in a prime location. This exquisite property currently in the assignment stage, promises a luxurious and contemporary living experience. Boasting a well-designed layout, the apartment offers spacious open-plan living and dining areas, perfect for entertaining guests or relaxing after a long day. The modern kitchen is equipped with high-quality appliances and ample storage space. The generously proportioned bedroom provides a tranquil retreat, with built-in wardrobes for added convenience. Additional features include an elegant bathroom, tasteful finishes throughout, and large windows that flood the space with natural light.

Residents will have access to a range of exceptional facilities, including a private gym, communal gardens, and secure underground parking. Conveniently located close to amenities, transport links, and renowned schools, this apartment is ideal for professionals & couples looking for a sophisticated urban lifestyle.

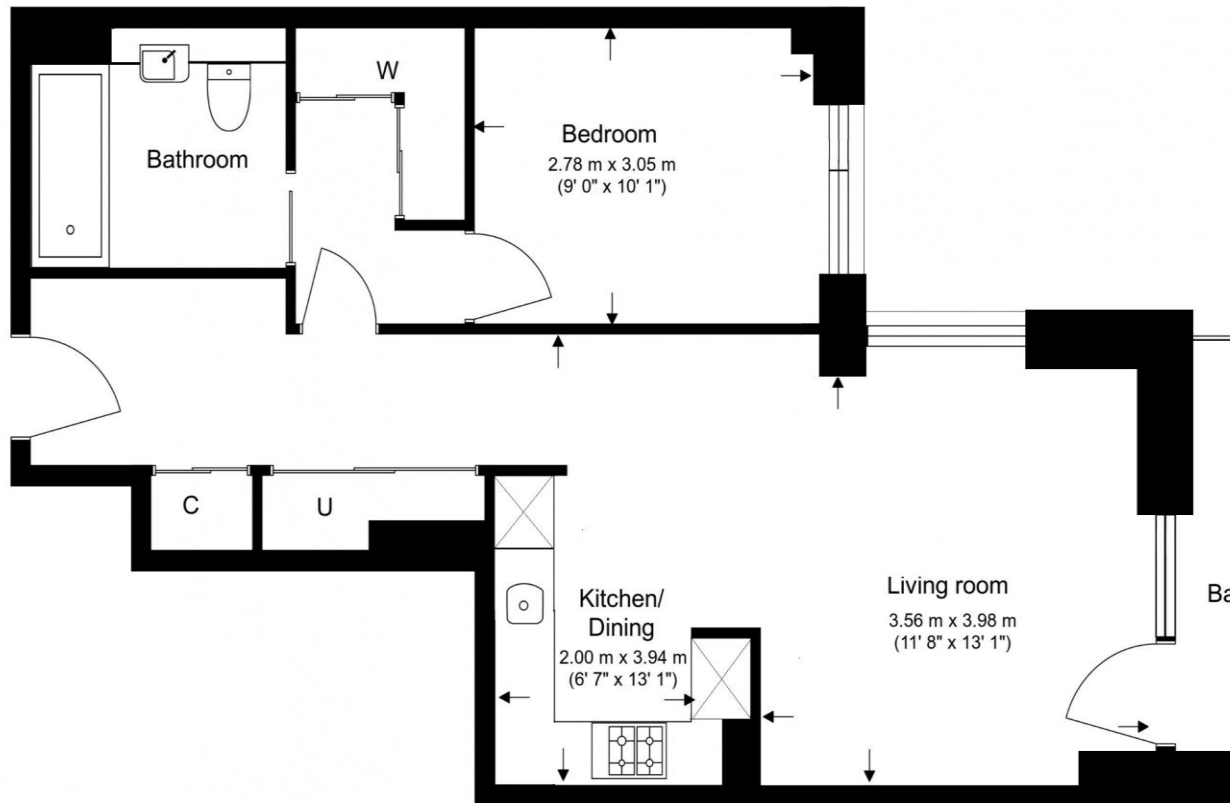
Luxury amenities, including a private Mediterranean inspired rooftop Beach Club exclusively for residents.

Property Features:

- Off Plan Opportunity, Contract Reassignment Completing Q1-2 2025
- One Bedroom
- One Bathroom
- 625 Square Feet (Approx.)
- Fourth Floor
- 24-Hour Concierge
- Swimming Pool with Sun Terrace & Therapeutic Hydro-Pool
- Residents' Club Lounge, Dining Room and Private Kitchen
- Fully Equipped Gym & Treatment and Massage Rooms
- Two 12-Seat Private Cinemas
- White City and Wood Lane Underground Stations (Zone 2)



Total Gross Internal Area
58.1 Sq/m - 625 Sq/ft



Floor Plan measurements are approximate and are for illustrative purposes only. While we do not doubt the floor plans accuracy, we make no guarantee, warranty or representation as to the accuracy and completeness of the floor plan.

Terms & Conditions:

These particulars are for guidance purposes only and do not form part of an offer or contract.

Asking Price: £765,000

Tenure: Leasehold
Expires 31/12/3017
Approximately 993 Years Remaining

Ground Rent: £500.00 (per annum)
to completion

Service Charge: £4,062.50 (per annum)
Approximately £6.50 per square foot to completion

Anticipated Rent: £3,500.00 pcm
Approx. 5.5 % Yield

Viewings:

All viewings are by appointment only through our White City Office.

Our reference: KEN240183

T: 020 7402 9866

E: whitecity.sales@benhams.com

W: www.benhams.com

Disclaimer: These particulars are for guidance purposes only and do not form part of an offer or contract. Whilst care has been taken in their preparation, Benham and Reeves or the vendor shall not be held responsible for any inaccuracies. You should not rely on statements by Benham and Reeves Ltd in the particulars or by word of mouth or in writing as being factually accurate about the property, its condition or its value. Any areas, measurements or distances are approximate. The text, photographs and plans are for guidance only. The photographs appearing in these particulars show only certain parts of the property at the time when the photographs were taken. It should not be assumed that the property has all or any of the necessary planning permission, building regulation consent approval or other required consents for its previous, present or future intended usage. Any intending purchasers must satisfy themselves by inspection or by taking appropriate professional advice. Benham and Reeves Ltd has not rested any of the equipment, fittings or facilities.

London | Canary Wharf | City | Colindale | Dartmouth Park | Ealing | Fulham | Hampstead
Hammersmith | Highgate | Hyde Park | Kensington | Kew | Knightsbridge | Nine Elms
Surrey Quays | Shoreditch | Wembley | Wapping | White City | Woolwich

International | China | Hong Kong | India | Israel | Malaysia | Middle East | Pakistan
Singapore | South Africa | Turkey

