



Middle Road, London, W7

Price Reduced to: £400,000

 Benham
& Reeves

Middle Road, London, W7

 1 Bedroom (s)  1 Bathroom (s)  Leasehold

Ref#: BEA240193

A stunning one bedroom apartment spanning a generous circa. 560 square feet of internal living space. This ground floor apartment is built up of a custom designed kitchen with Silestone worktops, black handleless units including wall and base units with built-in Bosch appliances, and under-cabinet LED lighting. The bright and airy living area offers direct access to the private south west terrace which is conveniently sized at 134 square feet. The carpeted bedroom offers ample room and has the added luxury of two built in wardrobes. The stylish bathroom suite consists of semi-recessed basin set on vanity top with brushed stainless steel mixer tap, bespoke wall-mounted vanity storage cupboard with frameless mirror located above WC and basin, with integrated shaver socket and lighting, built-in single ended bath with handheld shower and wall-mounted overhead shower. Further benefits of this home include wide plank engineered wood flooring to hallway, lounge, and kitchen diner, MVHR system, in-date warranty cover under LABC Scheme, and no onward selling chain.

Set in a leafy west London neighbourhood, Hanwell Square is a thoughtfully designed development wrapped around an inviting village square with beautifully landscaped courtyards and instinctive pitched roofs. It's home to a fledgling but already vibrant community of apartments, shops and businesses. What's more, it's just 18 short minutes away from London's West End on the speedy new Elizabeth line. Hanwell itself is one of west London's best-kept secrets. Warm and welcoming, with a strong sense of place and community, it's a wonderful neighbourhood to put down roots. Nestled in Ealing, the capital's greenest borough with 3,300 acres of green space, Hanwell is super handy for White City, Chiswick, Richmond and Kew Gardens. Blessed with all the charm and character of its west London neighbours, it comes without the hefty price tag.

As a resident you'll receive full membership of The Boston Club, giving you a host of benefits that include a helpful concierge service, state-of-the-art gym, beautifully landscaped gardens, and roof terraces where you can relax and enjoy the far-reaching views.



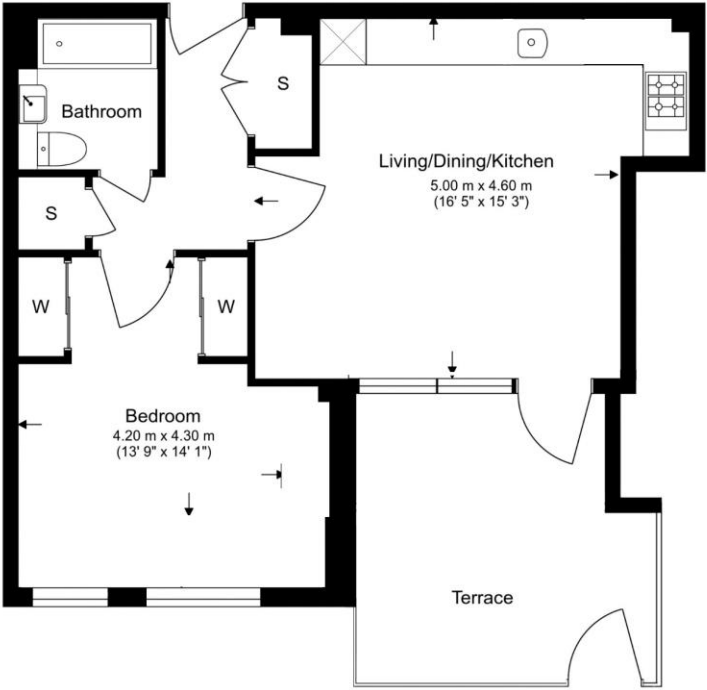


Property Features:

- Modern One Bedroom Apartment
- 560 Square Feet (Approx.)
- Ground Floor
- 134 Square Foot South West Terrace
- Concierge Service & State Of The Art Gym
- Roof Terraces & Communal Gardens
- Hanwell Station (Elizabeth Line)
- Chain Free

Total Gross Internal Area

52.0 Sq/m - 560 Sq/ft



Energy Efficiency Rating		
	Current	Potential
<i>Very energy efficient - lower running costs</i>		
(92+) A		
(81-91) B	84	84
(69-80) C		
(55-68) D		
(39-54) E		
(21-38) F		
(1-20) G		
<i>Not energy efficient - higher running costs</i>		
England, Scotland & Wales	EU Directive 2002/91/EC	

Floor Plan measurements are approximate and are for illustrative purposes only. While we do not doubt the floor plans accuracy, we make no guarantee, warranty or representation as to the accuracy and completeness of the floor plan.

Terms & Conditions:

These particulars are for guidance purposes only and do not form part of an offer or contract.

Price Reduced £400,000
to:

Tenure: Leasehold
Expires 24/12/3021
Approximately 997 Years Remaining

Ground Rent: £200.00 (per annum)
For the year of 2024

Service Charge: £1,800.00 approx. (per annum)
For the year of 2024

Anticipated Rent: £1,750.00 pcm
Approx. 5.2% Yield

Viewings:

All viewings are by appointment only through our Ealing Office.

Our reference: BEA240193

T: 020 8280 0140

E: ealing.sales@benhams.com

W: www.benhams.com

Disclaimer: These particulars are for guidance purposes only and do not form part of an offer or contract. Whilst care has been taken in their preparation, Benham and Reeves or the vendor shall not be held responsible for any inaccuracies. You should not rely on statements by Benham and Reeves Ltd in the particulars or by word of mouth or in writing as being factually accurate about the property, its condition or its value. Any areas, measurements or distances are approximate. The text, photographs and plans are for guidance only. The photographs appearing in these particulars show only certain parts of the property at the time when the photographs were taken. It should not be assumed that the property has all or any of the necessary planning permission, building regulation consent approval or other required consents for its previous, present or future intended usage. Any intending purchasers must satisfy themselves by inspection or by taking appropriate professional advice. Benham and Reeves Ltd has not rested any of the equipment, fittings or facilities.

London | Canary Wharf | City | Colindale | Dartmouth Park | Ealing | Fulham | Hampstead
Hammersmith | Highgate | Hyde Park | Kensington | Kew | Knightsbridge | Nine Elms
Surrey Quays | Shoreditch | Wembley | Wapping | White City | Woolwich

International | China | Hong Kong | India | Israel | Malaysia | Middle East | Pakistan
Singapore | South Africa | Turkey

