



Waterlow Road, Archway, N19

Asking Price: £525,000

 Benham
& Reeves

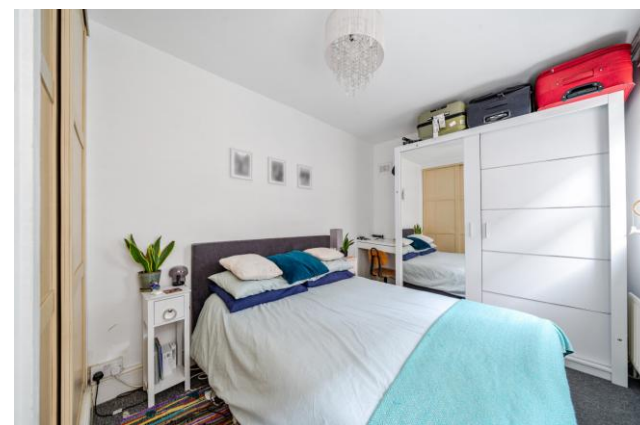
Waterlow Road, Archway, N19

🏠 1 Bedroom (s) 🚿 1 Bathroom (s) 🔑 Leasehold

This outstanding level ground floor 1 bedroom apartment has direct access to its own private patio garden.

This stunning home is neutrally decorated and is generously proportioned, the property features a bright reception room, and double bedroom overlooking its own private patio garden and the 11' kitchen is fully fitted

Waterlow Road is a highly sought-after residential road conveniently situated between Highgate and Archway, so is superbly located for the multiple shopping and restaurant facilities of the area. Archway tube station (Northern line Zone 2) station is within easy walking distance.





Property Features:

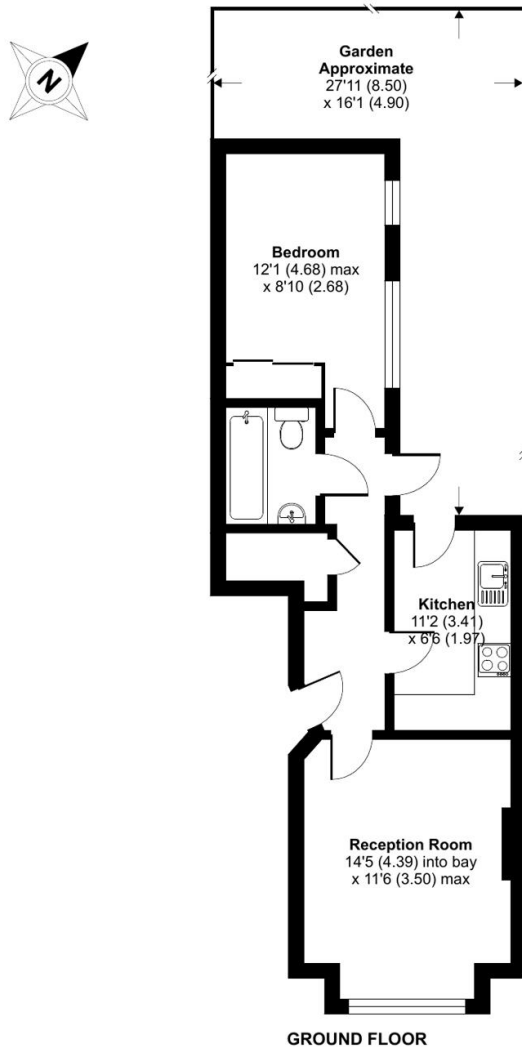
- Entrance Hall
- Reception Room
- Separate Kitchen
- Double Bedroom
- Bathroom
- Private Patio Garden
- Chain Free



Waterlow Road, London, N1

Approximate Area = 488 sq ft / 45.3 sq m

For identification only - Not to scale



Energy Efficiency Rating		
	Current	Potential
Very energy efficient - lower running costs		
(92+) A		
(81-91) B		
(69-80) C		77
(55-68) D	65	
(39-54) E		
(21-38) F		
(1-20) G		
Not energy efficient - higher running costs		
England, Scotland & Wales	EU Directive 2002/91/EC	

Terms & Conditions:

These particulars are for guidance purposes only and do not form part of an offer or contract.

Asking Price: £525,000

Tenure: Leasehold
Expires 03/12/2125
Approximately 100 Years Remaining

Viewings:

All viewings are by appointment only through our Highgate Office.

Our reference: HIG250014

T: 020 8341 2335

E: highgate.sales@benhams.com

W: www.benhams.com

Disclaimer: These particulars are for guidance purposes only and do not form part of an offer or contract. Whilst care has been taken in their preparation, Benham and Reeves or the vendor shall not be held responsible for any inaccuracies. You should not rely on statements by Benham and Reeves Ltd in the particulars or by word of mouth or in writing as being factually accurate about the property, its condition or its value. Any areas, measurements or distances are approximate. The text, photographs and plans are for guidance only. The photographs appearing in these particulars show only certain parts of the property at the time when the photographs were taken. It should not be assumed that the property has all or any of the necessary planning permission, building regulation consent approval or other required consents for its previous, present or future intended usage. Any intending purchasers must satisfy themselves by inspection or by taking appropriate professional advice. Benham and Reeves Ltd has not rested any of the equipment, fittings or facilities.

London | Canary Wharf | City | Colindale | Dartmouth Park | Ealing | Fulham | Hampstead
Hammersmith | Highgate | Hyde Park | Kensington | Kew | Knightsbridge | Nine Elms
Surrey Quays | Shoreditch | Wembley | Wapping | White City | Woolwich

International | China | Hong Kong | India | Israel | Malaysia | Middle East | Pakistan
Singapore | South Africa | Turkey

