



# Batchford House, Moorhead Way, Kidbrooke, SE3

Asking Price: £415,000

Benham  
& Reeves

# Batchford House, Moorhead Way, Kidbrooke, SE3

 1 Bedroom (s)  1 Bathroom (s)  Leasehold

A brand new one bedroom apartment located in Batchford House, Kidbrooke Village. Situated on 1st floor and spanning an approximate 538 square feet, this fabulous apartment comprises an open plan living room with a fitted kitchen area, with integrated appliances. There is a double bedroom with fitted wardrobes, a modern three-piece bathroom suite and utility room. Additional benefits include wooden flooring to the living areas, carpet to the bedroom, a balcony and secure bike storage.

Kidbrooke Village has an array of amenities including a concierge service, resident's gymnasium, restaurants, schools and supermarkets. The presence of green spaces and the nearby award-winning Green Park add to the welcoming atmosphere of this location.

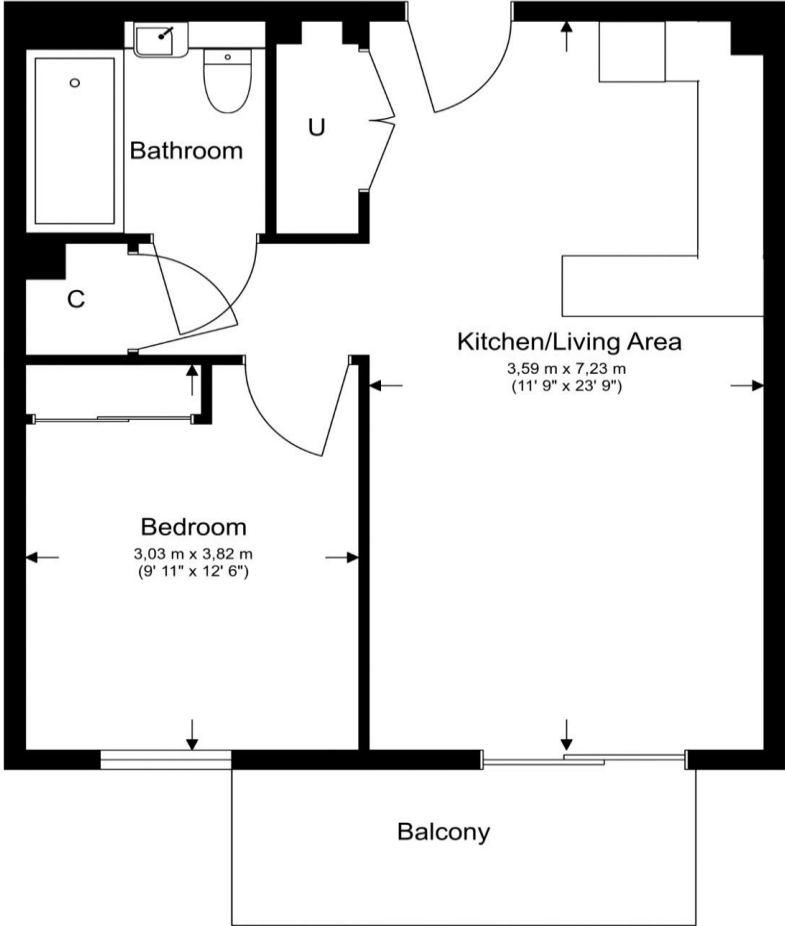
Kidbrooke village also benefits from having its own onsite, Zone 3 station offering excellent links to Canary Wharf, London Bridge and Victoria.

## Property Features:

- Completing Q3 2025
- One Bedroom
- 538 Square Feet (Approx.)
- Open Plan Living Area
- Balcony
- Concierge
- Residents' Communal Garden
- Residents' Gym
- Kidbrooke Station (Zone 3)



Total Gross Internal Area  
50.0 Sq/m - 538 Sq/ft



Floor Plan measurements are approximate and are for illustrative purposes only. While we do not doubt the floor plans accuracy, we make no guarantee, warranty or representation as to the accuracy and completeness of the floor plan.

## Terms & Conditions:

These particulars are for guidance purposes only and do not form part of an offer or contract.

Asking Price:	£415,000
Tenure:	Leasehold Expires 22/01/3021 Approximately 995 Years Remaining
Ground Rent:	Nil
Service Charge:	£2,729.00 (per annum) to completion
Anticipated Rent:	£1,800.00 pcm Approx. 5.2 % Yield

## Viewings:

All viewings are by appointment only through our China Office.

Our reference: CHN250006

T: +86 21 6039 8515

E: [china@benhams.cn](mailto:china@benhams.cn)

W: [www.benhams.com](http://www.benhams.com)

Disclaimer: These particulars are for guidance purposes only and do not form part of an offer or contract. Whilst care has been taken in their preparation, Benham and Reeves or the vendor shall not be held responsible for any inaccuracies. You should not rely on statements by Benham and Reeves Ltd in the particulars or by word of mouth or in writing as being factually accurate about the property, its condition or its value. Any areas, measurements or distances are approximate. The text, photographs and plans are for guidance only. The photographs appearing in these particulars show only certain parts of the property at the time when the photographs were taken. It should not be assumed that the property has all or any of the necessary planning permission, building regulation consent approval or other required consents for its previous, present or future intended usage. Any intending purchasers must satisfy themselves by inspection or by taking appropriate professional advice. Benham and Reeves Ltd has not rested any of the equipment, fittings or facilities.

London | Canary Wharf | City | Colindale | Dartmouth Park | Ealing | Fulham | Hampstead  
Hammersmith | Highgate | Hyde Park | Kensington | Kew | Knightsbridge | Nine Elms  
Surrey Quays | Shoreditch | Wembley | Wapping | White City | Woolwich

International | China | Hong Kong | India | Israel | Malaysia | Middle East | Pakistan  
Singapore | South Africa | Turkey

