



Block E Phase V, Kidbrook Village, SE3

Asking Price: £430,000

Benham
& Reeves

Block E Phase V, Kidbrook Village, SE3

 1 Bedroom (s)  1 Bathroom (s)  Leasehold

Completing Q4 2024

Internal photos are Show Home for marketing reference only

This exceptional 1 bedroom flat is situated within a new apartment building in a new development by Berkeley Homes. Located on the 1st floor, this spacious flat is in impeccable decorative condition, offering open-plan living and breathtaking views. The apartment features an open-plan reception room with access to a generously sized patio, complete with wooden floors and a modern, beautifully fitted kitchen. The patio provides ample space for your private outdoor enjoyment.

The well-proportioned double bedroom includes built-in storage, creating a cozy ambiance with additional storage options.

Waterlily Court, adjacent to Kidbrook station, is strategically positioned for easy travel to London Bridge, Waterloo, and Charing Cross.



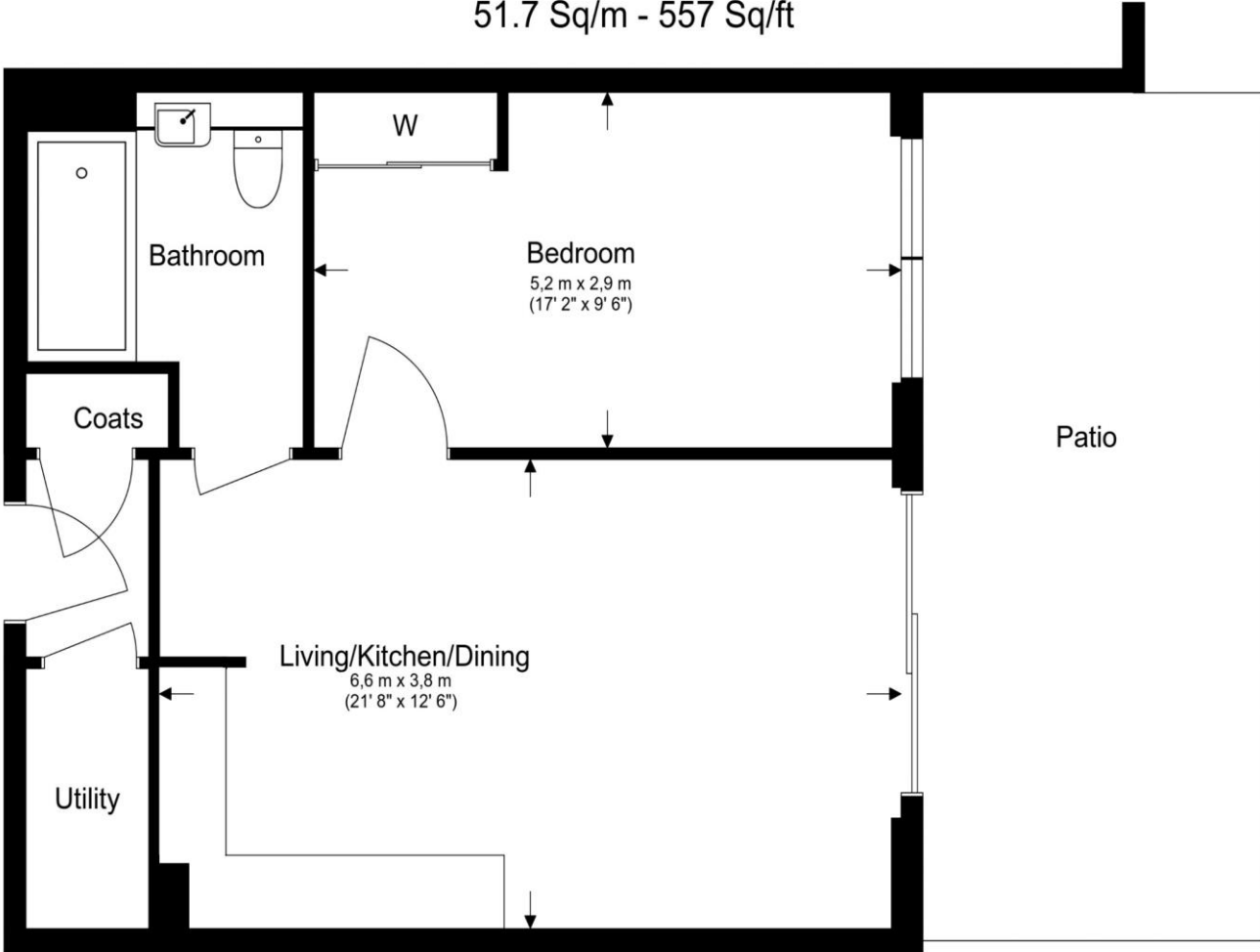


Property Features:

- Completing Q4 2024
- One Bedroom
- 557 Square Feet
- 1st floor
- Open Plan Living Area
- Patio
- Concierge
- Residents' Communal Garden
- Residents' Gym
- Kidbrook Station (Zone 3)



Total Gross Internal Area
51.7 Sq/m - 557 Sq/ft



Floor Plan measurements are approximate and are for illustrative purposes only. While we do not doubt the floor plans accuracy, we make no guarantee, warranty or representation as to the accuracy and completeness of the floor plan.

Terms & Conditions:

These particulars are for guidance purposes only and do not form part of an offer or contract.

Asking Price:	£430,000
Tenure:	Leasehold Expires 01/01/3023 Approximately 999 Years Remaining
Ground Rent:	Peppercorn
Service Charge:	£2484.22 (per annum) to completion (Est. £4.46 per square foot)

Viewings:

All viewings are by appointment only through our Woolwich Office.

Our reference: CWH230334

T: 020 7740 3050

E: woolwich.sales@benhams.com

W: www.benhams.com

Disclaimer: These particulars are for guidance purposes only and do not form part of an offer or contract. Whilst care has been taken in their preparation, Benham and Reeves or the vendor shall not be held responsible for any inaccuracies. You should not rely on statements by Benham and Reeves Ltd in the particulars or by word of mouth or in writing as being factually accurate about the property, its condition or its value. Any areas, measurements or distances are approximate. The text, photographs and plans are for guidance only. The photographs appearing in these particulars show only certain parts of the property at the time when the photographs were taken. It should not be assumed that the property has all or any of the necessary planning permission, building regulation consent approval or other required consents for its previous, present or future intended usage. Any intending purchasers must satisfy themselves by inspection or by taking appropriate professional advice. Benham and Reeves Ltd has not rested any of the equipment, fittings or facilities.

London | Canary Wharf | City | Colindale | Dartmouth Park | Ealing | Fulham | Hampstead
Hammersmith | Highgate | Hyde Park | Kensington | Kew | Knightsbridge | Nine Elms
Surrey Quays | Shoreditch | Wembley | Wapping | White City | Woolwich

International | China | Hong Kong | India | Israel | Malaysia | Middle East | Pakistan
Singapore | South Africa | Turkey

