



Octavia House, Townmead Road, Fulham, SW6

Asking Price: £440,000

 Benham
& Reeves

Octavia House, Townmead Road, Fulham, SW6

 1 Bedroom (s)  1 Bathroom (s)  Leasehold

Beautifully presented throughout, is this stunning Manhattan studio apartment. Situated on the 4th floor and spanning an approximate 435 square feet, this property comprises a stylish open-plan kitchen/reception room with fully integrated appliances, a double bedroom and a three piece bathroom suite. The property also benefits from wooden flooring, ample storage and a video entry phone system.

The Imperial Wharf development has a 24-hour concierge, communal gardens and green spaces throughout, a residents' gymnasium and has a selection of local amenities including local supermarket, restaurant, coffee shop and a riverside pub.

Imperial Wharf overground station is in close proximity (0.1 mile) and offers a quick connection to either West Brompton (District line) or Clapham Junction Overground station.



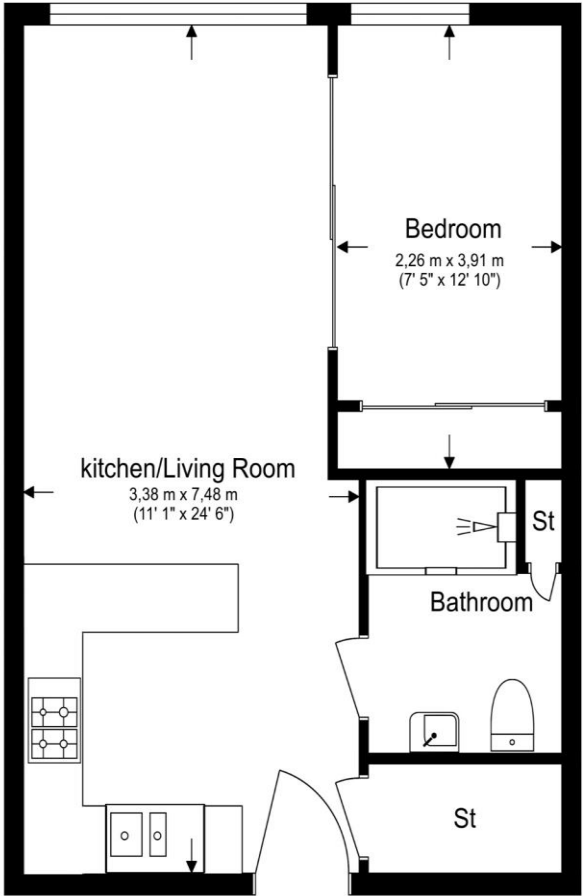


Property Features:

- Manhattan Studio Apartment
- Fourth Floor
- 435 Square Feet (Approx.)
- Fully Fitted Kitchen
- Modern and Spacious
- 24-Hour Concierge, Lift Access, Residents' Gym
- Imperial Wharf and Fulham Broadway Stations (Zone 2)



Total Gross Internal Area
40 Sq/m - 435 Sq/ft



Energy Efficiency Rating		
	Current	Potential
<i>Very energy efficient - lower running costs</i>		
(92+) A		
(81-91) B	83	87
(69-80) C		
(55-68) D		
(39-54) E		
(21-38) F		
(1-20) G		
<i>Not energy efficient - higher running costs</i>		
England, Scotland & Wales	EU Directive 2002/91/EC	



Floor Plan measurements are approximate and are for illustrative purposes only. While we do not doubt the floor plans accuracy, we make no guarantee, warranty or representation as to the accuracy and completeness of the floor plan.

Terms & Conditions:

These particulars are for guidance purposes only and do not form part of an offer or contract.

Asking Price:	£440,000
Tenure:	Leasehold Expires 24/12/2998 Approximately 973 Years Remaining
Ground Rent:	£450.00 (per annum) to June 2025
Service Charge:	£2,500.00 (per annum) to June 2025
Anticipated Rent:	£2,100.00 pcm Approx. 5.7 % Yield

Viewings:

All viewings are by appointment only through our Imperial Wharf Office.

Our reference: NIN240167

T: 020 3282 3700

E: imperialwharf.sales@benhams.com

W: www.benhams.com

Disclaimer: These particulars are for guidance purposes only and do not form part of an offer or contract. Whilst care has been taken in their preparation, Benham and Reeves or the vendor shall not be held responsible for any inaccuracies. You should not rely on statements by Benham and Reeves Ltd in the particulars or by word of mouth or in writing as being factually accurate about the property, its condition or its value. Any areas, measurements or distances are approximate. The text, photographs and plans are for guidance only. The photographs appearing in these particulars show only certain parts of the property at the time when the photographs were taken. It should not be assumed that the property has all or any of the necessary planning permission, building regulation consent approval or other required consents for it previous, present or future intended usage. Any intending purchasers must satisfy themselves by inspection or by taking appropriate professional advice. Benham and Reeves Ltd has not rested any of the equipment, fittings or facilities.

London | Canary Wharf | City | Colindale | Dartmouth Park | Ealing | Fulham | Hampstead
Hammersmith | Highgate | Hyde Park | Kensington | Kew | Knightsbridge | Nine Elms
Surrey Quays | Shoreditch | Wembley | Wapping | White City | Woolwich

International | China | Hong Kong | India | Israel | Malaysia | Middle East | Pakistan
Singapore | South Africa | Turkey

