



Pearson Square, Fitzrovia, W1T

Asking Price: £1,550,000

Benham
& Reeves

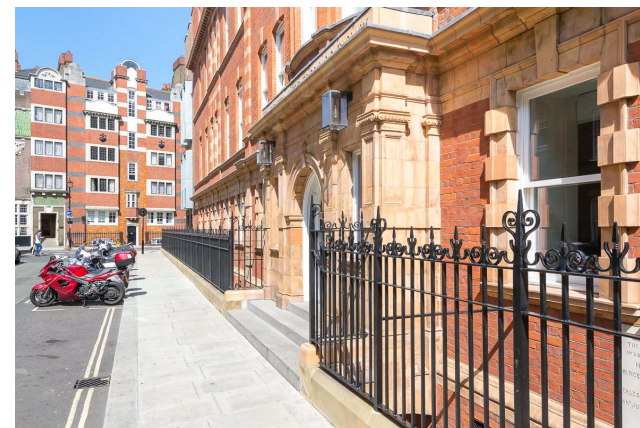
Pearson Square, Fitzrovia, W1T

 1 Bedroom (s)  1 Bathroom (s)  Leasehold

This exceptional and bright one bedroom apartment in Pearson Square covers 766 square feet (approx.) and comprises a large reception area with dining space, open-plan contemporary bespoke designed fitted kitchen. One generous bedroom with a dressing area, ensuite bathroom and an additional guest WC. This property is west facing with plenty of natural light. The apartment additionally offers a superb specification including comfort cooling and under floor heating.

This apartment benefits from residents' gym access, concierge, lounge & cinema screening room. Charlotte Street, with its eclectic range of popular restaurants, is nearby and the world-renowned shops on Oxford Street and Regent Street are within close proximity.

Transport links are excellent from nearby Oxford Circus, Tottenham Court Road and Goodge Street underground stations, Euston and Kings Cross St Pancras train stations and access to the West and Heathrow via the A40.





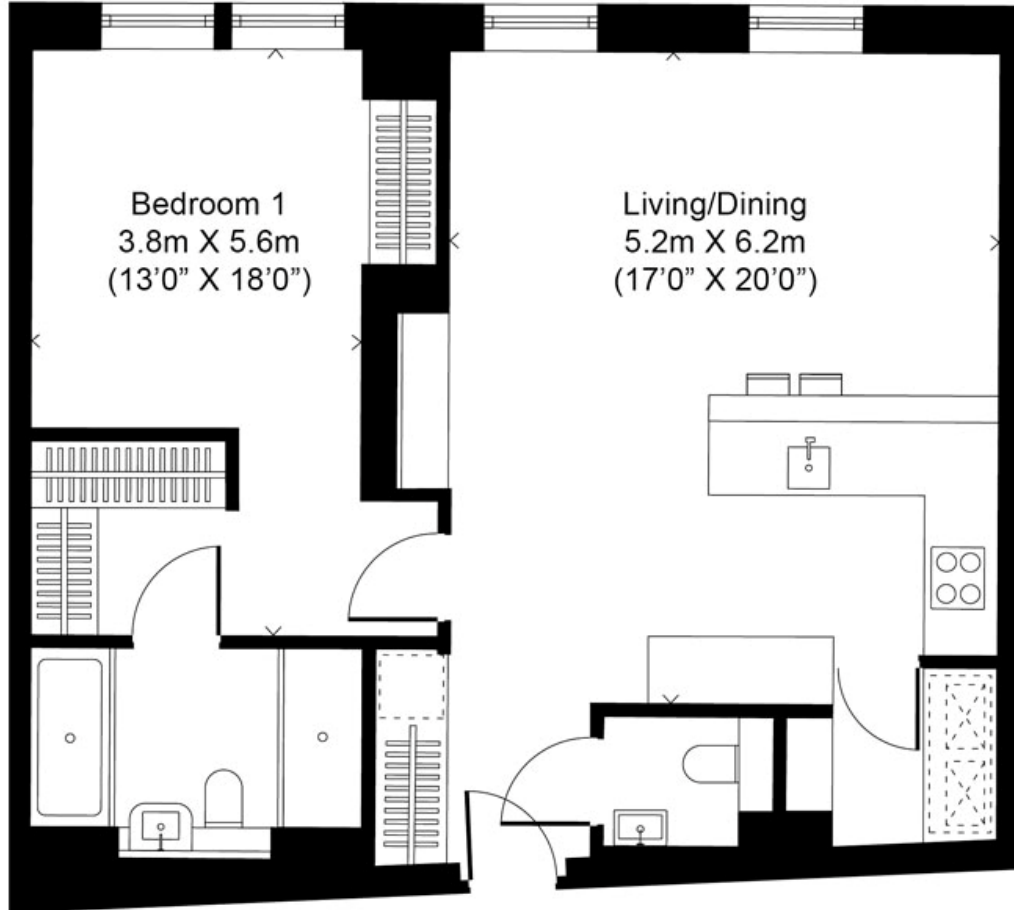
Property Features:

- One Bedroom
- One Bathroom
- Fourth floor
- 766 Square Feet (Approx.)
- 24 Hour Concierge
- Resident's Gym
- Lounge & Cinema Screening Room
- Oxford Circus, Tottenham Court Road and Goodge Street Stations (Zone 1)



Total Gross Internal Area

71.25 Sq/m - 766 Sq/ft



Floor Plan measurements are approximate and are for illustrative purposes only. While we do not doubt the floor plans accuracy, we make no guarantee, warranty or representation as to the accuracy and completeness of the floor plan.

Energy Efficiency Rating

	Current	Potential
<i>Very energy efficient - lower running costs</i>		
(92+) A		
(81-91) B	87	87
(69-80) C		
(55-68) D		
(39-54) E		
(21-38) F		
(1-20) G		
<i>Not energy efficient - higher running costs</i>		
England, Scotland & Wales	EU Directive 2002/91/EC	

Terms & Conditions:

These particulars are for guidance purposes only and do not form part of an offer or contract.

Asking Price: £1,550,000

Tenure: Leasehold
Expires 30/12/3004
Approximately 980 Years Remaining

Ground Rent: £600.00 (per annum)

Service Charge: £11,170.84 (per annum)
to Jne 2024

Anticipated Rent: £7,100.00 pcm
Approx. 5.5% Yield

Viewings:

All viewings are by appointment only through our Kensington Office.

Our reference: KEN220119

T: 020 7938 3522

E: kensington.sales@benhams.com

W: www.benhams.com

Disclaimer: These particulars are for guidance purposes only and do not form part of an offer or contract. Whilst care has been taken in their preparation, Benham and Reeves or the vendor shall not be held responsible for any inaccuracies. You should not rely on statements by Benham and Reeves Ltd in the particulars or by word of mouth or in writing as being factually accurate about the property, its condition or its value. Any areas, measurements or distances are approximate. The text, photographs and plans are for guidance only. The photographs appearing in these particulars show only certain parts of the property at the time when the photographs were taken. It should not be assumed that the property has all or any of the necessary planning permission, building regulation consent approval or other required consents for it previous, present or future intended usage. Any intending purchasers must satisfy themselves by inspection or by taking appropriate professional advice. Benham and Reeves Ltd has not rested any of the equipment, fittings or facilities.

London | Canary Wharf | City | Colindale | Dartmouth Park | Ealing | Fulham | Hampstead
Hammersmith | Highgate | Hyde Park | Kensington | Kew | Knightsbridge | Nine Elms
Surrey Quays | Shoreditch | Wembley | Wapping | White City | Woolwich

International | China | Hong Kong | India | Israel | Malaysia | Middle East | Pakistan
Singapore | South Africa | Turkey

