



# Salk Close, Colindale, NW9

Asking Price: £315,000

 Benham  
& Reeves

# Salk Close, Colindale, NW9

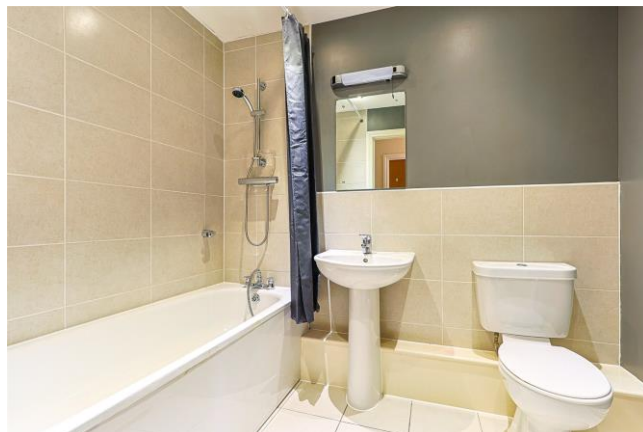
🏠 1 Bedroom (s)   🚿 1 Bathroom (s)   🔑 Leasehold

REF#: BEA250031

Set on the ground floor and spanning an impressive 599 square feet (approx.) is this modern one bedroom, one bathroom apartment. The property is in great decorative order throughout and boasts a modern kitchen and an airy living room. The bedroom is carpeted and is well sized for storage space. Further benefits include a modern three piece family bathroom, storage cupboard, allocated parking bay, private terrace with access into the apartment and no onward selling chain.

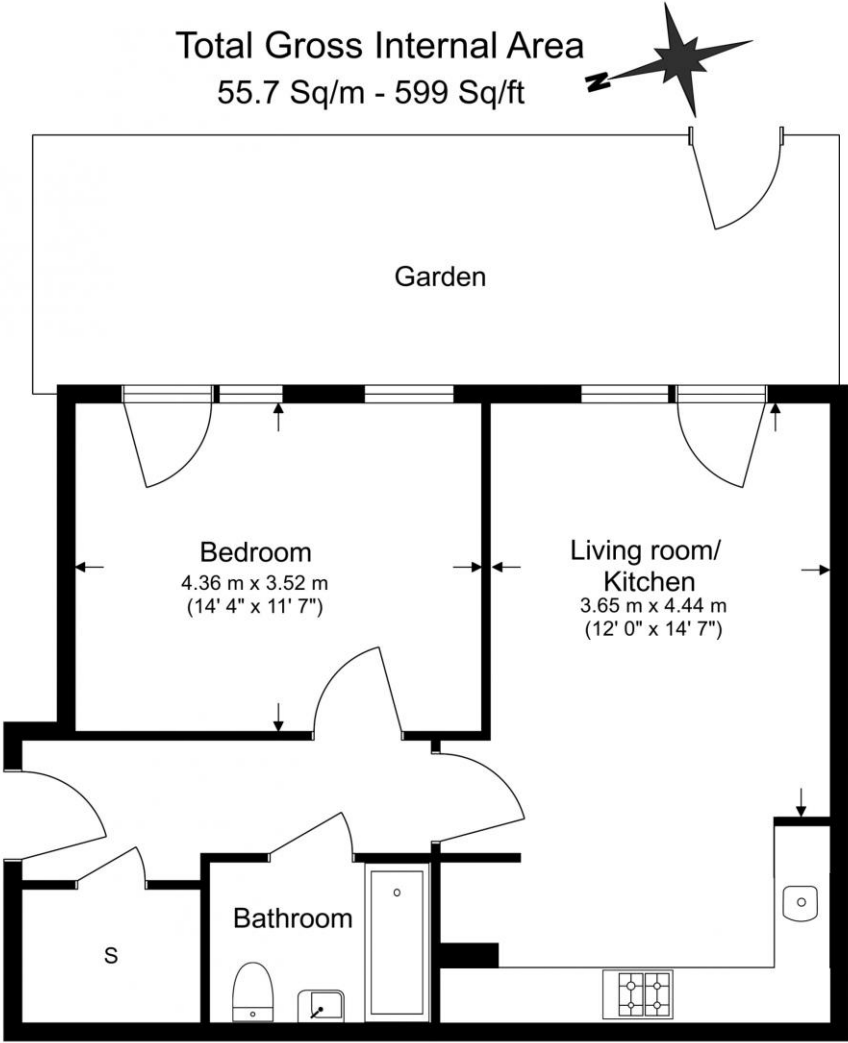
The Pulse is an outstanding development of apartments adjacent to Colindale Station, just 22 minutes from Central London and part of a multi-million-pound regeneration of Colindale. To the front of the development is Colindale Underground Station making Pulse only a few tube stops away from the city's most famous landmarks and shopping districts. Pulse has been thoughtfully planned to become a landmark development and desirable residential area. Set in almost 13 acres, featuring a central plaza, residents benefit from the atmosphere of city life but with open green spaces all around. The Pulse combines the best of capital living – the perfect blend of contemporary architecture with the stunning historical façade of the newly refurbished Victorian Colindale Hospital.





## Property Features:

- Chain Free
- One Bedroom Apartment
- Ground Floor
- 599 Square Feet (Approx.)
- Private East Facing Terrace
- Allocated Parking Bay
- Colindale Tube Station (Northern Line)
- Nearby Shopping & Leisure Facilities



Energy Efficiency Rating		
	Current	Potential
<i>Very energy efficient - lower running costs</i>		
(92+)		
A		
(81-91)		
B		
(69-80)	78	78
C		
(55-68)		
D		
(39-54)		
E		
(21-38)		
F		
(1-20)		
G		
<i>Not energy efficient - higher running costs</i>		
<b>England, Scotland &amp; Wales</b>	EU Directive 2002/91/EC	



Floor Plan measurements are approximate and are for illustrative purposes only. While we do not doubt the floor plans accuracy, we make no guarantee, warranty or representation as to the accuracy and completeness of the floor plan.

## Terms & Conditions:

These particulars are for guidance purposes only and do not form part of an offer or contract.

Asking Price: £315,000

Tenure: Leasehold  
Expires 13/06/2138  
Approximately 113 Years Remaining

Ground Rent: £225.00 (per annum)  
For the year of 2024

Service Charge: £2,260.00 approx. (per annum)  
For the year of 2024

Anticipated Rent: £1,800.00 pcm  
Approx. 6.9% Yield

## Viewings:

All viewings are by appointment only through our Beaufort Park Office.

Our reference: BEA250031

T: 020 8732 7980

E: [beaufortpark.sales@benhams.com](mailto:beaufortpark.sales@benhams.com)

W: [www.benhams.com](http://www.benhams.com)

Disclaimer: These particulars are for guidance purposes only and do not form part of an offer or contract. Whilst care has been taken in their preparation, Benham and Reeves or the vendor shall not be held responsible for any inaccuracies. You should not rely on statements by Benham and Reeves Ltd in the particulars or by word of mouth or in writing as being factually accurate about the property, its condition or its value. Any areas, measurements or distances are approximate. The text, photographs and plans are for guidance only. The photographs appearing in these particulars show only certain parts of the property at the time when the photographs were taken. It should not be assumed that the property has all or any of the necessary planning permission, building regulation consent approval or other required consents for its previous, present or future intended usage. Any intending purchasers must satisfy themselves by inspection or by taking appropriate professional advice. Benham and Reeves Ltd has not rested any of the equipment, fittings or facilities.

London | Canary Wharf | City | Colindale | Dartmouth Park | Ealing | Fulham | Hampstead  
Hammersmith | Highgate | Hyde Park | Kensington | Kew | Knightsbridge | Nine Elms  
Surrey Quays | Shoreditch | Wembley | Wapping | White City | Woolwich

International | China | Hong Kong | India | Israel | Malaysia | Middle East | Pakistan  
Singapore | South Africa | Turkey

