



Lismore Boulevard, Colindale Gardens, Colindale,

Asking Price: £390,000



Lismore Boulevard, Colindale Gardens, Colindale, NW9

 1 Bedroom (s)  1 Bathroom (s)  Leasehold

REF#: BEA240267

Immaculately presented throughout is this larger than average one bedroom apartment situated on the second floor of Maple House, Colindale Gardens. The property is built up of circa. 615 square feet and boasts a fully integrated kitchen with Siemens appliances, an open planned kitchen diner which leads out to the private balcony overlooking Lismore Boulevard. Further benefits include a double carpeted bedroom with built in wardrobes, a modern 3-piece family bathroom suite and underfloor heating throughout.

Colindale Gardens is a vibrant community in North West London, conveniently located just a short walk from the Northern Line tube station, with access to both the West End and the City. There's also an exciting range of amenities on site, including a gym and a 24 hour concierge. There are plans for a new primary school, local shops, cafés and restaurants. Residents enjoy an astonishing amount of green space, with a glorious four acre park, walkways and attractive landscaping. Colindale London Underground station is currently undergoing improvement, making getting around by public transport even more convenient. The underground is also now running through the night on Fridays and Saturdays.

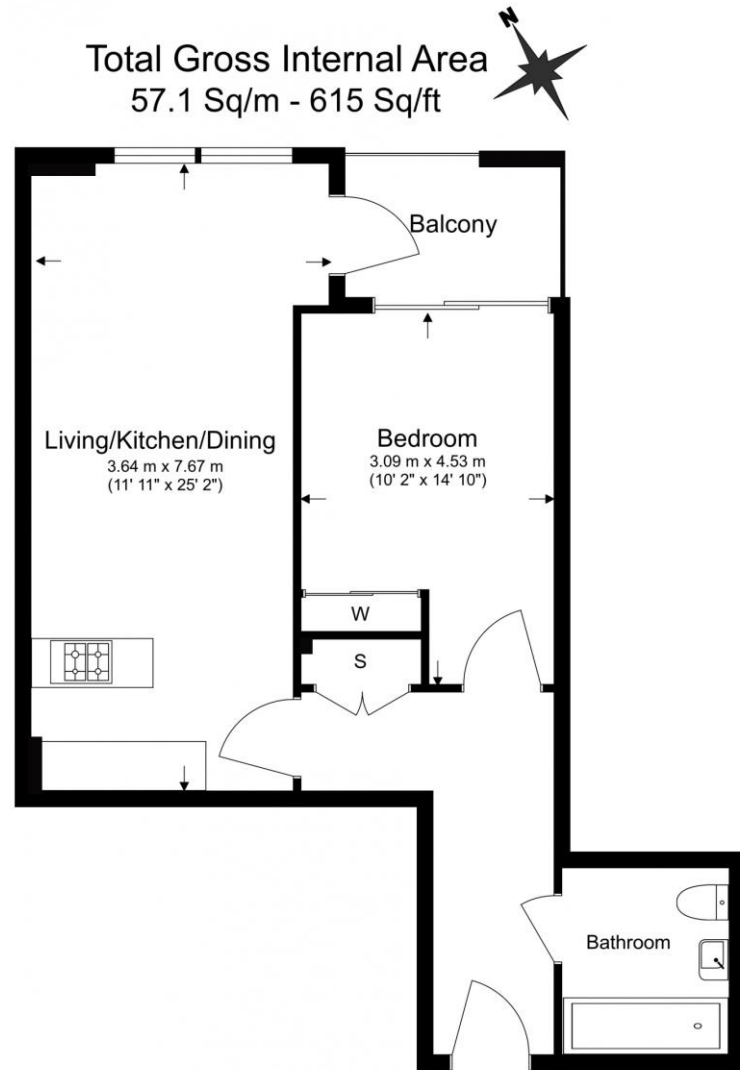


Lismore Boulevard, Colindale Gardens, Colindale, NW9



Property Features:

- Circa. 615 Square Feet
- One Bedroom Apartment
- Second Floor
- Private Balcony
- 24 Hour Concierge
- Residents Gym, Sauna & Steam Room
- Colindale Tube Station (Northern Line)
- 9 Acres Of Landscaped Green Space



Energy Efficiency Rating		
	Current	Potential
<i>Very energy efficient - lower running costs</i>		
(92+) A		
(81-91) B	84	84
(69-80) C		
(55-68) D		
(39-54) E		
(21-38) F		
(1-20) G		
<i>Not energy efficient - higher running costs</i>		
England, Scotland & Wales	EU Directive 2002/91/EC	



Floor Plan measurements are approximate and are for illustrative purposes only. While we do not doubt the floor plans accuracy, we make no guarantee, warranty or representation as to the accuracy and completeness of the floor plan.

Terms & Conditions:

These particulars are for guidance purposes only and do not form part of an offer or contract.

Asking Price:	£390,000
Tenure:	Leasehold Expires 31/12/3015 Approximately 991 Years Remaining
Ground Rent:	£200.00 (per annum) For the year of 2024
Service Charge:	£3,444.00 approx. (per annum) For the year of 2024
Anticipated Rent:	£1,800.00 pcm Approx. 5.5% Yield

Viewings:

All viewings are by appointment only through our Beaufort Park Office.

Our reference: BEA240267

T: 020 8732 7980

E: beaufortpark.sales@benhams.com

W: www.benhams.com

Disclaimer: These particulars are for guidance purposes only and do not form part of an offer or contract. Whilst care has been taken in their preparation, Benham and Reeves or the vendor shall not be held responsible for any inaccuracies. You should not rely on statements by Benham and Reeves Ltd in the particulars or by word of mouth or in writing as being factually accurate about the property, its condition or its value. Any areas, measurements or distances are approximate. The text, photographs and plans are for guidance only. The photographs appearing in these particulars show only certain parts of the property at the time when the photographs were taken. It should not be assumed that the property has all or any of the necessary planning permission, building regulation consent approval or other required consents for its previous, present or future intended usage. Any intending purchasers must satisfy themselves by inspection or by taking appropriate professional advice. Benham and Reeves Ltd has not rested any of the equipment, fittings or facilities.

London | Canary Wharf | City | Colindale | Dartmouth Park | Ealing | Fulham | Hampstead
Hammersmith | Highgate | Hyde Park | Kensington | Kew | Knightsbridge | Nine Elms
Surrey Quays | Shoreditch | Wembley | Wapping | White City | Woolwich

International | China | Hong Kong | India | Israel | Malaysia | Middle East | Pakistan
Singapore | South Africa | Turkey

