



Marsh Wall, Canary Wharf, E14

Offers over: £700,000

Benham & Reeves

Marsh Wall, Canary Wharf, E14

 1 Bedroom (s)  1 Bathroom (s)  Leasehold

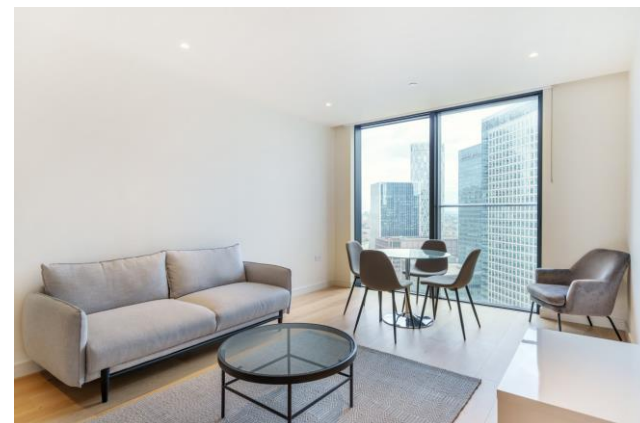
An amazing 1 bedroom apartment, spanning an impressive 653 square feet and located on the 30th floor of Hampton Tower. This prestigious residential building, completed in mid-2021, offers an exceptional opportunity to embrace contemporary living at its finest.

Step into the open-plan kitchen and living area, where style meets functionality. The modern kitchen boasts an array of Siemens appliances, ensuring that every culinary endeavour is a delight. Prepare to be captivated by the panoramic vistas of Canary Wharf, visible from the comfort of your living space. Floor-to-ceiling windows bathe the apartment in natural light while showcasing the everchanging beauty of the cityscape.

The bedroom is a haven of tranquillity, offering a spacious retreat where you can unwind and relax. The high-quality finishes and meticulous attention to detail create an ambiance of luxury and comfort.

Developed by the renowned Berkeley Homes, this property exudes sleek modernity and contemporary design. Every element of the apartment showcases the expertise and craftsmanship synonymous with Berkeley Homes' commitment to excellence.

South Quay Plaza is more than just a residence; it offers a lifestyle of indulgence and convenience. Residents benefit from an array of exceptional amenities, including a 24-hour concierge service, a state-of-the-art fitness centre, and beautifully landscaped communal areas.





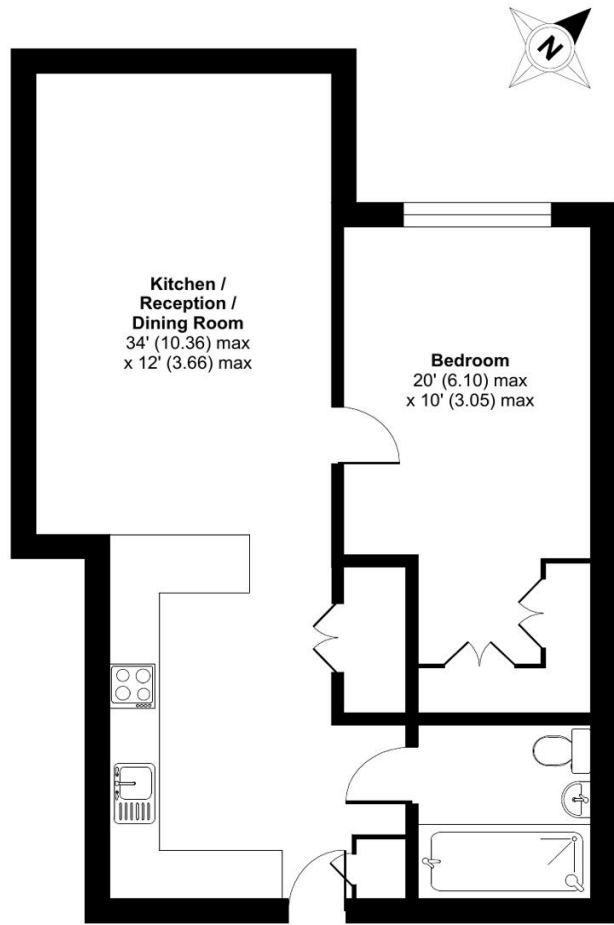
Property Features:

- One bedroom
- One bathroom
- 653 square feet
- 30th floor
- 24 hour concierge
- Open plan living space
- Modern interiors
- Rooftop business lounge



Hampton Tower, Marsh Wall, London, E14

Approximate Area = 653 sq ft / 60.6 sq m
 For identification only - Not to scale



THIRTIETH FLOOR

Energy Efficiency Rating		
	Current	Potential
<i>Very energy efficient - lower running costs</i>		
(92+) A		
(81-91) B	83	83
(69-80) C		
(55-68) D		
(39-54) E		
(21-38) F		
(1-20) G		
<i>Not energy efficient - higher running costs</i>		
England, Scotland & Wales	EU Directive 2002/91/EC	

Terms & Conditions:

These particulars are for guidance purposes only and do not form part of an offer or contract.

Offers over:	£700,000
Tenure:	Leasehold Expires 01/01/3015 Approximately 991 Years Remaining
Ground Rent:	£250 (per annum) 2023
Service Charge:	£5,115 approx. (per annum) 2023

Viewings:

All viewings are by appointment only through our Canary Wharf Office.

Our reference: CWH230260

T: 020 8036 3200

E: canarywharf.sales@benhams.com

W: www.benhams.com

Disclaimer: These particulars are for guidance purposes only and do not form part of an offer or contract. Whilst care has been taken in their preparation, Benham and Reeves or the vendor shall not be held responsible for any inaccuracies. You should not rely on statements by Benham and Reeves Ltd in the particulars or by word of mouth or in writing as being factually accurate about the property, its condition or its value. Any areas, measurements or distances are approximate. The text, photographs and plans are for guidance only. The photographs appearing in these particulars show only certain parts of the property at the time when the photographs were taken. It should not be assumed that the property has all or any of the necessary planning permission, building regulation consent approval or other required consents for its previous, present or future intended usage. Any intending purchasers must satisfy themselves by inspection or by taking appropriate professional advice. Benham and Reeves Ltd has not rested any of the equipment, fittings or facilities.

London | Canary Wharf | City | Colindale | Dartmouth Park | Ealing | Fulham | Hampstead
Hammersmith | Highgate | Hyde Park | Kensington | Kew | Knightsbridge | Nine Elms
Surrey Quays | Shoreditch | Wembley | Wapping | White City | Woolwich

International | China | Hong Kong | India | Israel | Malaysia | Middle East | Pakistan
Singapore | South Africa | Turkey

